

824-960 MHz 6 dBi LTE Fiberglass Omni Antenna with N Female Connector



- ❖ 6 dBi Fiberglass Omni Antenna is designed for applications operating in 824 - 960 MHz frequency including radio frequency identification (RFID), cellular systems, global system for mobile (GSM) communications, code-division multiple access (CDMA) systems, point-to-multipoint communications and wireless video links.
- ❖ It features high gain and is vertically polarized
- ❖ Includes a heavy-duty mounting bracket and an N female connector.

Color Option	Product SKU	Ventev Part #
Black	239752	T09060010006B
White	392017	M3070090D20607

Electrical Specifications

Frequency Bands, MHz	824-960
Polarization	Vertical
Horizontal Beamwidth	360°
Vertical Beamwidth	30°
Gain, dBi	6
VSWR	1.5
Max Input Power per Port, watts	50
Impedance, ohm	50

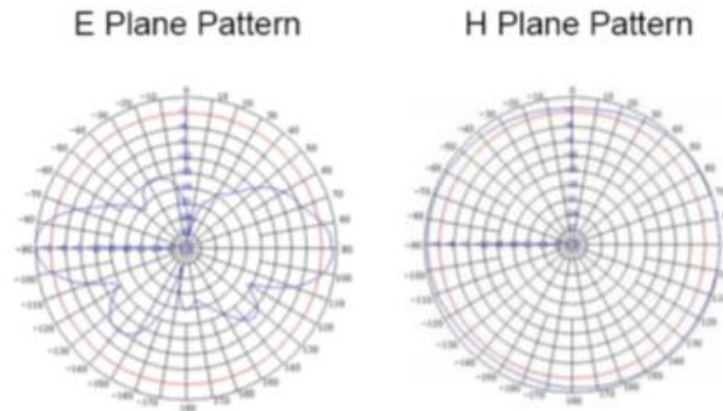
Mechanical Specifications

Product Dims	22.05 x 1.42 in
Input Connector	N Female
Radome	White or Black Fiberglass
Mounting	Mast Mount (Hardware Included)
Operating Temperature	-40 °C to +60 °C (-40 °F to +140 °F)
Relative Humidity	Up to 95%
Product Weight	1.45Kg (3.25 lbs) w/o bracket



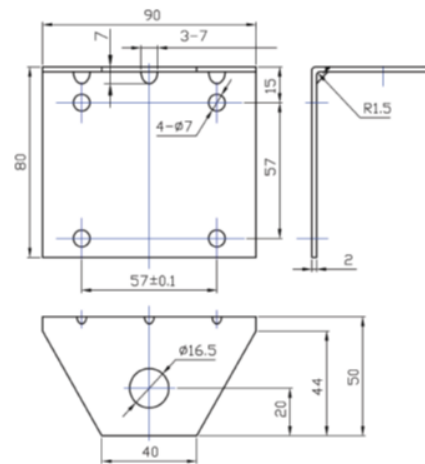
824-960 MHz 6 dBi LTE Fiberglass Omni Antenna with N Female Connector

Radiation Patterns



Mount Information

Antenna Horizontal Mounting Bracket Drawing



Measurements are in millimeters