

# 5GHz 18.5dBi Wi-Fi Directional Antenna with 4 N-Female Connectors



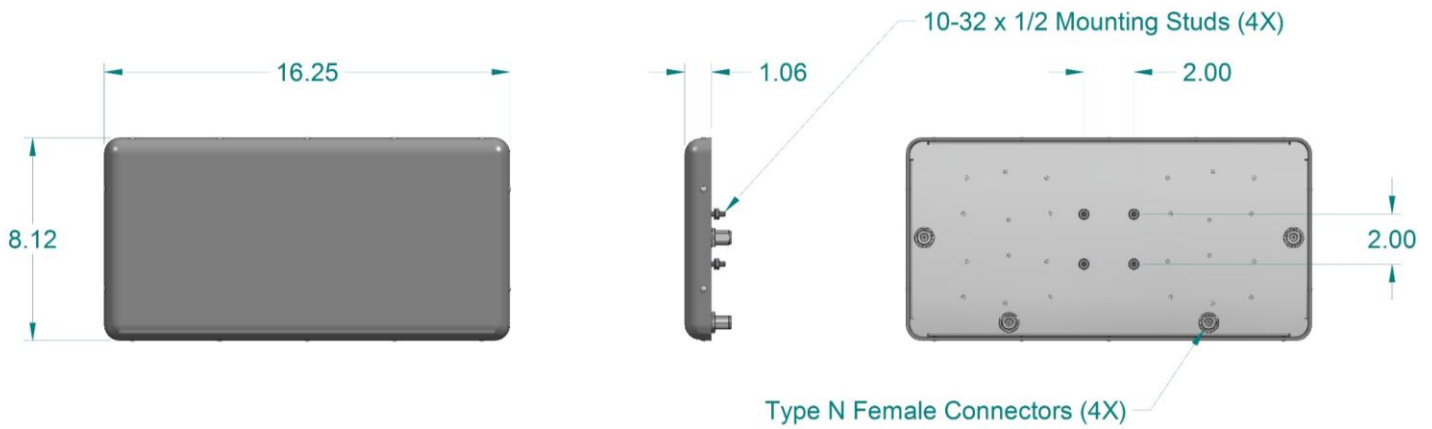
Ventev's 5GHz 18.5dBi Wi-Fi Directional Antenna can connect to any manufacturer's 802.11ac Waves I & II WLAN access points. The antenna provides the very high gain and very narrow beamwidths that are required to support ultra-high-capacity wireless networks. Cross polarization ensures excellent performance in high scatter environment. The antenna's rear plate has 4 studs for a variety of antenna mounting options (sold separately). Optional Ventev mounts include Industrial Articulating. *Every Ventev antenna is covered by the company's two-year TerraNet warranty program.*

**For more information or to purchase, contact Ventev:** 800.851.4965 or [sales@ventev.com](mailto:sales@ventev.com).

Antenna Specifications	
SKU	242441
Model Number	T58185D0006
Required Frequency Ranges	5 GHz
Average Gain	18.5 dBi
Horizontal Beamwidth	16 degrees
Vertical Beamwidth	16 degrees
Impedance	50 Ohms
VSWR	2:1
Polarization	4 Ports, 2 Vertical, 2 Horizontal
Front-to-Back Ratio	22 dB
Operating Temperature (F)	-40° to 140°
Max Power Rating	50 Watts
Connector Number & Type	4 N Jacks
Mechanical Specifications	
Dimensions (Inches)	16.25 x 8.12 x 1.06
Weight (Pounds)	3
Radome Material	ABS
Radome Color	Gray
Mount Method	Four 10-32 x 1/2 studs on 2.0" x 2.0" pattern on rear of antenna. Antenna mount sold separately.
Intrusion Prevention	IP-54 compliant

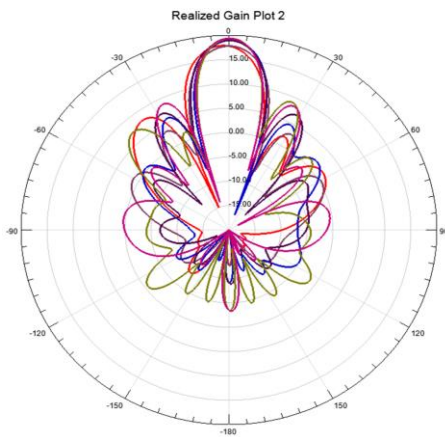
# 5GHz 18.5dBi Wi-Fi Directional Antenna with 4 N-Female Connectors

## Antenna Dimensions



## Radiation Patterns

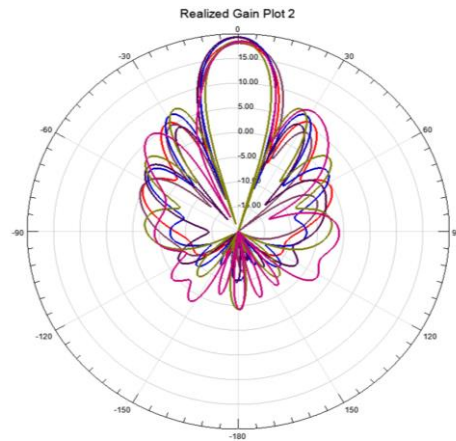
Port 1



HFSSDesign1 ▲

Curve Info	xdb10Beamwidth(3)	max
dB(RealizedGainTotal) Setup 1 : Sweep 1 Freq=4.9GHz' Phi=0deg'	18.7739	17.9160
dB(RealizedGainTotal) Setup 1 : Sweep 1 Freq=4.9GHz' Phi=90deg'	18.8867	17.7945
dB(RealizedGainTotal) Setup 1 : Sweep 1 Freq=5.4GHz' Phi=0deg'	16.5614	18.9725
dB(RealizedGainTotal) Setup 1 : Sweep 1 Freq=5.4GHz' Phi=90deg'	17.2320	18.9688
dB(RealizedGainTotal) Setup 1 : Sweep 1 Freq=5.9GHz' Phi=0deg'	14.6191	19.3465
dB(RealizedGainTotal) Setup 1 : Sweep 1 Freq=5.9GHz' Phi=90deg'	15.2317	19.3465

Port 2



HFSSDesign1 ▲

Curve Info	xdb10Beamwidth(3)	max
dB(RealizedGainTotal) Setup 1 : Sweep 1 Freq=4.9GHz' Phi=0deg'	18.8054	18.1466
dB(RealizedGainTotal) Setup 1 : Sweep 1 Freq=4.9GHz' Phi=90deg'	18.9698	18.1918
dB(RealizedGainTotal) Setup 1 : Sweep 1 Freq=5.4GHz' Phi=0deg'	16.8721	19.2932
dB(RealizedGainTotal) Setup 1 : Sweep 1 Freq=5.4GHz' Phi=90deg'	17.2154	19.3031
dB(RealizedGainTotal) Setup 1 : Sweep 1 Freq=5.9GHz' Phi=0deg'	15.2169	18.4763
dB(RealizedGainTotal) Setup 1 : Sweep 1 Freq=5.9GHz' Phi=90deg'	16.1651	18.5278