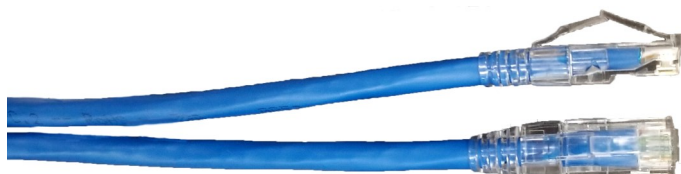


Category 6A Patch Cable

For questions or to purchase product, contact Ventev: 800-851-4965 or sales @ventev.com.



LENGTH	SKU	VENTEV PN
1ft	214760	VEN-C6APCH1FTBL
3ft	254837	VEN-CA6PCH3FTBL
5ft	210777	VEN-CA6PCH5FTBL
7ft	203827	VEN-C6APCH7FTBL
15ft	203671	VEN-C6APCH15FTBLUE
25ft	243693	VEN-C6APCH25FTBL

PHYSICAL CHARACTERISTICS	
Conductor:	26 AWG 7/34 Stranded Tinned Copper
Insulation Material:	Polyolefin, 0.009" Nom Wall Thickness
Outer Jacket Material:	Polyvinylchloride, 0.024" Nom Wall Thickness
Shield:	Aluminized Polyester Foil Shield (Foil In, 100% coverage) with 26 AWG7/34 Stranded Tinned Copper Drain Wire In Contact With
Overall Diameter:	0.235" Nom 0.242" Max

MECHANICAL CHARACTERISTICS	
Plug/Jack Termination:	RJ45 Specially For Stranded Conductors, Shielded or Unshielded
Storage temp range:	-20°C to +60°C and +75°C
Operating temp range:	-20°C to +60°C and +75°C
Max pull tension:	25N
Min bend radius:	1.0" Static

SUITABILITY / ENVIRONMENT	
Indoor:	Yes

APPLICABLE SPECIFICATIONS AND AGENCY COMPLIANCE	
RoHS:	Yes
Telecommunications Standards:	NEC (UL) Type CMR/CMG, CEC C(UL) Type CMR/CMG, Cat6a TIA-568-C.2

PERFORMANCE TABLE	
Insertion Loss at various frequencies:	
1 - 10 MHz	20 + 5 LOG (f) dB MIN
Return Loss at various frequencies:	
10 - 20 MHz	25 dB MIN