

## 12" x 10" x 5" Dual Line PoE Heated Wi-Fi Enclosure Solution for Wi-Fi Access Points

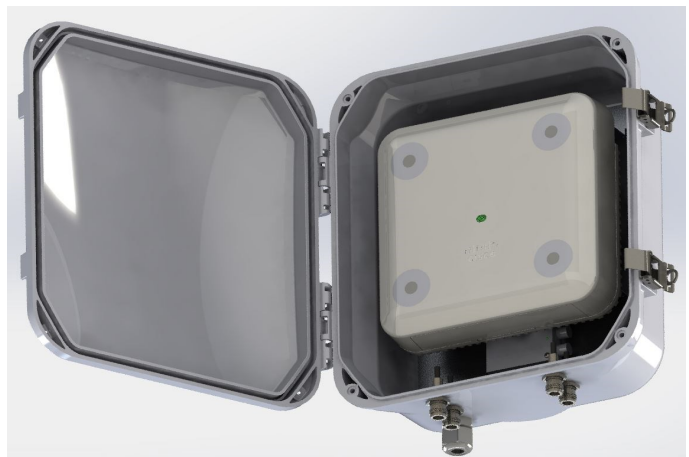
Ventev's PoE Powered Heated Enclosure System is a plug-and-play solution engineered to enable the use of indoor APs in freezer storage applications. Housed in a 12"x10"x5" Sleek NEMA 4X enclosure, this compact system includes a controlled heating element that keeps ambient temperature of the enclosure within manufacturer specified operating temperature. This system can utilize an Omni antenna or an external Patch antenna, mounted separately. Two separate PoE lines are required to power this system (One for the AP, a second to power the Heating System). *Every Ventev enclosure is covered by the company's two-year TerraNet warranty program. For questions or to purchase product, contact a Regional Sales Executive at 410-229-1201, 800-851-4965 or sales@ventev.com.*



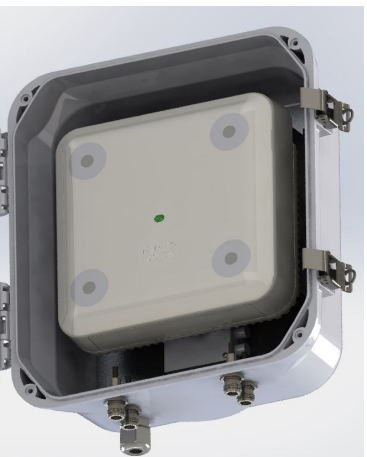
Clear Door w/ RPSMA Connector  
Tessco No. 249320  
Part #VNV-CB-RPS-C-2AC



Clear Door w/ RPTNC Connector  
Tessco No. 207760  
Part #VNV-CB-RPT-C-2AC



Solid Door w/ RPSMA Connector  
Tessco No. 296548  
Part #VNV-CB-RPS-O-2AC



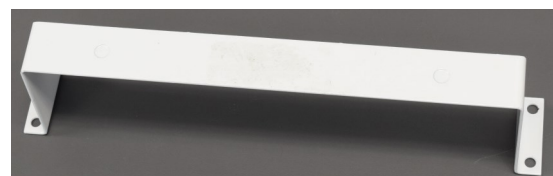
Solid Door w/ RPTNC Connector  
Tessco No. 228355  
Part #VNV-CB-RPT-O-2AC

### Configuration Options

- Clear & Solid Door
- Integrated Omni Antenna
  - RPTNC Connectors
  - RPSMA Connectors

### Available Accessories

- Wall & Pole Mount Kits
- Jumpers
- NEMA plug
- T-Bar Mount - (Pictured to the right)



T-Bar Mounting Plate  
SKU #515906

### Features

- Compatible with the many 802.3at Powered Access Points
- Compact, durable, weatherproof, NEMA 4X-rated enclosure, constructed of a high-quality polycarbonate plastic that is UV resistant, corrosion-resistant and sustainable in broad temperature ranges
- Innovative heating system, powered by PoE line (Second Line required to power AP)

### Benefits

- Extend Wi-Fi into a cold storage application, reducing installation time and deployment costs
- Protect the AP from theft, tampering and impact with a secure, durable Polycarbonate enclosure
- Protect the AP from harsh environmental elements (cold, external formation of ice, dust, splashing water and hose directed water) with a NEMA-4X rated enclosure
- Eliminate the need for costly AC power deployment
- Ensure **aesthetically pleasing** appearance with a compact fully-integrated solution



## 12" x 10" x 5" Dual Line PoE Heated Wi-Fi Enclosure Solution for Wi-Fi Access Points

### PoE Heated Enclosure Specifications

|                                  |  |
|----------------------------------|--|
| <b>Dimensions (W x L x H)</b>    | 12" x 10" x 5"                                     |
| <b>Enclosure Material</b>        | Polycarbonate                                      |
| <b>Color</b>                     | Grey   |
| <b>NEMA Rating</b>               | 4X   |
| <b>Environmental Temp Range</b>  | -40°F to 86°F (-40°C to 30°C)                      |
| <b>Heating</b>                   | 12 VDC   |
|                                  | Heater on constantly with applied power            |
| <b>Input Power</b>               | Two 25.5W PoE Lines: one for AP and one for heater |
| <b>AP Minimum Operating Temp</b> | Greater than or equal to -32°F (0°C)               |
| <b>Weight</b>                    | 10 lbs   |

### Dual Line PoE Heated Enclosures SKU Numbers

|               | Solid Door w/ RPSMA Connector | Clear Door w/ RPSMA Connector | Solid Door w/ RPTNC Connector | Clear Door w/ RPTNC Connector |
|---------------|-------------------------------|-------------------------------|-------------------------------|-------------------------------|
| <b>SKU #</b>  | 296548                        | 249320                        | 228355                        | 207760                        |
| <b>Part #</b> | VNV-CB-RPS-O-2AC              | VNV-CB-RPS-C-2AC              | VNV-CB-RPT-O-2AC              | VNV-CB-RPT-C-2AC              |