



EASE
EQUIPMENT ANCHORAGE & SEISMIC ENGINEERING

2801 Connery Way Suite B

Missoula, MT 59808

Phn: (406) 541-3273 Fax: (406) 541-3274

Sheet 1 of 3

Office of Statewide Health Planning and Development
ANCHORAGE PRE-APPROVAL

OPA-2607-07

Equipment Manufacturer: Terrawave Solutions

Equipment Type: 24x24 Ceiling Enclosure

GENERAL NOTES

1. FORCES PER ASCE 7-05 SECTION 13.3.1, EQUATIONS 13.3-1, 13.3-2 & 13.3-3, WHERE $S_{DS} = 2.00$, $a_p = 2.5$, $I_p = 1.5$ & $R_p = 2.5$
2. THIS PRE-APPROVAL CONFORMS TO THE 2010 CALIFORNIA BUILDING CODE AND COVERS THE ANCHORAGE OF THE UNIT ONLY.
3. THE DETAILS IN THIS PRE-APPROVAL MAY BE USED AT ANY LOCATION IN THE STATE OF CALIFORNIA.
THE ELEVATED FLOOR DETAILS MAY BE USED AT ANY HEIGHT IN A BUILDING.
4. ALL ANCHOR FORCES SHOWN ON THE DRAWINGS ARE STRENGTH LEVEL LOADS AND MAY BE USED FOR STRENGTH DESIGN.
5. THIS PRE-APPROVAL COVERS THE ANCHORAGE OF THE UNIT ONLY.

RESPONSIBILITIES OF THE STRUCTURAL ENGINEER OF RECORD

6. DESIGN BACKING BARS, STUDS, ETC. WHICH THE UNITS ARE ATTACHED TO AS NOTED ON THE DRAWINGS.
THE SEOR SHALL ALSO VERIFY THE ADEQUACY OF THE STRUCTURES (SUCH AS WALLS AND FLOORS)
WHICH SUPPORT THE UNITS FOR THE LOADS IMPOSED ON THEM BY THE UNITS AS WELL AS ALL OTHER LOADS.
7. PROVIDE ANY SUPPORTING STRUCTURE REQUIRED TO SUPPORT WEIGHTS AND FORCES SHOWN, IN ADDITION TO ALL OTHER LOADS.
8. VERIFY THAT THE INSTALLATION IS IN CONFORMANCE WITH THE 2010 CBC AND WITH THE DETAILS SHOWN IN THIS PRE-APPROVAL.
VERIFY THAT THE ACTUAL EQUIPMENT'S WEIGHT, CG LOCATION, ANCHOR LOCATIONS, ANCHOR DETAILS AND THE MATERIAL AND GAGE OF THE UNIT WHERE ATTACHMENTS ARE MADE AGREE WITH THE INFORMATION SHOWN ON THE PRE-APPROVAL DOCUMENTS.



A P P R O V E D	
Fixed Equipment Anchorage	
Office of Statewide Health Planning and Development	
	OPA-2607-10
Pre-approval Program Manager: Anthony R. Pike (916) 440-8470	
P E N D I N G	
Reviewed By: Anthony R. Pike	9/21/10

TERRAWAVE SOLUTIONS

24 x 24 CEILING ENCLOSURE

DES. J. ROBERSON

JOB 11-1059

DATE 9/21/10

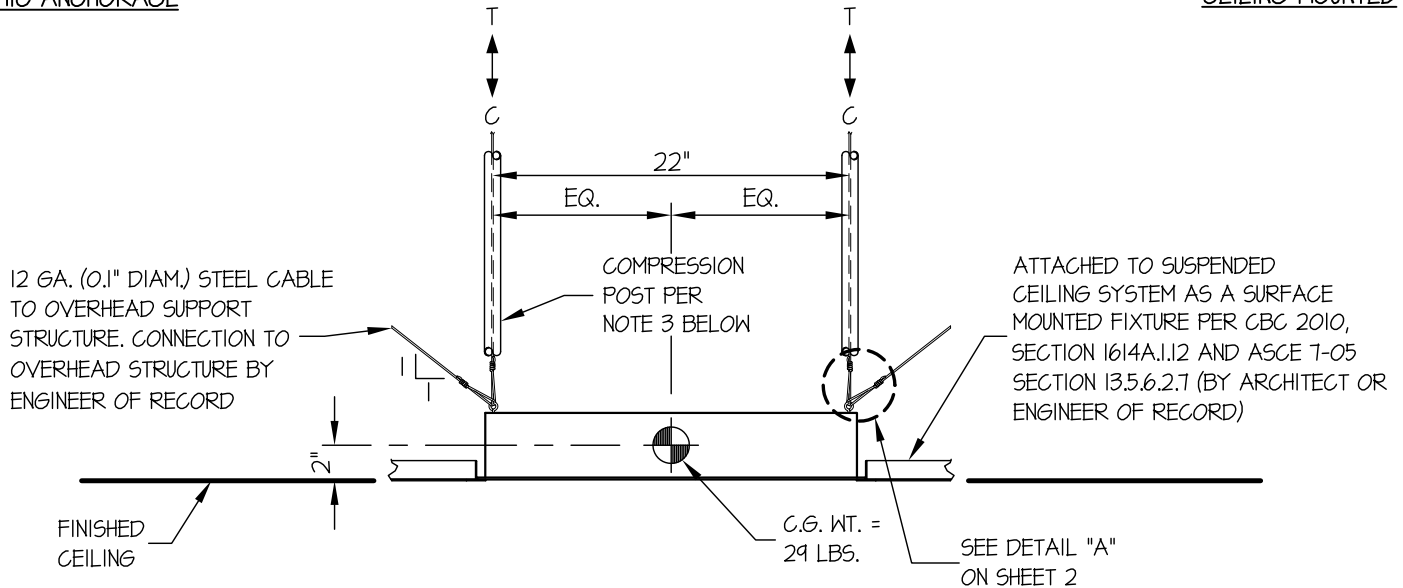
SHEET

2

OF 3 SHEETS

SEISMIC ANCHORAGE

CEILING MOUNTED



FRONT ELEVATION

T_{MAX} = 64 LBS/CABLE

NOTES:

- ANCHORAGE DESIGN PER 2010 CALIFORNIA BUILDING CODE - SECTION 1613A AND ASCE 7-05 SECTIONS 12 AND 13. STRENGTH DESIGN IS USED.
HORIZONTAL FORCE (E_h) = $3.60 W_p$ ($S_{DS} = 2.00$, $a_p = 2.5$, $I_p = 1.5$, $R_p = 2.5$)
VERTICAL FORCE (E_v) = $0.40 W_p$
- CENTER OF GRAVITY (C.G.) WEIGHT IS A MAXIMUM. THIS PRE-APPROVAL ENCOMPASSES ALL WEIGHTS UP TO THE MAXIMUM WEIGHT SHOWN.
- ENGINEER OF RECORD FOR THE BUILDING SHALL PROVIDE SUPPORT STRUCTURE DESIGNED TO SUPPORT WEIGHTS AND FORCES SHOWN, IN ADDITION TO ALL OTHER LOADS.
- SEE GENERAL NOTES: SHEET 1



TERRAWAVE SOLUTIONS

24 x 24 CEILING ENCLOSURE

DES. J. ROBERSON

JOB 11-1059

DATE 9/21/10

SHEET

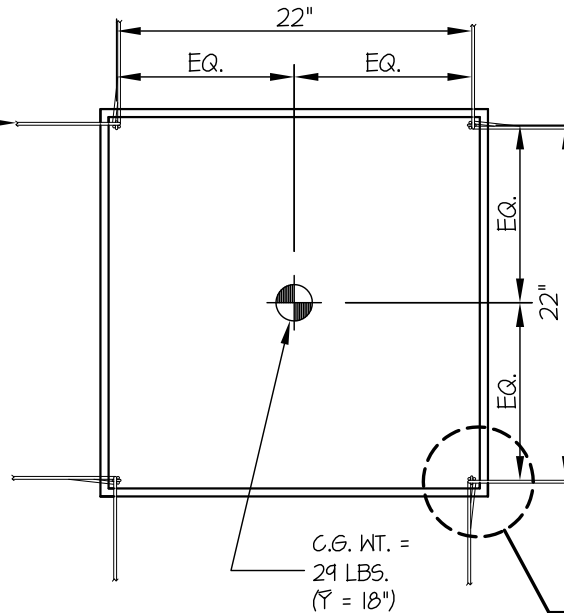
3

OF **3** SHEETS

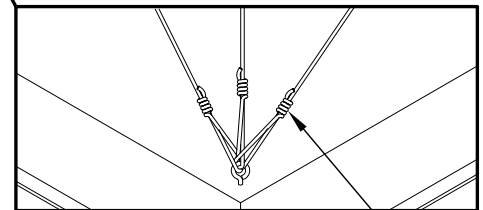
SEISMIC ANCHORAGE

CEILING MOUNTED

12 GA. (0.1" DIAM.) STEEL CABLE
TO OVERHEAD SUPPORT
STRUCTURE. CONNECTION TO
OVERHEAD STRUCTURE BY
ENGINEER OF RECORD



PLAN AT BASE



NOTE: PROVIDE 4 TIGHT
TURNS AT WIRE CONNECTION (TYP.)

DETAIL "A"



A P P R O V E D

Fixed Equipment Anchorage
Office of Statewide Health Planning and Development



OPA-2607-10

Pre-approval Program Manager:
Anthony R. Pike
(916) 440-8470

P E N D I N G

Reviewed By: Anthony R. Pike

9/21/10