

3G/4G LTE Mobile Outdoor Omni Antenna 698-2170 MHz, 1x N Female Lead



- ❖ Omnidirectional Antenna with 698-2170 MHz Frequency
- ❖ Ideal for 3G/4G outdoor deployments
- ❖ A rugged exterior makes this antenna ideal to support demanding outdoor cellular applications
- ❖ Feature 2/4 dBi with an included N Female connector

For more information or to purchase, contact Ventev:
800.851.4965 or sales@ventev.com

Connector	Product SKU	Ventev Part #
N Female	276078	M3020040011206

Electrical Specifications		
Frequency Bands, MHz	698-960	1710-2170
Polarization	Vertical	
Horizontal Beamwidth	360°	
Vertical Beamwidth	85°	
Gain, dBi	2	4
VSWR	≤2.5	≤2.5
Max Input Power per Port, watts	50	
Impedance, ohm	50	

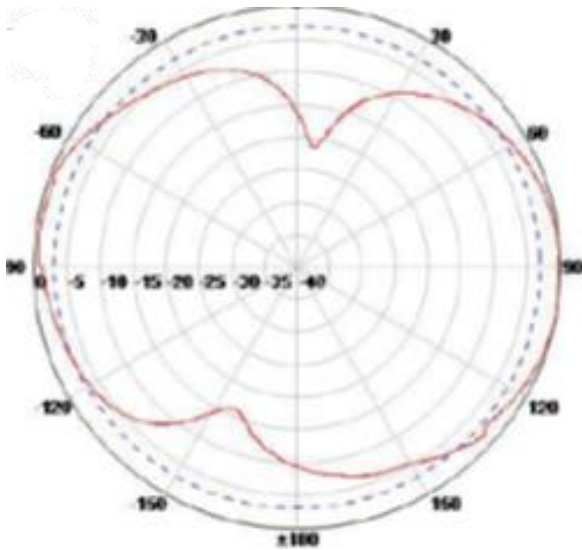
Mechanical Specifications	
Product Dims	Ø0.75" x 12.76" High
Input Connector	12" Pigtail with N-type Female connector
Radome	White
Mounting	Mast or Pole
Ingress Protection	IP55
Operating Temperature	-40 °C to +60 °C (-40 °F to +140 °F)
Product Weight	0.72 lb

Every Ventev antenna is RoHS compliant and covered by company's 2-year warranty program.

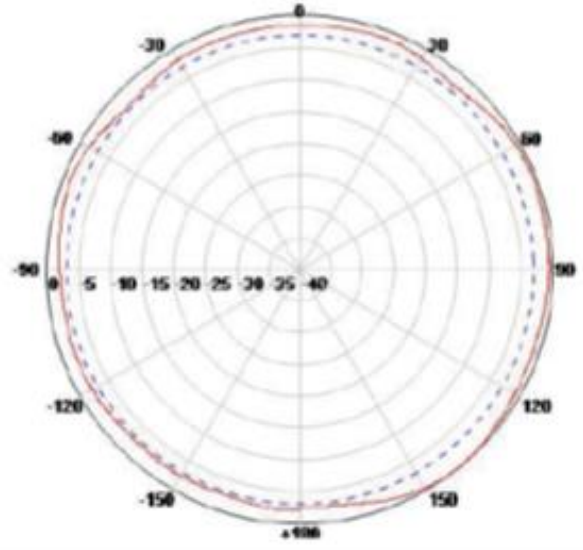
3G/4G LTE Mobile Outdoor Omni Antenna 698-2170 MHz, 1x N-Female Lead

Radiation Patterns

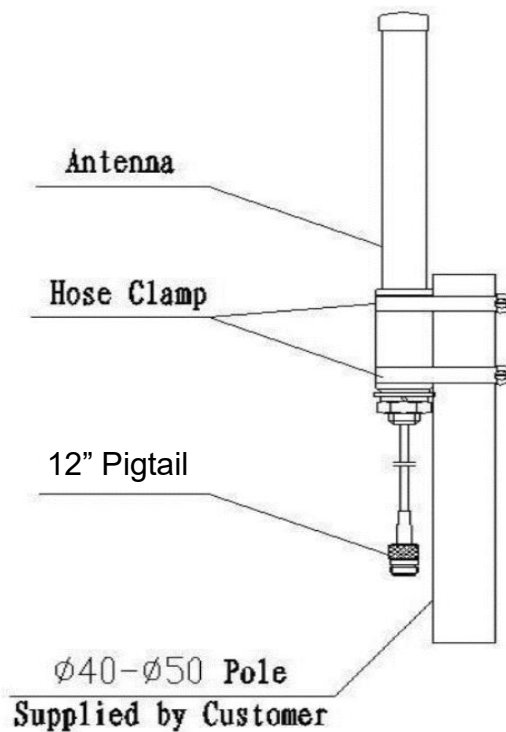
E Plane



H Plane



Installation Diagram



Every Ventev antenna is RoHS compliant and covered by company's 2-year warranty program.