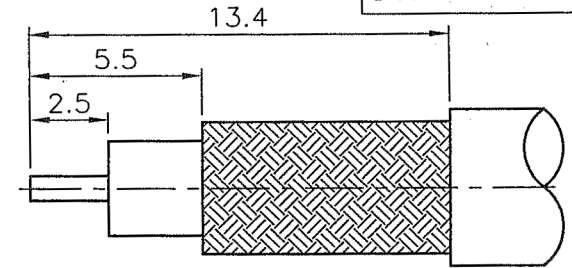
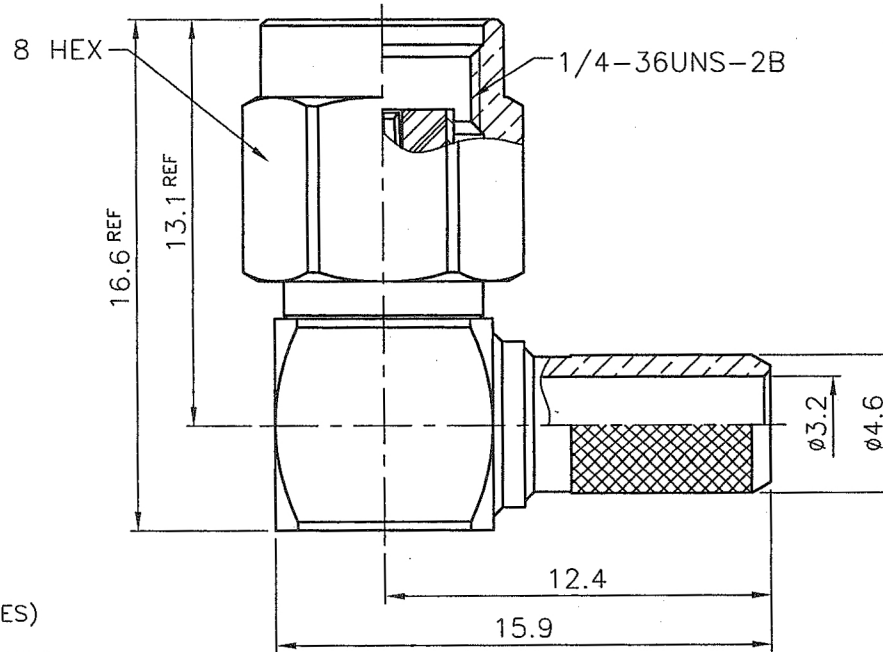
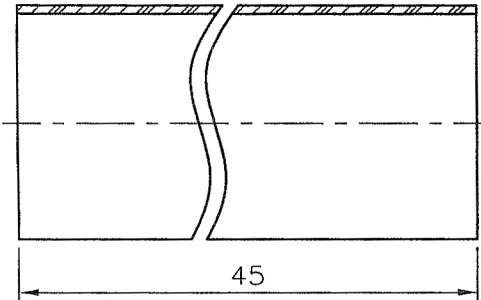
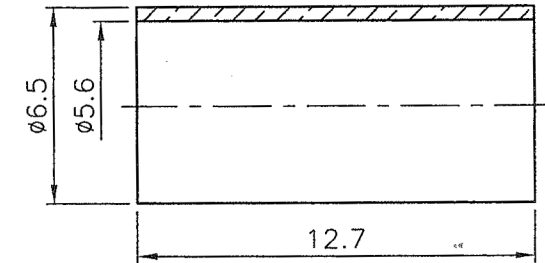


REVISIONS		
ISS	SYMBOL	DESCRIPTION\DATE
A2		

FOR CUSTOMER

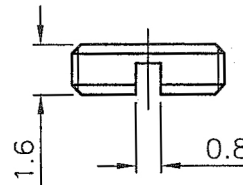


RECOMMENDED  
CABLE STRIPPING DIM'S



NOTES: FINISH (PLATING THICKNESS IN MICRO-INCHES)

1. BRASS PER QQ-B-626
2. NICKEL PL 70 MIN THICK OVER COPPER STRIKE
3. GOLD PL 30 MIN OVER NICKEL PL 70 MIN THICK OVER COPPER STRIKE
4. TEFLON MIL-P-19468
5. BERYLLIUM COPPER PER QQ-C-530
6. BRASS JIS H 3250, C 2700
7. PASSIVATED



1. CRIMPED FERRULE  
HEX CRIMP SIZE .213" (5.41mm)

2. CONTACT PIN TO SOLDER

RoHS COMPLIANT

NO.	DESCRIPTION	MATERIAL	FINISH	Q'TY	DRAWING NO.
	HEAT SHRINK TUBE		BLACK		
	FERRULE	NOTE 6	NOTE 2		
	COVER	NOTE 1	NOTE 2		
	SHELL	NOTE 1	NOTE 2		
	GASKET	SILICONE	RED		
	C RING	SUS 304	NOTE 7		
	CUBE BODY	NOTE 1	NOTE 2		
	CONTACT PIN	NOTE 5	NOTE 3		
	INSULATOR	NOTE 4	WHITE		
	BODY	NOTE 1	NOTE 2		

DIMENSIONS ARE IN MILLIMETERS  
UNLESS OTHERWISE SPECIFIED TOLERANCES

0.5~6	= ±0.2
>6~30	= ±0.4
>30~120	= ±0.6
>120~315	= ±1
>315~1000	= ±1.6
ANGLES	= ±5°

PART NO. CON-20-195-RA	
APPROVED	DATE
CHECKED	DATE
DRAWN	DATE

TITLE SMA R/P R/A CRIMP PLUG (FOR RG-58/U,58C/U,LMR-195)	
DRAWING NO.	
FILE NO. Z:\NND\2811\NR\501\002\2811NR501BF002B-A2	