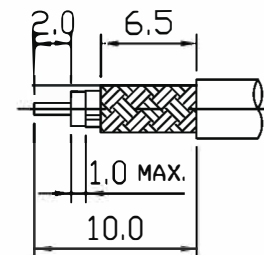
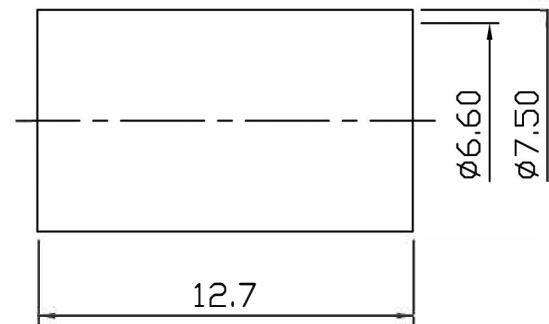
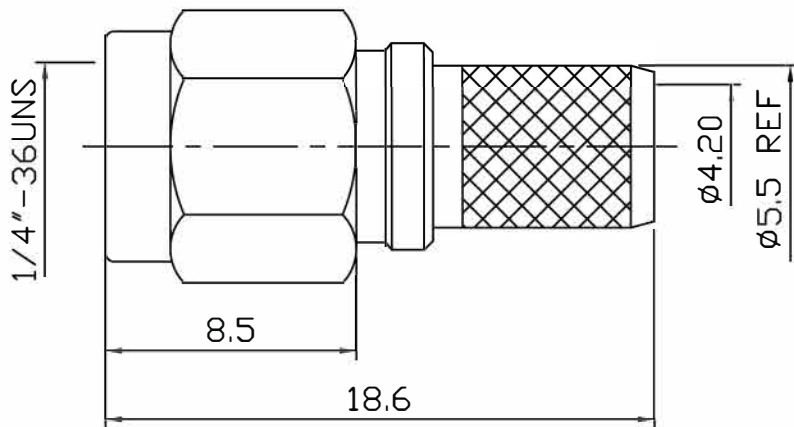


REVISION

ISS	ZONE	DESCRIPTION



STRIPPING DIMENSION

- NOTE:
- 1.Impedance: 50Ω
 - 2.Frequency Range: DC 0-18 GHz
 - 3.V.S.W.R: 1.3 MAX. @ 6GHz
 - 4.Voltage Rating: 500V rms
 - 5.Contact Resistance: Center Contacts: 2.0 mΩ Max
Outer Contacts: 2.0 mΩ Max
 - 6.Insulation Resistance: 5000 MΩ MIN.
 - 7.Interface in Accordance With: MIL-STD-348A
 - 8.Operating Temperature Range: -65°~165°C
 - 9.ROHS Compliance.

NO.	DESCRIPTION	MATERIAL	FINISH	Q'TY	DRAWN NO.
7	FERRULE	BRASS	GOLD	1	M-0067
6	CENTER CONTACT	Be Cu	GOLD	1	10002022B
5	BODY	BRASS	GOLD	1	9912037B
4	WASHER	STEEL	NONE	1	G-0002
3	GASKET	SILICONE	NONE	1	R-0001
2	INSULATOR	TEFLON	NONE	1	9912037C
1	SHELL	BRASS	GOLD	1	A-0002

TOLERANCES			
DIMENSIONS ARE IN MILLIMETER			
UNLESS OTHERWISE SPECIFIED			
.X	±0.2		
.XX	±0.1		
.XXX	±0.05		
ANGLES	±5°		
SCALE	4/1	ISSUE	A-0

TITLE
SMA Plug Connector for TWS-240 Captivated Center Pin
PART NO. CON-18-240-CP
DRAWN NO.
FILE PATH:

VENTEV	
APPROVED	DATE
CHECKED	DATE
DRAWN	DATE