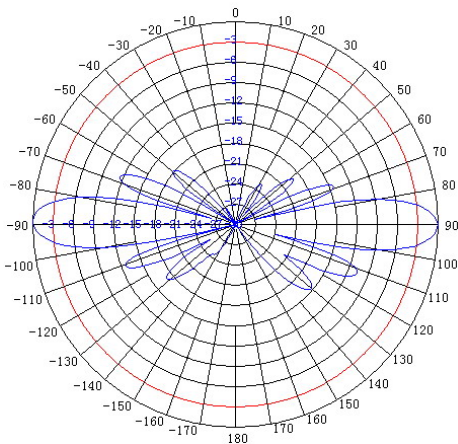
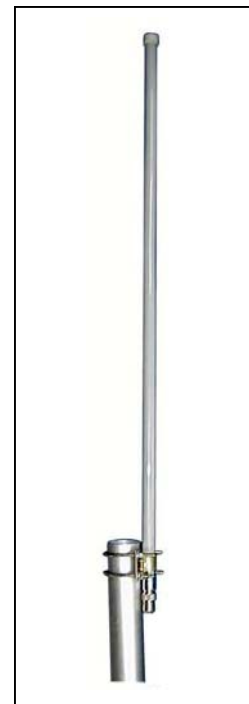


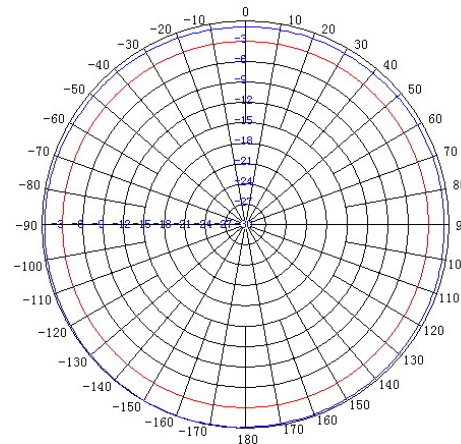
**TerraWave Solutions® PERFORMANCE SERIES**  
**2.4 GHz 9 dBi Gray Fiberglass Omni Antenna with Side Mount and N-Style Jack Connector**

TerraWave’s 9 dBi gray fiberglass omnidirectional antenna is designed for indoor and outdoor 2.4 GHz wireless local area networks. It features UV stable, vented radome that provides ultimate sustainability against extreme weather conditions such as high temperature, strong winds and rain. Includes a sturdy side mount for convenient mast or wall mounting. Every TerraWave antenna is covered by the company’s two year TerraNet warranty program. Visit [www.terrawave.com](http://www.terrawave.com) for additional information.

| Specifications              |                 |
|-----------------------------|-----------------|
| Model                       | T24090O10006SG  |
| Frequency Range             | 2400 ~ 2483 MHz |
| Bandwidth                   | 83 MHz          |
| Gain                        | 9 dBi           |
| Horizontal Beamwidth        | 360°            |
| Vertical Beamwidth          | 13°             |
| VSWR                        | ≤ 1.5           |
| Nominal Impedance           | 50 Ohms         |
| Maximum Power Rating        | 100 Watts       |
| Polarization                | Vertical        |
| Connector                   | N-Style Jack    |
| Length                      | 30.7”           |
| Wind Load                   | 120 mph         |
| Radome                      | Gray Fiberglass |
| Mast Mount Diameter         | Ø1.5” ~ Ø2.0”   |
| Operating Temperature Range | -22°F ~ 158°F   |



E-Plane



H-Plane

TerraWave Solutions® *PERFORMANCE SERIES*  
2.4 GHz 9 dBi Gray Fiberglass Omni Antenna with Side Mount and N-Style Jack Connector

Mounting Bracket Information for T24090O10006SG

