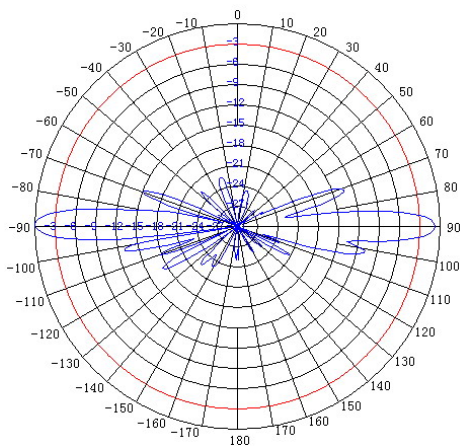
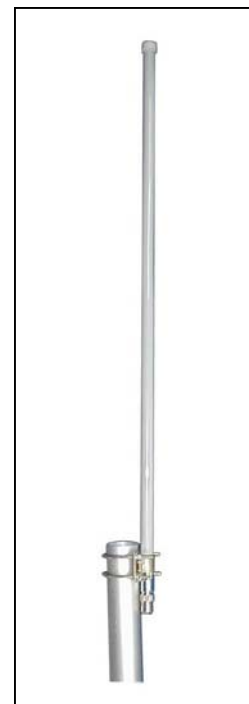


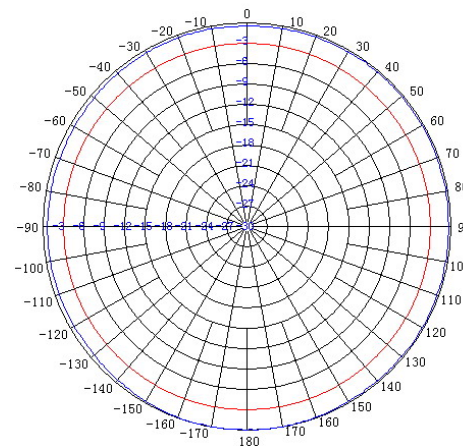
**TerraWave Solutions® PERFORMANCE SERIES**  
**2.4 GHz 12 dBi Fiberglass Omni Antenna with Side Mount and N-Style Jack Connector**

TerraWave’s 12 dBi fiberglass omnidirectional antenna is designed for indoor and outdoor 2.4 GHz wireless local area networks. It features UV stable, vented radome that provides ultimate sustainability against extreme weather conditions such as high temperature, strong winds and rain. Includes a sturdy side mount for convenient mast or wall mounting. Every TerraWave antenna is covered by the company’s two year TerraNet warranty program. Visit [www.terrawave.com](http://www.terrawave.com) for additional information.

Specifications	
Model	T24120O10006S
Frequency Range	2400 ~ 2483 MHz
Bandwidth	83 MHz
Gain	12 dBi
Horizontal Beamwidth	360°
Vertical Beamwidth	7°
VSWR	≤ 1.5
Nominal Impedance	50 Ohms
Maximum Power Rating	100 Watts
Polarization	Vertical
Connector	N-Style Jack
Length	47.2”
Wind Load	120 mph
Radome	White Fiberglass
Mast Mount Diameter	Ø1.5” ~ Ø2.0”
Operating Temperature Range	-22°F ~ 158°F



E-Plane



H-Plane

TerraWave Solutions® **PERFORMANCE SERIES**  
2.4 GHz 12 dBi Fiberglass Omni Antenna with Side Mount and N-Style Jack Connector

**Mounting Bracket Information for T24120O10006S**

