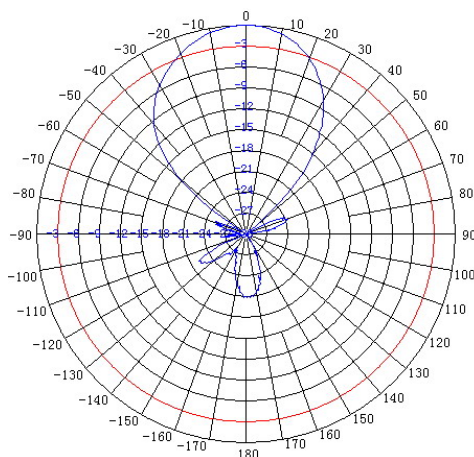
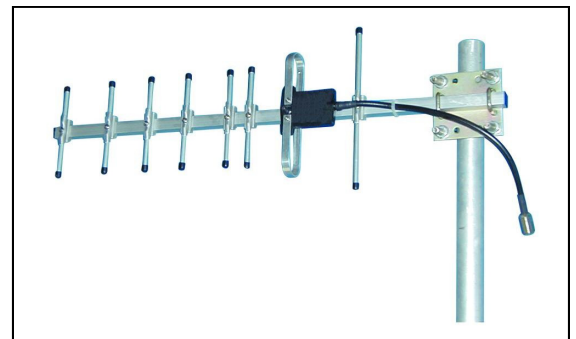




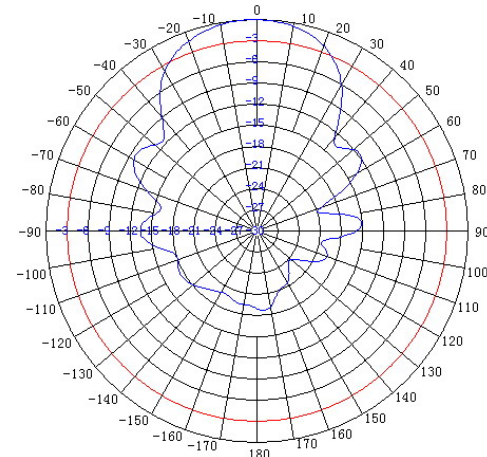
TerraWave Solutions® 900 MHz 11 dBi Yagi Antenna with N-Style Jack Connector

TerraWave's 11 dBi directional yagi antenna is designed for applications in the 900 MHz frequency, including, radio frequency identification (RFID) applications, cellular systems, global system for mobile (GSM) communications, code-division multiple access systems (CDMA) applications, multipoint applications and wireless video links. It features a high gain and can be mounted in a horizontal or vertical polarization. Includes heavy-duty steel mounting brackets and an N-style jack connector. Every TerraWave antenna is covered by the Company's two-year TerraNet warranty program. For questions and to purchase product, contact a regional sales executive at 210-375-8482, 800-851-4965 or sales@terrawave.com. Visit www.terrawave.com for additional information.

| Specifications | |
|-----------------------------|------------------------|
| Model | T09110Y11206 |
| Frequency Range | 824 ~ 960 MHz |
| Bandwidth | 136 MHz |
| Gain | 11 dBi |
| Horizontal Beamwidth | 48° |
| Vertical Beamwidth | 40° |
| Front-to-Back Ratio | ≥ 16 dB |
| VSWR | ≤ 1.5 |
| Nominal Impedance | 50 Ohms |
| Maximum Power Rating | 100 Watts |
| Polarization | Vertical or Horizontal |
| Connector | N-Style Jack |
| Antenna Length | 24" |
| Weight | 2 lbs |
| Wind Load | 120 mph |
| Element Material | Aluminum |
| Mast Mount Diameter | Ø1.5" ~ Ø2.0" |
| Operating Temperature Range | -22°F to +158°F |



E-Plane Pattern



H-Plane Pattern



TerraWave Solutions® 900 MHz 11 dBi Yagi Antenna with N-Style Jack Connector

Mounting Bracket Information for T09110Y11206

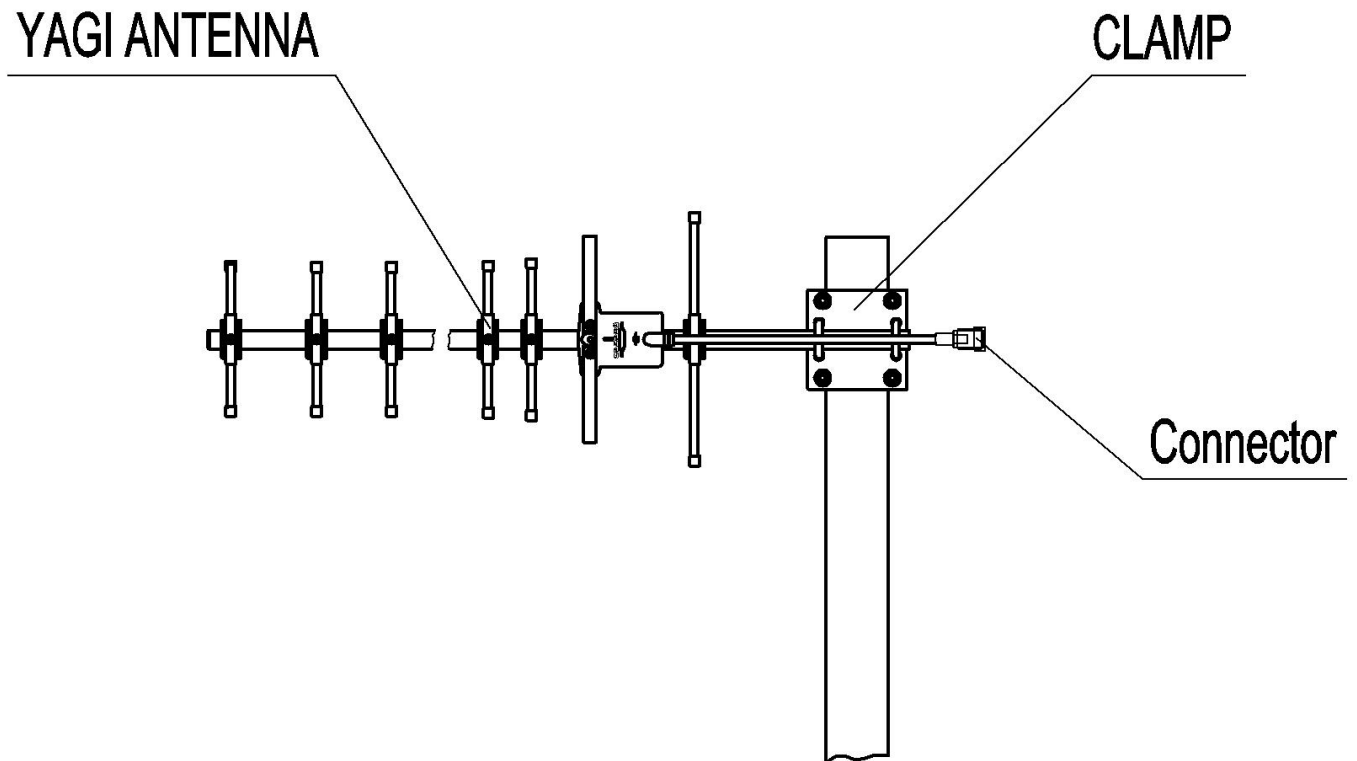
Polarization Information

Vertical Polarization

As shown in the picture below, all antenna grids are vertically pointing to ground.

Horizontal Polarization

1. Loosen the clamp and pull out the antenna
2. Rotate the clamp by 90 degree and push back onto the antenna. Tighten the clamp firmly.
3. Install the antenna such that all grids are pointing parallel (horizontally) to the ground.





TerraWave Solutions® 900 MHz 11 dBi Yagi Antenna with N-Style Jack Connector

Mounting Bracket Information for T09110Y11206

