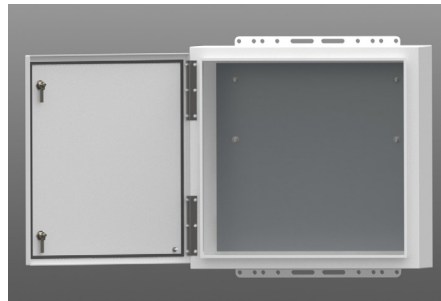
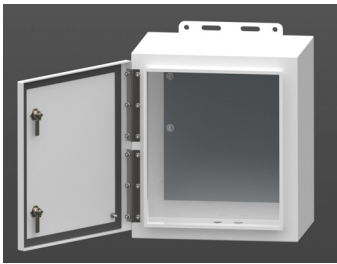




TerraWave Solutions® Aluminum Enclosure Line

Due to its light weight and resistance to corrosion, aluminum is an ideal substance for a multitude of uses and applications. With this in mind, TerraWave has created an enclosure line that utilizes .090 thick 5052-H32 aluminum to create reliable solutions for deployment in even the harshest environments. Our Aluminum Enclosure Line offers the same protection as steel without the weight or corrosion constraints. Carrying a NEMA 4X* rating, these enclosures are equipped to handle the elements, corrosion and tampering, making them a viable solution for industries like transportation, warehouses, and oil and gas. Each enclosure is white powder-coated, providing a uniform, high-quality, attractive finish. Every TerraWave enclosure is covered by the company's two-year TerraNet warranty program. For questions or to purchase a product, contact our Regional Sales Executives at 210.375.8482 or 800.851.4965 or sales@terra-wave.com.



Features and Benefits

- Protects RF equipment from the elements, theft and tampering
- Supports all major wireless vendors
- Operating temperature range: -40°F to +265°F
- Can be mounted indoors or outdoors to provide NEMA 4X protection*
- Doors are .125 thick for extra stiffness and security
- .090 thick mounting flanges for safe mounting
- Door seal for added protection of contents
- Stainless steel hinges
- Ground stud

Enclosure Construction

- Double wall bottom panel to support heavy objects, like batteries

Finish

- Powder-coated white

Locking Mechanism:

- Pad Lockable Cam Latch*

Available Accessories

- Aluminum Backplate
- Din Rails
- Pole Mount Kit
- Custom Jumpers
- NEMA Plug
- Lightning Protection
- Vents
- Power Receptacle
- Cord Grip

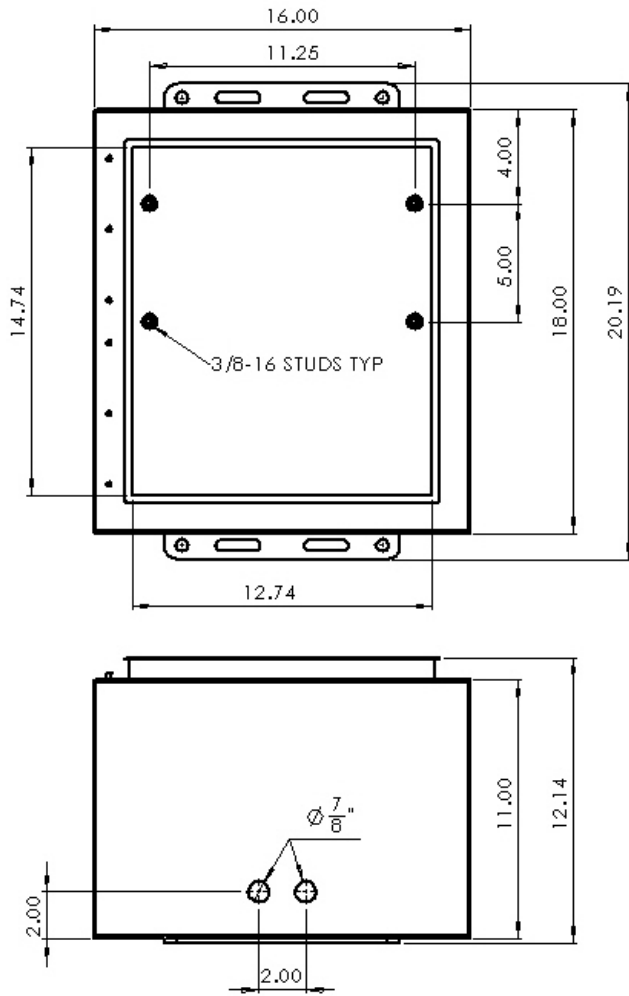
In addition to enclosures for wireless deployments, TerraWave can design custom enclosures for any application including IP cameras, switches, routers and more.

*NEMA rating of enclosure only—before modifications and additions

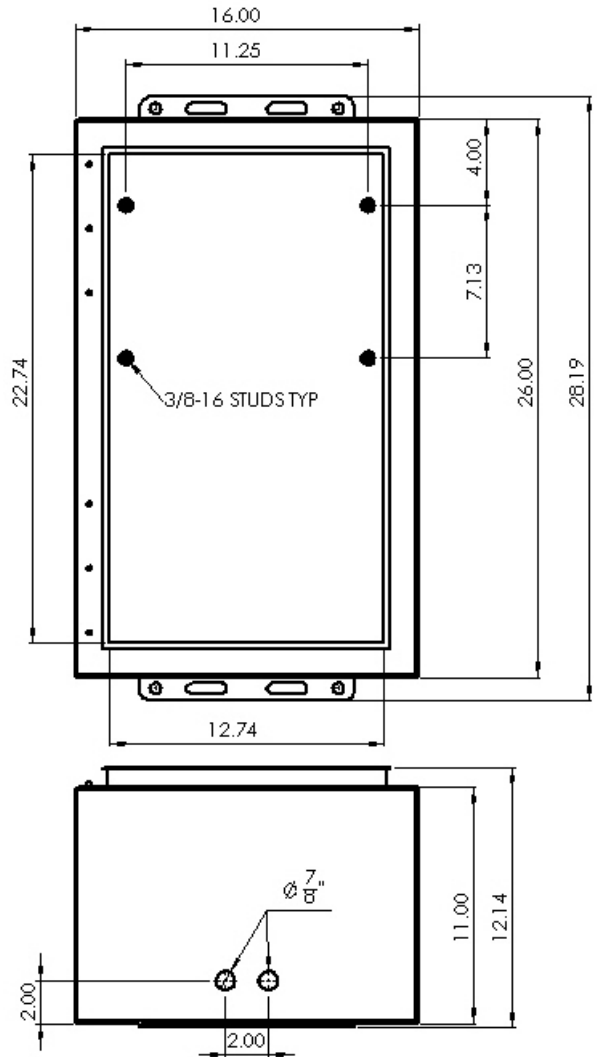
*Each enclosure comes with one lock. Additional locks available for purchase.

TerraWave Solutions® Aluminum Enclosure Line

Small Aluminum Enclosure

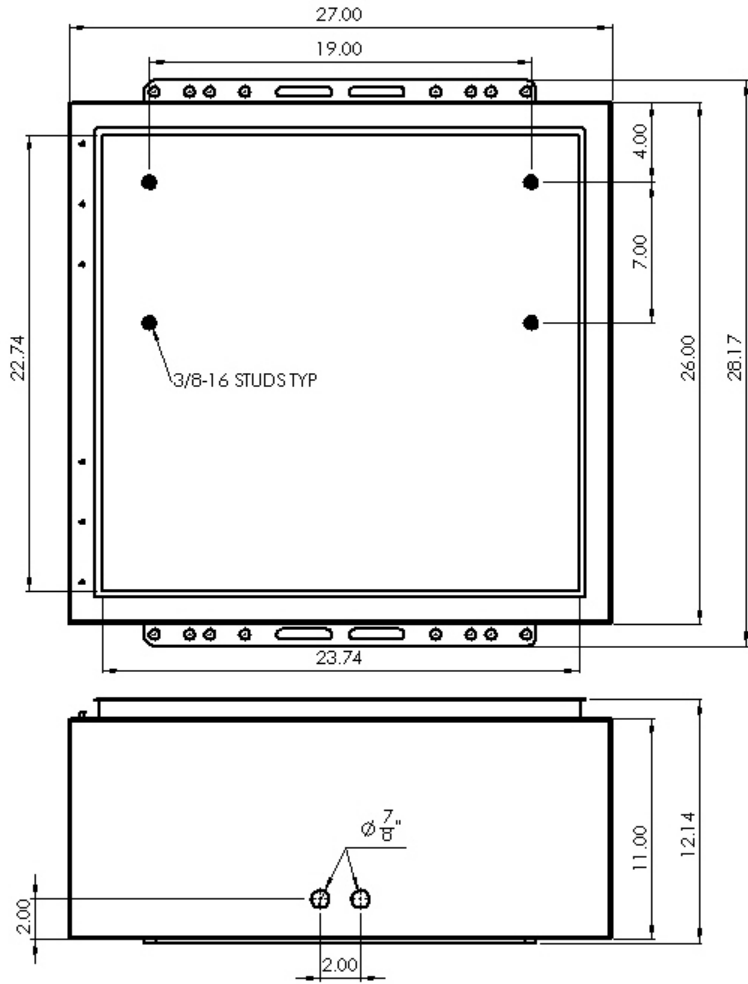


Medium Aluminum Enclosure

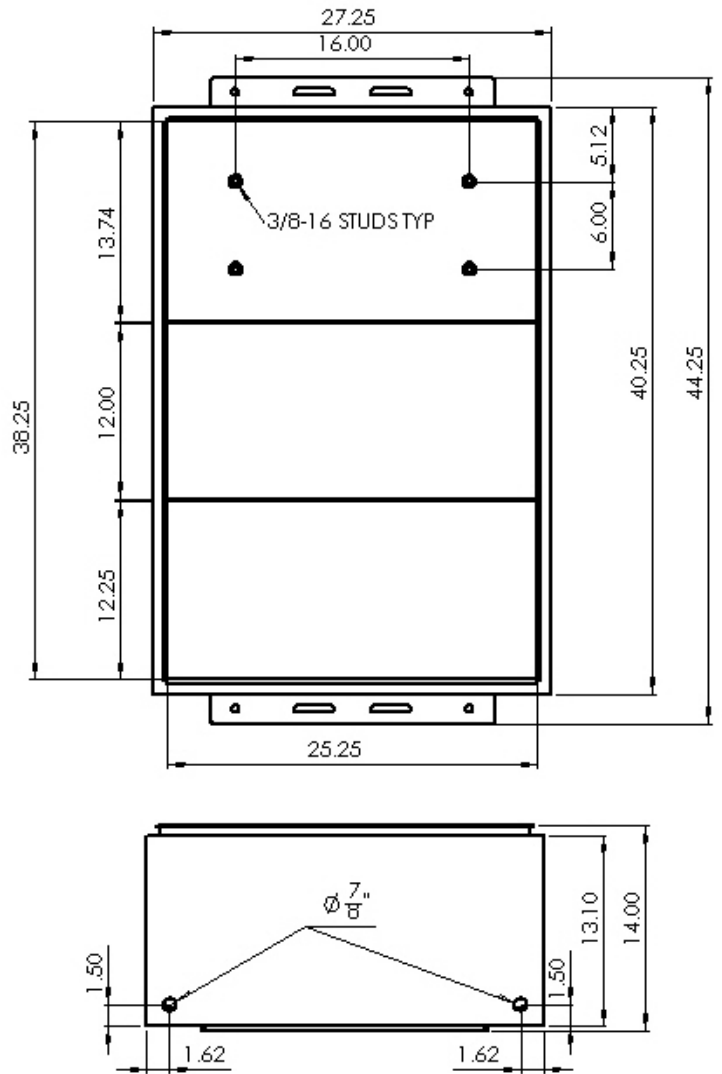


TerraWave Solutions® Aluminum Enclosure Line

Large Aluminum Enclosure



Xtra Large Aluminum Enclosure



*Shelves are welded to enclosure.