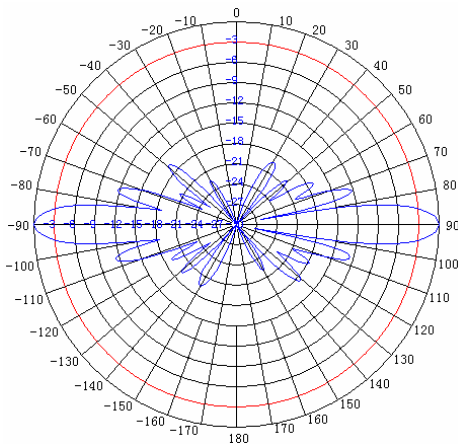
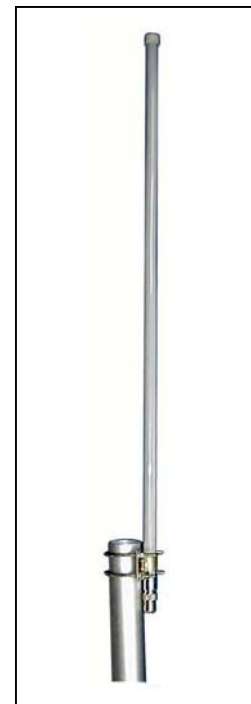


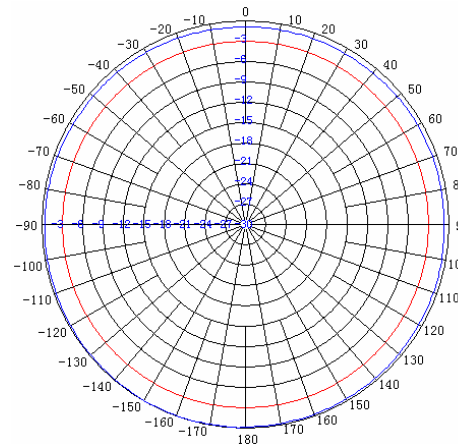
TerraWave Solutions® PERFORMANCE SERIES
2.4 GHz 10 dBi Gray Fiberglass Omni Antenna with Side Mount and N-Style Jack Connector

TerraWave’s 10 dBi gray fiberglass omnidirectional antenna is designed for indoor and outdoor 2.4 GHz wireless local area networks. It features UV stable, vented radome that provides ultimate sustainability against extreme weather conditions such as high temperature, strong winds and rain. Includes a sturdy side mount for convenient mast or wall mounting. Every TerraWave antenna is covered by the company’s two year TerraNet warranty program. Visit www.terrawave.com for additional information.

Specifications	
Model	T24100O10006SG
Frequency Range	2400 ~ 2483 MHz
Bandwidth	83 MHz
Gain	10 dBi
Horizontal Beamwidth	360°
Vertical Beamwidth	10.5°
VSWR	≤ 1.5
Nominal Impedance	50 Ohms
Maximum Power Rating	100 Watts
Polarization	Vertical
Connector	N-Style Jack
Length	39.4”
Wind Load	120 mph
Radome	Gray Fiberglass
Mast Mount Diameter	Ø1.5” ~ Ø2.0”
Operating Temperature Range	-22°F ~ 158°F



E-Plane



H-Plane

TerraWave Solutions® **PERFORMANCE SERIES**
2.4 GHz 10 dBi Gray Fiberglass Omni Antenna with Side Mount and N-Style Jack Connector

Mounting Bracket Information for T24100O10006SG

