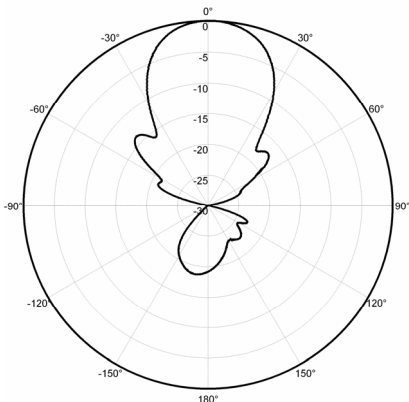
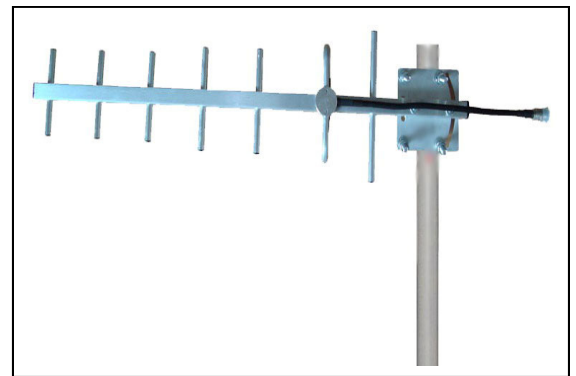




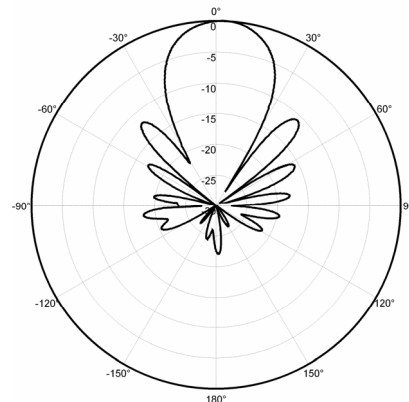
TerraWave Solutions® 806-960 MHz 10 dBi Yagi Antenna with N-Style Jack Connector

TerraWave's 10 dBi directional Yagi antenna is designed for applications in the 900 MHz frequency, including, radio frequency identification (RFID) applications, cellular systems, global system for mobile (GSM) communications, code-division multiple access systems (CDMA) applications, multipoint applications, and wireless video links. It features a high gain; can be mounted in a horizontal or vertical polarization. Includes heavy-duty steel mounting brackets and an N-style jack connector. Every TerraWave antenna is covered by the Company's two year TerraNet warranty program. Visit www.terrawave.com for additional information.

Specifications	
Model	T09100Y11206T
Frequency Range	806 ~ 960 MHz
Bandwidth	136 MHz
Gain	10 dBi
Horizontal Beamwidth	54°
Vertical Beamwidth	48°
Front-to-Back Ratio	≥ 14 dB
VSWR	≤ 1.5
Nominal Impedance	50 Ohms
Maximum Power Rating	50 Watts
Polarization	Vertical or Horizontal
Connector	N-Style Jack
Antenna Length	29.5"
Pigtail Length	12"
Weight	1.0 lbs
Wind Load	120 mph
Element Material	Aluminum
Mast Mount Diameter	Ø1.18" ~ Ø1.97"
Operating Temperature Range	-40°F to +158°F



E-Plane Pattern



H-Plane Pattern



TerraWave Solutions® 806-960 MHz 10 dBi Yagi Antenna with N-Style Jack Connector

Mounting Bracket Information for T09100Y11206T

Polarization Information

Vertical Polarization

As shown in the picture below, all antenna grids are vertically pointing to ground.

Horizontal Polarization

1. Loosen the clamp and pull out the antenna
2. Rotate the clamp 90 degrees and push back onto the antenna. Tighten the clamp firmly.
3. Install the antenna so all grids are pointing parallel to the ground (horizontally).

