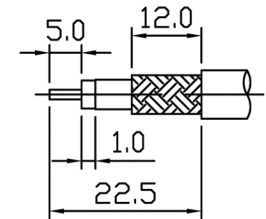
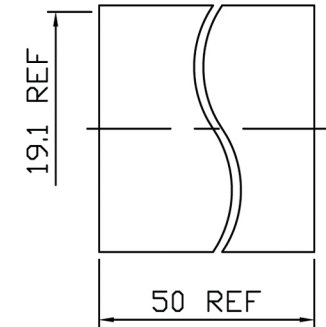
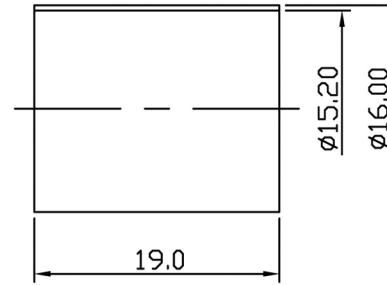
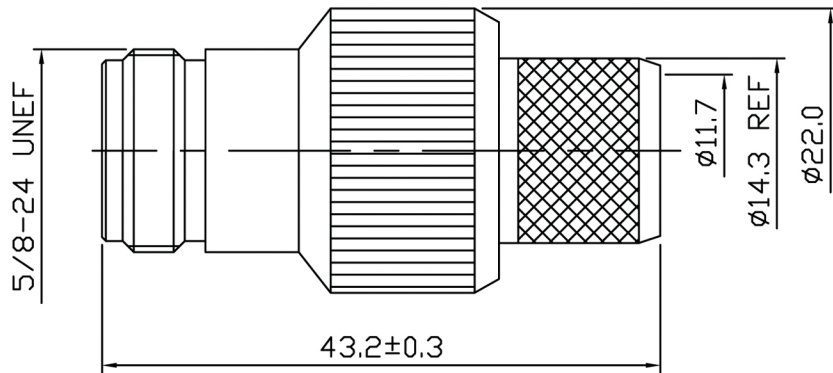


REVISION

ISS	ZONE	DESCRIPTION



STRIPPING DIMENSION

NOTE:

- 1.Impedance : 50Ω
- 2.Frequency Range: DC 0-11 GHz
- 3.V.S.W.R. : ≤ 1.3 @ 6 GHz
- 4.Voltage Rating:1500V rms
- 5.Contact Resistance:Center Contacts : 1.0 mΩ Max
Outer Contacts : 1.0 mΩ Max
- 6.Insulation Resistance : 5000 MΩ MIN.
- 7.Interface in Accordance With:MIL-STD-348A
- 8.Operating Temperature Range:-65°~165°C
- 9.ROHS Compliance.

NO.	DESCRIPTION	MATERIAL	FINISH	Q'TY	DRAWN NO.
6	HEAT TUBING	PE	BLACK	1	9809047F
5	FERRULE	BRASS	SILVER	1	M-0150
4	CENTER CONTACT	Be Cu	GOLD	1	9809048D
3	BARREL	BRASS	SILVER	1	E-0090
2	INSULATOR	TEFLON	NONE	1	9809048C
1	BODY	BRASS	SILVER	1	9809048B

TOLERANCES			
DIMENSIONS ARE IN MILLIMETER			
UNLESS OTHERWISE SPECIFIED			
.X		±0.2	
.XX		±0.1	
.XXX		±0.05	
ANGLES		±5°	

TITLE
N-Style Jack for TWS-600 Cable Captivated Center Pin
PART NO.
CON-06-600-CP
DRAWN NO.
FILE PATH:

TerraWave Solutions	
APPROVED	DATE
CHECKED	DATE
DRAWN	DATE