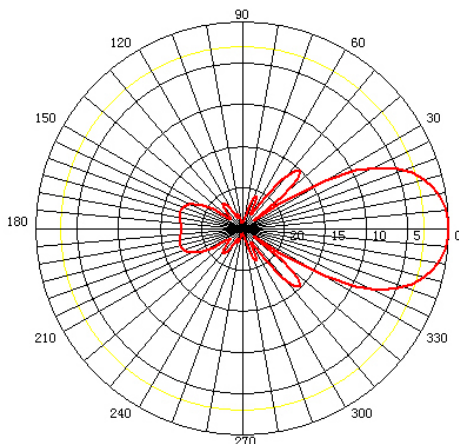
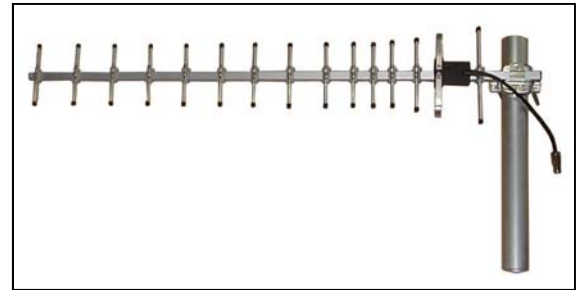




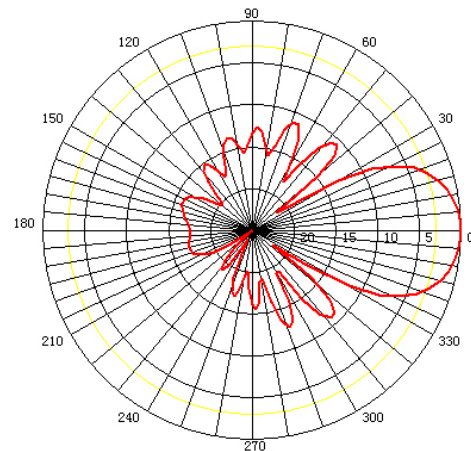
TerraWave Solutions® 900 MHz 13 dBi Yagi Antenna with N-Style Jack Connector

TerraWave's 13 dBi directional yagi antenna is designed for applications in the 900 MHz frequency, including, radio frequency identification (RFID) applications, cellular systems, global system for mobile (GSM) communications, code-division multiple access systems (CDMA) applications, multipoint applications and wireless video links. It features a high gain and can be mounted in a horizontal or vertical polarization. Includes heavy-duty steel mounting brackets and an N-style jack connector. Every TerraWave antenna is covered by the Company's two year TerraNet warranty program. Visit www.terrawave.com for additional information.

Specifications	
Model	T09130Y11206
Frequency Range	824 ~ 960 MHz
Bandwidth	136 MHz
Gain	13 dBi
Horizontal Beamwidth	30°
Vertical Beamwidth	30°
Front-to-Back Ratio	≥ 18 dB
VSWR	≤ 1.5
Nominal Impedance	50 Ohms
Maximum Power Rating	100 Watts
Polarization	Vertical or Horizontal
Connector	N-Style Jack
Antenna Length	40"
Weight	3 lbs
Wind Load	120 mph
Element Material	Anodized Aluminum
Mast Mount Diameter	Ø1.5" ~ Ø2.0"
Operating Temperature Range	-22°F to +158°F



E-Plane Pattern



H-Plane Pattern

TerraWave Solutions® 900 MHz 13 dBi Yagi Antenna with N-Style Jack Connector

Mounting Bracket Information for T09130Y11206

Polarization Information

Vertical Polarization

As shown in the picture below, all antenna grids are vertically pointing to ground.

Horizontal Polarization

1. Loosen the clamp and pull out the antenna
2. Rotate the clamp by 90 degree and push back onto the antenna. Tighten the clamp firmly.
3. Install the antenna such that all grids are pointing parallel (horizontally) to the ground.

