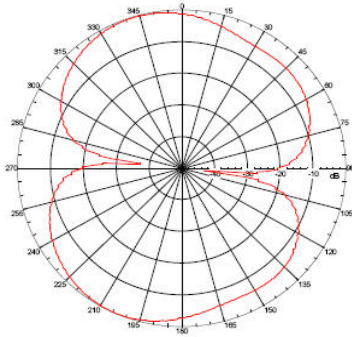
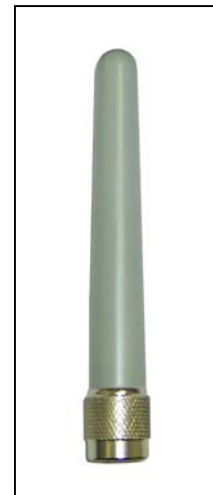


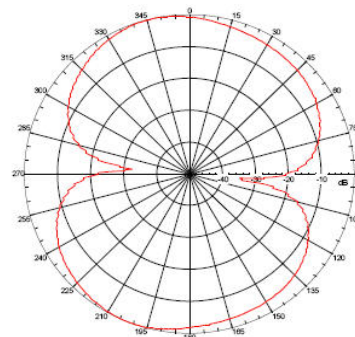
Dual Band 2/3 dBi Non-Articulating MIMO Rubber Duck With RPSMA Connector

TerraWave's new dual band 2.4/4.9-5.825 GHz non-articulating multiple-input and multiple-output (MIMO) rubber duck antenna is designed to operate with many manufacturers' enterprise-class 802.11n MIMO access points (APs). This antenna features a short, sleek design, making it an ideal and aesthetically pleasing antenna to support demanding applications in next generation IEEE 802.11n wireless communication systems for indoor applications. Every TerraWave antenna is covered by the Company's two-year TerraNet warranty program.

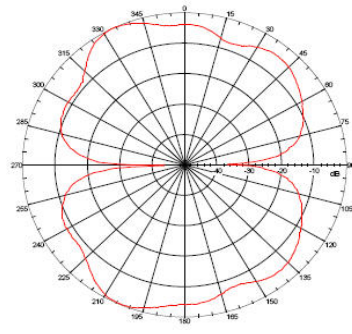
Specifications	
Model	M7020030MR10020
Frequency Range	2400 ~ 2500 / 4900 ~ 5825 MHz
Gain	2 / 3 dBi
Vertical Beamwidth	75°
Horizontal Beamwidth	360°
Maximum Power	2 Watts
VSWR	≤ 2.0
Connector	RPSMA Plug
Operating Temperature Range	14° to +131° F
Dimensions	3.61" x .39"
Weight	0.046 lbs



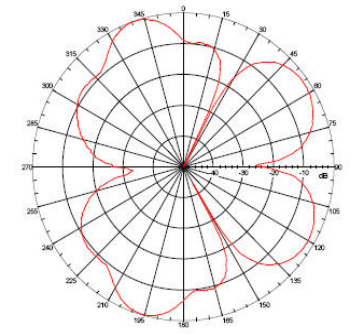
Vertical Radiation Pattern @ 2.4 GHz



Vertical Radiation Pattern @ 2.5 GHz



Vertical Radiation Pattern @ 4.9 GHz



Vertical Radiation Pattern @ 5.8 GHz