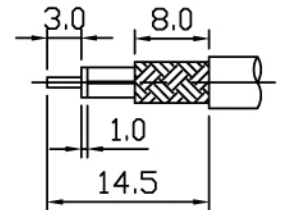
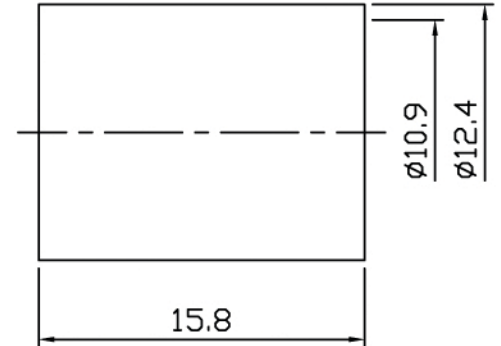
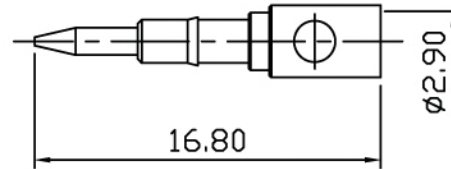
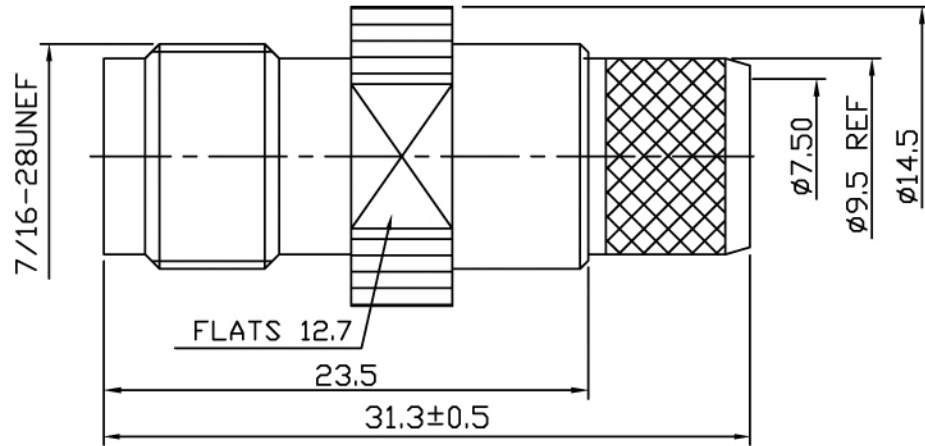


REVISION

| ISS | ZONE | DESCRIPTION |
|-----|------|-------------|
| | | |



STRIPPING DIMENSION

NOTE:
 1.Impedance : 50Ω
 2.Frequency Range: DC 0-11 GHz
 3.V.S.W.R. : ≤ 1.3 @ 6 GHz
 4.Voltage Rating:500V rms
 5.Contact Resistance:Center Contacts : 1.5 mΩ
 Outer Contacts : 0.5 mΩ
 6.Insulation Resistance : 5000 MΩ MIN.
 7.Operating Temperature Range:-65°~165°C
 8.RoHS Compliance.

| TOLERANCES | |
|------------------------------|-------|
| DIMENSIONS ARE IN MILLIMETER | |
| UNLESS OTHERWISE SPECIFIED | |
| .X | ±0.2 |
| .XX | ±0.1 |
| .XXX | ±0.05 |
| ANGLES | ±5° |

| | |
|---|--|
| RPTNC Jack for TWS-400 Cable Captivated Center Pin | |
| PART NO. | |
| CON-01-400-CP | |
| DRAWN NO. | |
| FILE PATH: | |

| | |
|----------------------------|------|
| TerraWave Solutions | |
| APPROVED | DATE |
| CHECKED | DATE |
| DRAWN | DATE |

| NO. | DESCRIPTION | MATERIAL | FINISH | Q'TY | DRAWN NO. |
|-----|----------------|----------|--------|------|-----------|
| 5 | FERRULE | BRASS | NICKEL | 1 | M-0108 |
| 4 | CENTER CONTACT | BRASS | GOLD | 1 | C-0250 |
| 3 | BARREL | BRASS | NICKEL | 1 | E-0090 |
| 2 | INSULATOR | TEFLON | NONE | 1 | T-0556 |
| 1 | BODY | BRASS | NICKEL | 1 | B-0362 |