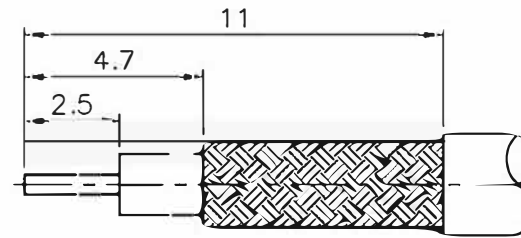


FOR CUSTOMER

REVISIONS

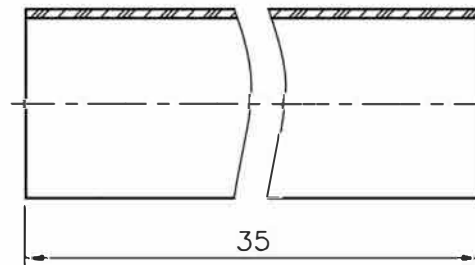
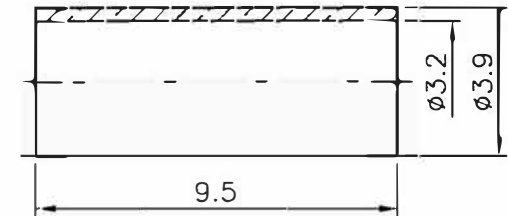
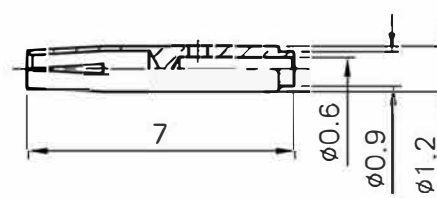
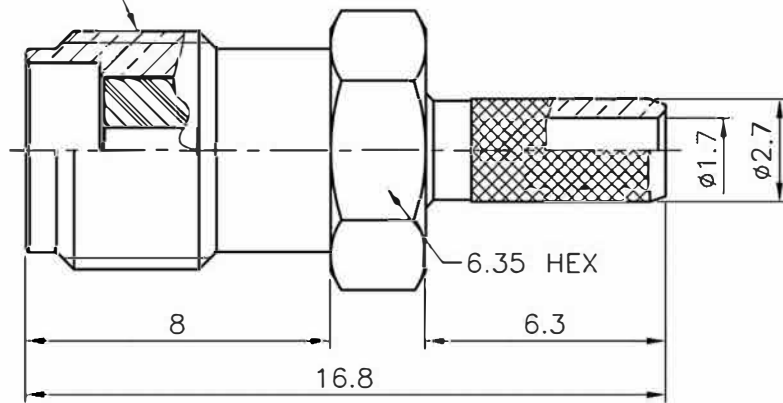
ISS	SYMBOL	DESCRIPTION \ DATE
A1		

REMARK: RoHS COMPLIANT



RECOMMENDED
CABLE STRIPPING DIM'S

1/4-36UNS-2A



NOTES: FINISH (PLATING THICKNESS IN MICRO-INCHES)

1. BRASS PER QQ-B-626
2. NICKEL PL 70 MIN THICK OVER COPPER STRIKE
3. GOLD PL 30 MIN OVER NICKEL PL 70 MIN THICK OVER COPPER STRIKE
4. TEFLON MIL-P-19468
5. BERYLLIUM COPPER PER QQ-C-530
6. BRASS JIS H 3250, C 2700

1. CRIMPED FERRULE
HEX CRIMP SIZE .128" (3.25mm)

2. CONTACT PIN TO SOLDER

						DIMENSIONS ARE IN MILLIMETERS				PART NO.		VENTEV	
						UNLESS OTHERWISE SPECIFIED TOLERANCES				CON-17-100			
HEAT SHRINK TUBE						BLACK				APPROVED	DATE	TITLE SMA Jack for TWS-100 Cable	
FERRULE						NOTE 6 NOTE 2				CHECKED	DATE		
CONTACT PIN						NOTE 5 NOTE 3				DRAWN	DATE	DRAWING NO.	
INSULATOR						NOTE 4 WHITE				FILE NO.			
BODY						NOTE 1 NOTE 2							
NO.	DESCRIPTION	MATERIAL	FINISH	Q'TY	DRAWING NO.	SCALE	5/1	ISSUE	A1				

DIMENSIONS ARE IN MILLIMETERS

UNLESS OTHERWISE SPECIFIED TOLERANCES

- 0.5~6 = ±0.2
- >6~30 = ±0.4
- >30~120 = ±0.6
- >120~315 = ±1
- >315~1000 = ±1.6
- ANGLES = ±5°

PART NO.
CON-17-100

APPROVED DATE

CHECKED DATE

DRAWN DATE

VENTEV

TITLE

SMA Jack for TWS-100 Cable

DRAWING NO.

FILE NO.

NO. DESCRIPTION MATERIAL FINISH Q'TY DRAWING NO. SCALE 5/1 ISSUE A1