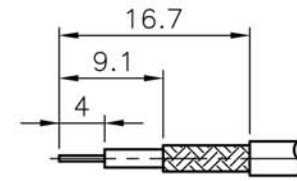


REVISIONS

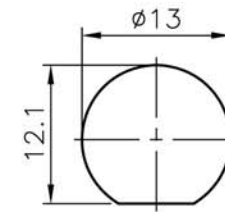
| ISS | SYMBOL | DESCRIPTION\DATE |
|-----|--------|------------------|
| | | |

REMARK: RoHS COMPLIANT

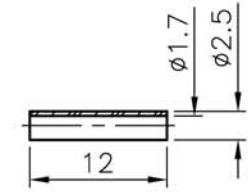
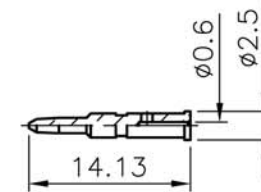
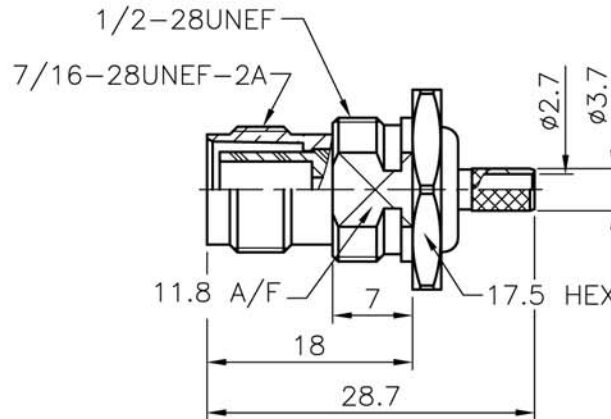
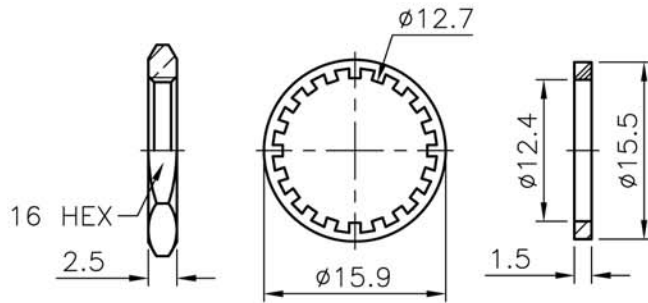
FOR CUSTOMER



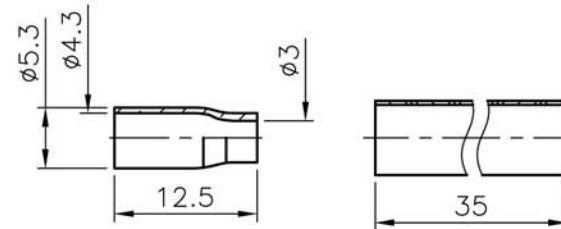
RECOMMENDED CABLE STRIPPING DIM'S



RECOMMENDED MOUNTING HOLE



- NOTES: FINISH (PLATING THICKNESS IN MICRO-INCHES)
1. BRASS PER QQ-B-626
 2. NICKEL PL 70 MIN THICK OVER COPPER STRIKE
 3. GOLD PL 3 MIN OVER NICKEL PL 70 MIN THICK OVER COPPER STRIKE
 4. TEFLON MIL-P-19468
 5. BRASS JIS H 3250, C 2700



1. CRIMPED FERRULE
HEX CRIMP SIZE .178" (4.52mm)
2. CRIMPED CONTACT PIN
HEX CRIMP SIZE .068" (1.72mm)
3. MAX. PANEL THICKNESS=3.5mm

| NO. | DESCRIPTION | MATERIAL | FINISH | Q'TY | DRAWING NO. |
|-----|------------------|----------|---------|------|-------------|
| | HEAT SHRINK TUBE | | BLACK | | |
| | NUT | NOTE 1 | NOTE 2 | | |
| | WASHER | SS41 | NOTE 2 | | |
| | GASKET | RUBBER | ORANGE | | |
| | FERRULE | NOTE 5 | NOTE 2 | | |
| | SPACER | DELTRIN | NATURAL | | |
| | CONTACT PIN | NOTE 1 | NOTE 3 | | |
| | BRAID HOLDER | NOTE 1 | NOTE 2 | | |
| | INSULATOR | NOTE 4 | WHITE | | |
| | BODY | NOTE 1 | NOTE 2 | | |

| | | | | | |
|---------------------------------------|-------|-------|----------|------------|--|
| DIMENSIONS ARE IN MILLIMETERS | | | | PART NO. | |
| UNLESS OTHERWISE SPECIFIED TOLERANCES | | | | CON-03-100 | |
| 0.5~6 | = | ±0.2 | APPROVED | DATE | |
| >6~30 | = | ±0.4 | CHECKED | DATE | |
| >30~120 | = | ±0.6 | DRAWN | DATE | |
| >120~315 | = | ±1 | | | |
| >315~1000 | = | ±1.6 | | | |
| ANGLES | = | ±5° | | | |
| SCALE | 1.5/1 | ISSUE | A1 | | |

| | |
|---------------------------------------|--|
| TerraWave Solutions | |
| TITLE | |
| RPTNC Bulkhead Jack for TWS-100 Cable | |
| DRAWING NO. | |
| FILE NO. | |