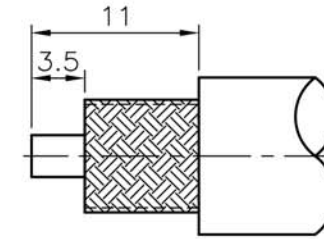


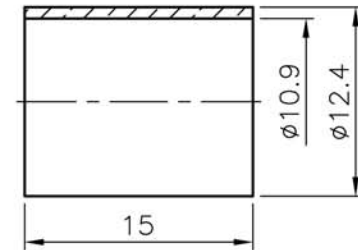
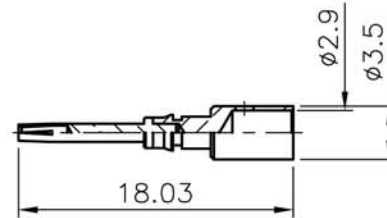
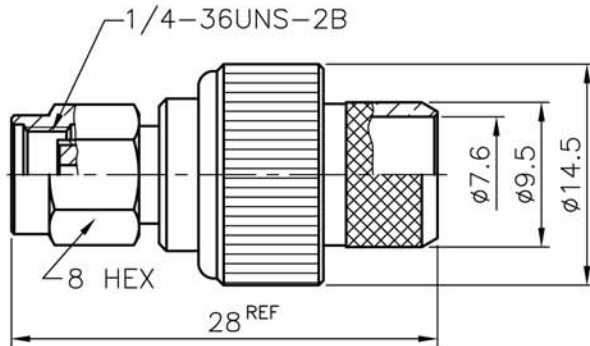
REVISIONS		DESCRIPTION\DATE
ISS	SYMBOL	

REMARK: RoHS COMPLIANT

FOR CUSTOMER

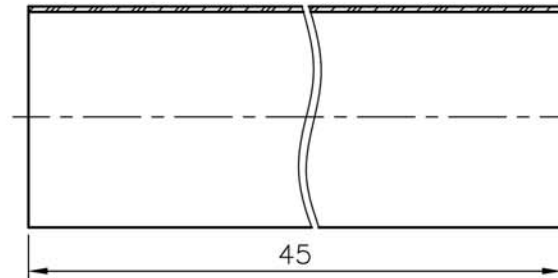


RECOMMENDED
CABLE STRIPPING DIM'S



NOTES: FINISH (PLATING THICKNESS IN MICRO-INCHES)

1. BRASS PER QQ-B-626
2. NICKEL PL 70 MIN THICK OVER COPPER STRIKE
3. GOLD PL 30 MIN OVER NICKEL PL 70 MIN THICK OVER COPPER STRIKE
4. TEFLON MIL-P-19468
5. BERYLLIUM COPPER PER QQ-C-530
6. BRASS JIS H 3250, C 2700



1. CRIMPED FERRULE
HEX CRIMP SIZE .429" (10.9 mm)
2. CRIMPED CONTACT PIN
HEX CRIMP SIZE .118" (3 mm)
OR SOLDER

NO.	DESCRIPTION	MATERIAL	FINISH	Q'TY	DRAWING NO.
	HEAT SHRINK TUBE		BLACK		
	FERRULE	NOTE 6	NOTE 2		
	CONTACT PIN	NOTE 1	NOTE 3		
	CONTACT PIN	NOTE 5	NOTE 3		
	SHELL	NOTE 1	NOTE 2		
	GASKET	SILICONE	RED		
	C RING	NOTE 5	NONE		
	BRAID HOLDER	NOTE 1	NOTE 2		
	INSULATOR	NOTE 4	WHITE		
	BODY	NOTE 1	NOTE 2		

DIMENSIONS ARE IN MILLIMETERS				PART NO.	
UNLESS OTHERWISE SPECIFIED TOLERANCES				CON-20-400	
0.5~6 = ±0.2				APPROVED	DATE
>6~30 = ±0.4				CHECKED	DATE
>30~120 = ±0.6				DRAWN	DATE
>120~315 = ±1					
>315~1000 = ±1.6					
ANGLES = ±5°					
SCALE	2/1	ISSUE	A1		

TerraWave Solutions	
TITLE	RPSMA Plug for TWS-400 Cable
DRAWING NO.	
FILE NO.	