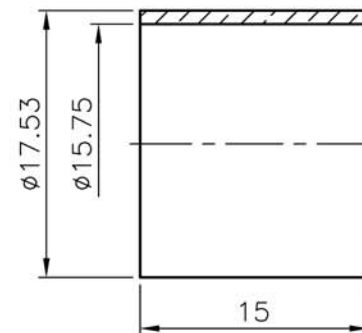
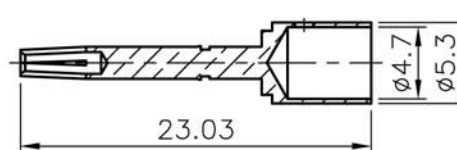
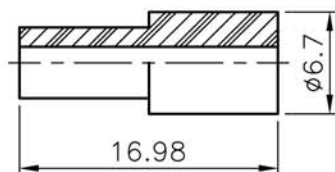
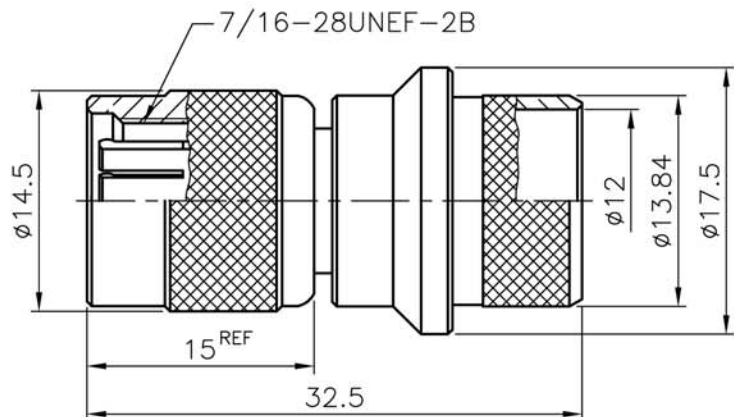


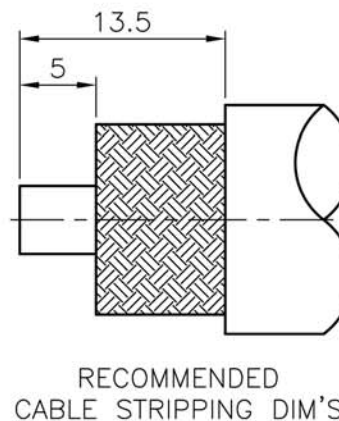
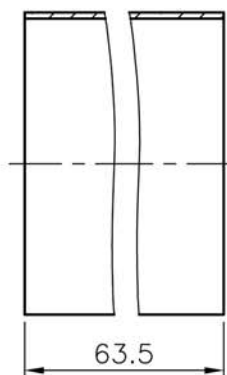
REVISIONS	
ISS	SYMBOL
A1	

REMARK: RoHS COMPLIANT

FOR CUSTOMER



- NOTES: FINISH (PLATING THICKNESS IN MICRO-INCHES)
1. BRASS PER QQ-B-626
  2. NICKEL PL 70 MIN THICK OVER COPPER STRIKE
  3. GOLD PL 3 MIN OVER NICKEL PL 70 MIN THICK OVER COPPER STRIKE
  4. TEFLON MIL-P-19468
  5. BRASS JIS H 3250, C 2700



1. CRIMPED FERRULE  
HEX CRIMP SIZE .6" (15.24mm)
2. CONTACT PIN TO SOLDER

	HEAT SHRINK TUBE		BLACK		
	FERRULE	NOTE 5	NOTE 2		
	CONTACT PIN	NOTE 1	NOTE 3		
	INSULATOR	NOTE 4	WHITE		
	SHELL	NOTE 1	NOTE 2		
	GASKET	SILICONE	RED		
	C RING	SS41	NOTE 2		
	WASHER	DELTRIN	NATURAL		
	WASHER	SS41	NOTE 2		
	BODY	NOTE 1	NOTE 2		
NO.	DESCRIPTION	MATERIAL	FINISH	Q'TY	DRAWING NO.

DIMENSIONS ARE IN MILLIMETERS  
UNLESS OTHERWISE SPECIFIED TOLERANCES

0.5~6 = ±0.2  
>6~30 = ±0.4  
>30~120 = ±0.6  
>120~315 = ±1  
>315~1000 = ±1.6  
ANGLES = ±5°

PART NO.	CON-02-600
APPROVED	DATE
CHECKED	DATE
DRAWN	DATE

TerraWave Solutions	
TITLE	RPTNC Plug for TWS-600 Cable
DRAWING NO.	
FILE NO.	