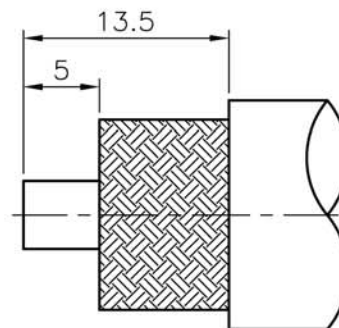
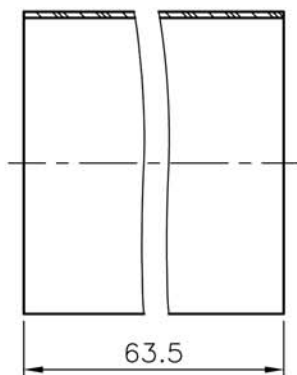
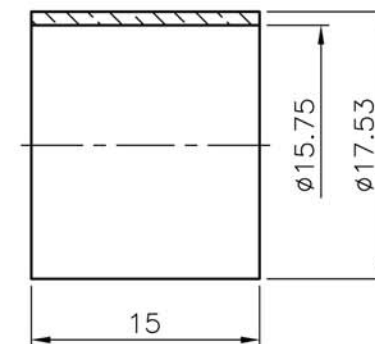
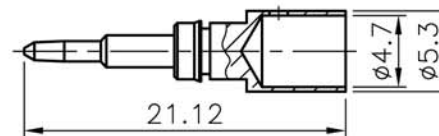
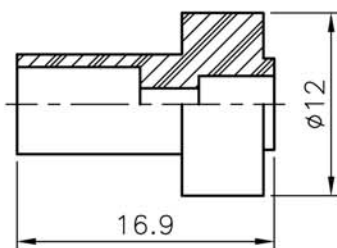
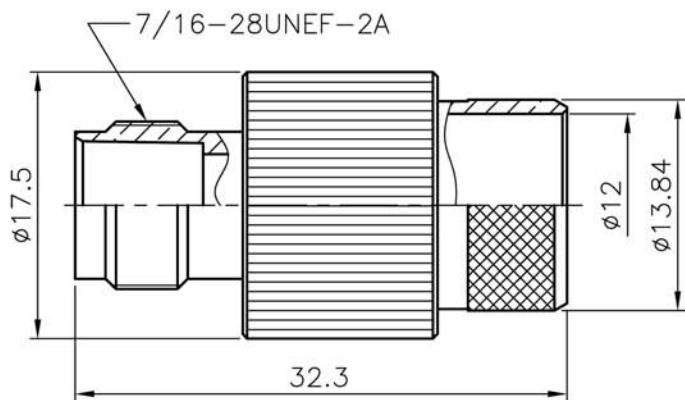


REVISIONS		
ISS	SYMBOL	DESCRIPTION\DATE
A1		

REMARK: RoHS COMPLIANT

FOR CUSTOMER



RECOMMENDED
CABLE STRIPPING DIM'S

1. CRIMPED FERRULE
HEX CRIMP SIZE .6" (15.24mm)
2. CONTACT PIN TO SOLDER

- NOTES: FINISH (PLATING THICKNESS IN MICRO-INCHES)
1. BRASS PER QQ-B-626
 2. NICKEL PL 70 MIN THICK OVER COPPER STRIKE
 3. GOLD PL 3 MIN OVER NICKEL PL 70 MIN THICK OVER COPPER STRIKE
 4. TEFLON MIL-P-19468
 5. BRASS JIS H 3250, C 2700

						DIMENSIONS ARE IN MILLIMETERS				PART NO.		TerraWave Solutions	
						UNLESS OTHERWISE SPECIFIED TOLERANCES				CON-01-600			
HEAT SHRINK TUBE						BLACK				APPROVED	DATE	TITLE RPTNC Jack for TWS-600 Cable	
FERRULE						NOTE 5 NOTE 2				CHECKED	DATE		
CONTACT PIN						NOTE 1 NOTE 3				DRAWN	DATE	DRAWING NO.	
INSULATOR						NOTE 4 WHITE				FILE NO.			
BODY						NOTE 1 NOTE 2							
NO.	DESCRIPTION	MATERIAL	FINISH	Q'TY	DRAWING NO.	SCALE	2/1	ISSUE	A1				

0.5~6 = ±0.2
 >6~30 = ±0.4
 >30~120 = ±0.6
 >120~315 = ±1
 >315~1000 = ±1.6
 ANGLES = ±5°