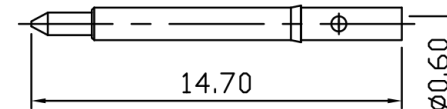
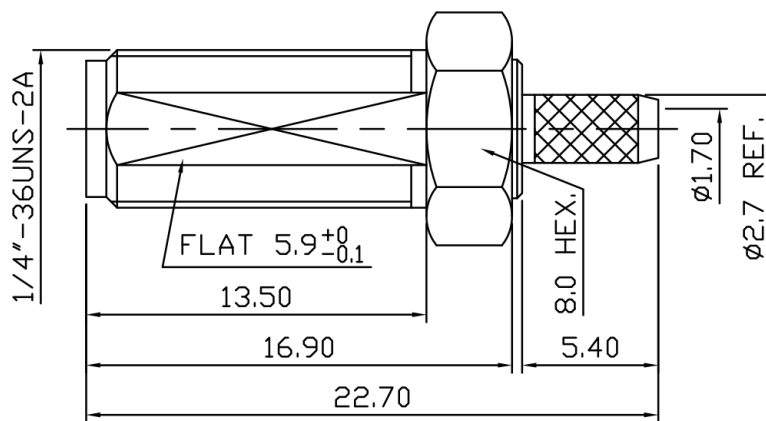
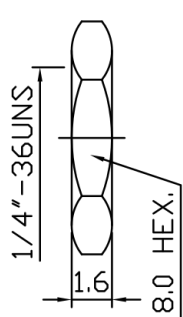


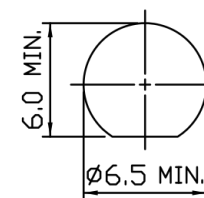
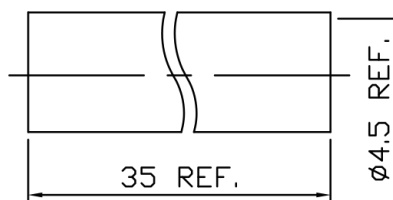
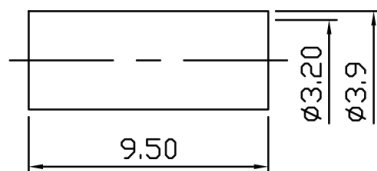
REVISION

ISS	ZONE	DESCRIPTION

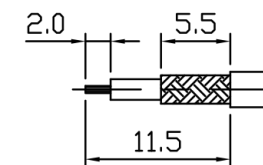


NOTE:

- 1.Impedance: 50Ω
- 2.Frequency Range: 0-18 GHz
- 3.VSWR: 1.2 MAX. @ 6GHz
- 4.Voltage Rating: 335V rms
- 5.Contact Resistance: Center Contacts: 2 mΩ Max  
Outer Contacts: 2 mΩ Max
- 6.Insulation Resistance: 5000 MΩ MIN.
- 7.Operating Temperature Range: -55°~155°C
- 8.RoHS Compliance.



MOUNTING HOLE



STRIPPING DIMENSION

7	HEAT TUBING	PE	NONE	1	H-0059
6	FERRULE	BRASS	GOLD	1	M-0021
5	CENTER CONTACT	BRASS	GOLD	1	C-0575
4	BODY	BRASS	GOLD	1	10202012B
3	INSULATOR	PTFE	NONE	1	T-0515
2	WASHER	BRASS	GOLD	1	G-0017
1	NUT	BRASS	GOLD	1	D-0008

TOLERANCES  
DIMENSIONS ARE IN MILLIMETER

UNLESS OTHERWISE SPECIFIED

.X	±0.2
.XX	±0.1
.XXX	±0.05
ANGLES	±5°

TerraWave RPSMA Long Bulkhead Jack for TWS-100 Cable		TerraWave Solutions	
PART NO.		CON-30-100-L	
DRAWN NO.			
FILE PATH:			

NO.	DESCRIPTION	MATERIAL	FINISH	Q'TY	DRAWN NO.	SCALE	4/1	ISSUE	A-0	FILE PATH:
-----	-------------	----------	--------	------	-----------	-------	-----	-------	-----	------------