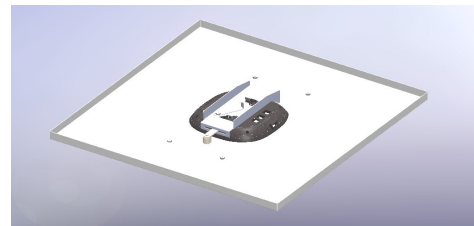
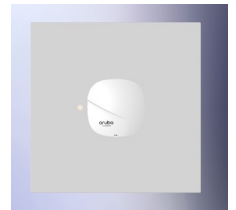
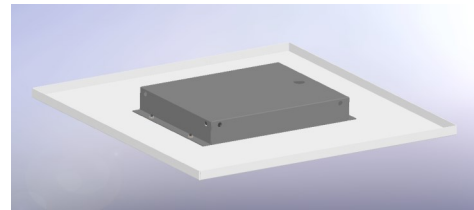
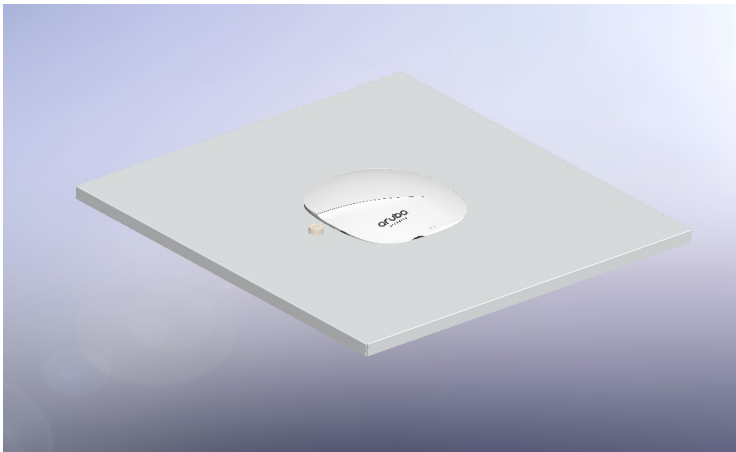


## Wi-Fi Ceiling Tile Enclosure for the Aruba AP325

Ventev's 24" x 24" x 1.5" Universal Ceiling Tile Enclosure mounts and protects the Aruba 325 access point (AP) in an **aesthetically-pleasing** and inconspicuous solution within a suspended ceiling. The enclosure fits into both standard or Tegular suspended ceilings. It fits in a 2' x 2' ceiling tile grid and is constructed of powder-coated aluminum. Designed to meet NEC300-22 and 300-23 for installation in plenum/air-handling areas. Includes holes for securing the enclosure to the ceiling system, cord grip and CAT60 key lock.

Every Ventev enclosure is covered by the company's two-year TerraNet warranty program. For questions or to purchase product, contact Regional Sales Executive at 210-375-8482, 800-851-4965 or [sales@ventev.com](mailto:sales@ventev.com).



Keys included with enclosure

Ceiling Tile for Aruba 325  
Part #: TW-CTEN-2X2-325U  
SKU: 559087

Installed in a suspended ceiling

### Features

- Size: 23.75" x 23.75" x 4". Easily fits into any 2' x 2' or 2' x 4' ceiling tile grid
- Constructed of powder-coated aluminum, making it one of the lightest enclosures on the market
- Weight: 4.5 lbs
- Includes key lock for additional security
- Sleek form factor allows for simple installation — no modification of existing ceiling tile grid required\*
- Includes cord grip
- Meets NEC300-22 and 300-23 standards, making it safe for plenum/air handling installations
- Meets common building code requirements by including integrated mounting tabs to assist in securing enclosure to permanent fixture or structure

### Benefits

- Lightweight enclosure reduces strain on ceiling grid to accommodate the AP
- **Aesthetic** design blends enclosure and AP seamlessly with existing ceiling tile grid
- Built-in security
- Designed to allow the AP to be serviced without removing enclosure from ceiling tile grid
- Minimal components allows for a simple installation
- No tools required for installation of Access Point
- Enclosure back box protects against dust and debris to assist with compliance with ICRA requirements