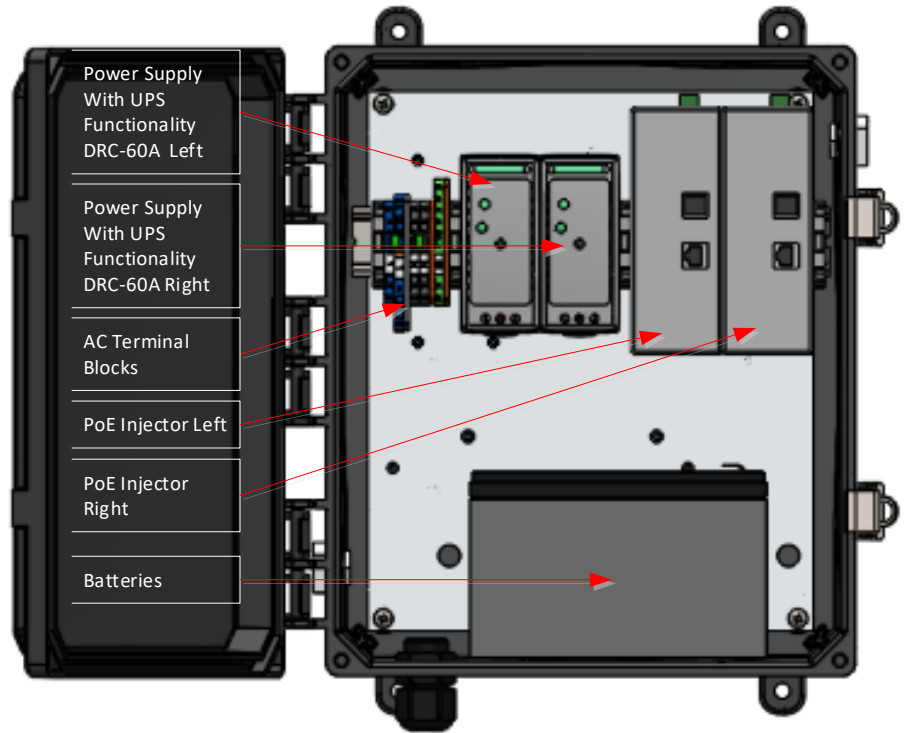


Troubleshooting Guide for Dual Port PoE UPS Enclosure System

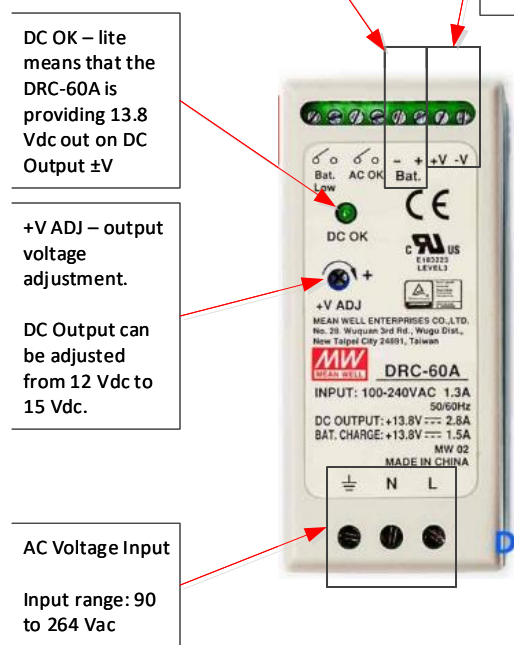
Anatomy of a Dual Port PoE UPS Enclosure System



Power Supply with UPS Functionality

DC Output – connects to PoE injector VIN1 position
Set point is 13.8 Vdc ± 0.2 Vdc

Battery Connections

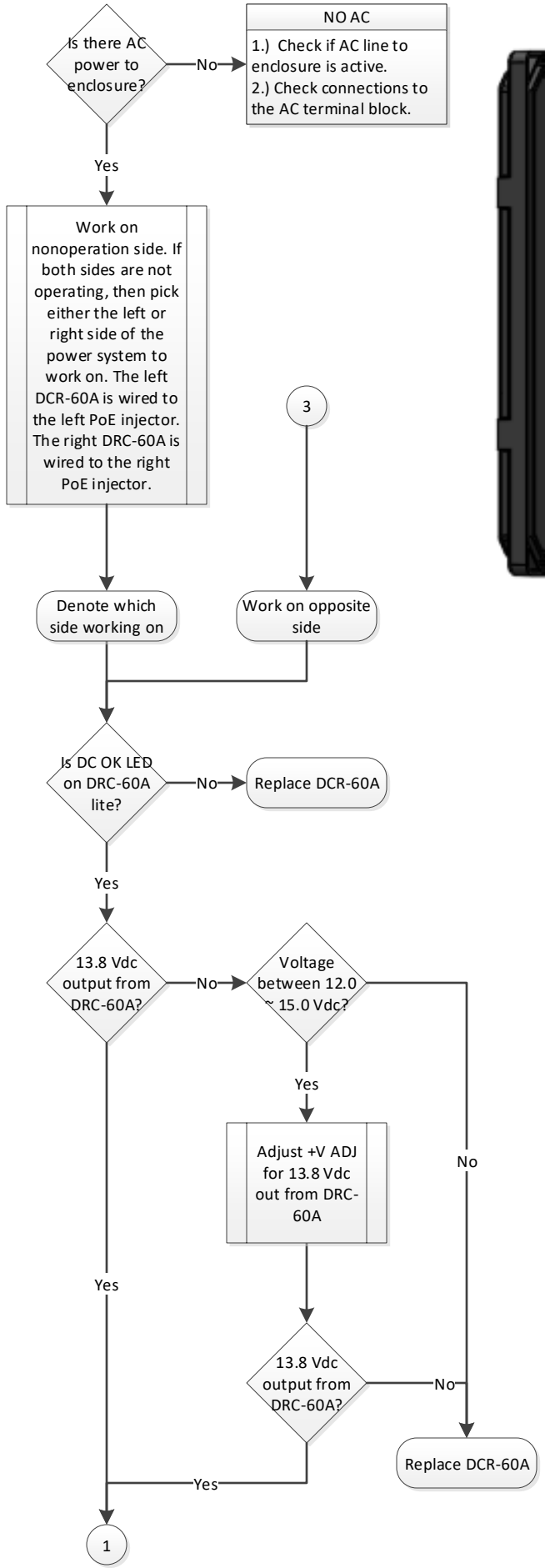


DC OK – lite means that the DRC-60A is providing 13.8 Vdc out on DC Output ±V

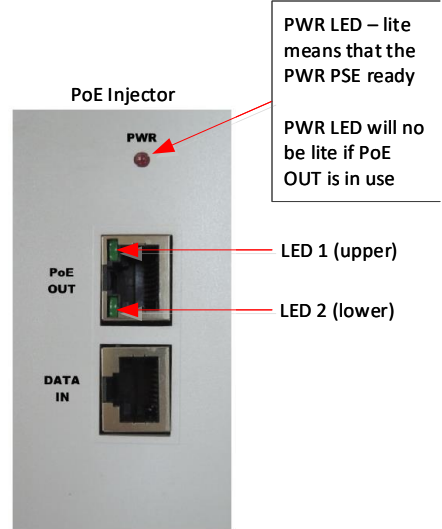
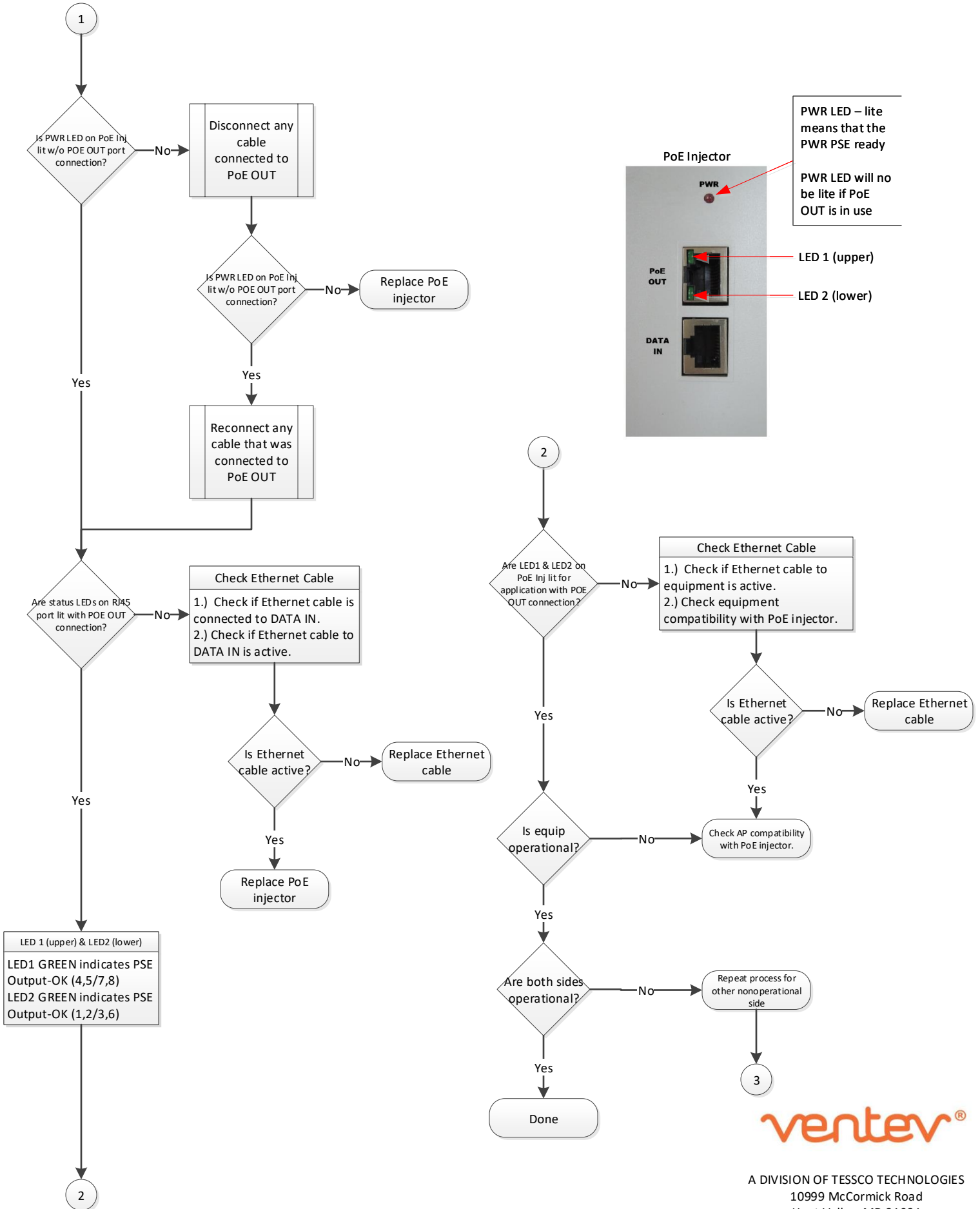
+V ADJ – output voltage adjustment.

DC Output can be adjusted from 12 Vdc to 15 Vdc.

AC Voltage Input
Input range: 90 to 264 Vac



Troubleshooting Guide for Dual Port PoE UPS Enclosure System



PWR LED – lite means that the PWR PSE ready
PWR LED will no be lite if PoE OUT is in use

LED 1 (upper)
LED 2 (lower)