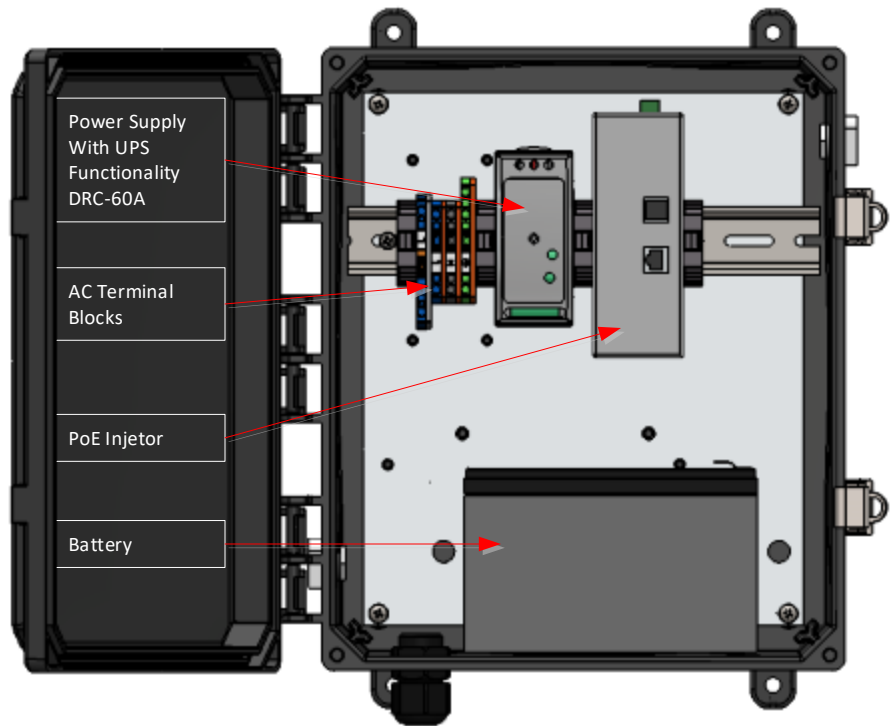
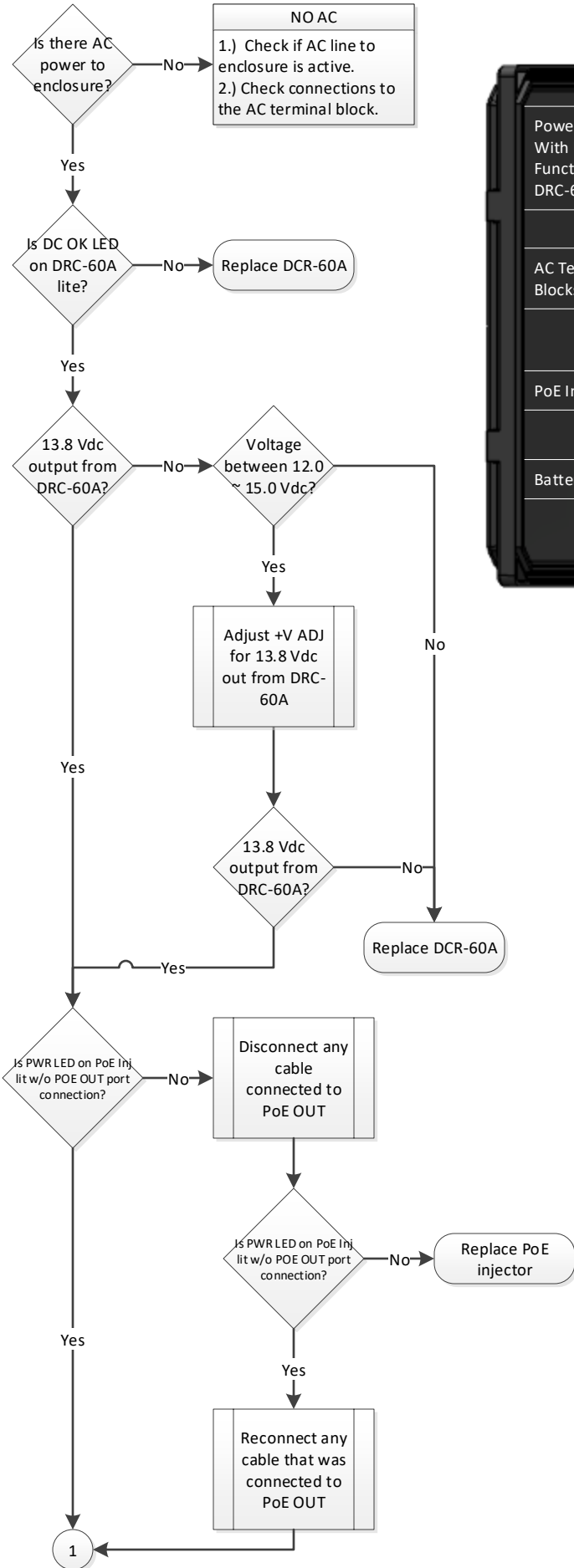


Troubleshooting Guide for Single Port PoE UPS Enclosure System

Anatomy of a Single Port PoE UPS Enclosure System



Power Supply with UPS Functionality



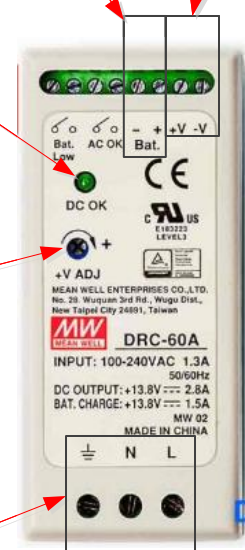
DC Output – connects to PoE injector VIN1 position
Set point is 13.8 Vdc ± 0.2 Vdc

Battery Connections

DC OK – lite means that the DRC-60A is providing 13.8 Vdc out on DC Output ±V

+V ADJ – output voltage adjustment.
DC Output can be adjusted from 12 Vdc to 15 Vdc.

AC Voltage Input
Input range: 90 to 264 Vac



A DIVISION OF TESCO TECHNOLOGIES
10999 McCormick Road
Hunt Valley, MD 21031
EMAIL: sales@ventev.com
TOL FREE: 800-851-4965

Troubleshooting Guide for Single Port PoE UPS Enclosure System

