



ventev®

PRODUCTS & SOLUTIONS FOR  
**Wireless Carriers & Integrators**



# Ventev Products Connect, Protect, and Enable™ Wireless Networks

Ventev carries comprehensive selections of antennas, enclosures, power systems, cables, brackets, and accessories to help improve wireless deployments. From small cells to tower sites, work with Ventev to connect, protect, and enable™ your next project.

## Low-PIM Antennas & Accessories

Ventev offers a broad portfolio of ultra-wideband low-PIM antennas and passive accessories. Our products are of high quality high performance and trusted by carriers, neutral hosts, and integrators in deploying reliable commercial cellular and mission-critical public safety DAS networks.

## Cable

Ventev offers high-performance, low-PIM cable assemblies. These U.S.-made, quick-turn coax cable assemblies reduce the time and effort of field terminating bulk cable.

## Enclosures & Power Systems

Ventev's line of enclosures and power solutions protect critical wireless equipment and provide auxiliary power to support outdoor wireless applications.



## Outdoor DAS & CBRs Antennas



**Ultra-Wideband Directional Antenna 617-6000 MHz, SISO, Low-PIM, 1 Connector**

*N-Female Option: 603040  
MFG Part #: VN-VLHM6-XDNF  
4.3-10 Female Option: 603044  
MFG Part #: VN-VLHM6-XD4F*



**Ultra-Wideband Directional Antenna 617-6000 MHz, 2x2 MIMO, Low-PIM**

*N-Female Option: 603041  
MFG Part #: VN-XLHM6-XDNF  
4.3-10 Female Option: 603045  
MFG Part #: VN-XLHM6-XD4F*



**617-698/698-960/1710-2700 MHz 8.5/10/11 dBi LTE Directional Antenna with 1 N Female Connector**

*SKU 296694  
MFG Part #: M3090110D11206*



**3300-3800 MHz 14dBi CBRs Directional Antenna with 2 N Female Connectors**

*SKU 243996  
MFG Part #: T38014D20006*



**High Gain Directional Antenna 698-960 MHz, 30° Azimuth, 1 Port**

*SKU 606328  
MFG Part #: VHG-VL3015-ODNF*



**Broadband Panel Antenna 350-2700 MHz, SISO**

*SKU 603625  
MFG Part #: VP-VULH347-XDNF*



**3300-3800 MHz 9 dBi CBRs Omni Antenna with 2 N Female Connectors**

*SKU 203213  
MFG Part #: T380190O20006*



**Ultra-Wideband Omnidirectional Antenna 2x2 MIMO 617-6000 MHz, Mast Mount**

*SKU 601170  
MFG Part #: VI-U2OM-NF*



# Indoor DAS Antennas



**617-4000 MHz 3/4/5 dBi DAS Omnidirectional Antenna with 2 Connectors**

N-Female Option: 214364  
 MFG Part #: M3030050O20006CB  
 4.3-10 Female Option: 223978  
 MFG Part #: M3030050O20049CB



**617-6000 MHz 4/5/6/6/6 dBi CBRS/DAS Omni Antenna with 2 Connectors**

N-Female Option: 284602  
 MFG Part #: M3030050O20006LP  
 4.3-10 Female Option: 214714  
 MFG Part #: M3030050O20049LP



**617-6000 MHz 4/5/6/7 dBi DAS Omnidirectional Antenna with 1 Connector**

N-Female Option: 225032  
 MFG Part #: M3030050O10006CB  
 4.3-10 Female Option: 288479  
 MFG Part #: M3030050O10049CB



**Ultra-Wideband Directional Antenna 617-6000 MHz, SISO, Low-PIM, 1 Connector**

N-Female Option: 603040  
 MFG Part #: VN-VLHM6-XDNF  
 4.3-10 Female Option: 603044  
 MFG Part #: VN-VLHM6-XD4F



**Ultra-Wideband Directional Antenna 617-6000 MHz, 2x2 MIMO, Low-PIM**

N-Female Option: 603041  
 MFG Part #: VN-XLHM6-XDNF  
 4.3-10 Female Option: 603045  
 MFG Part #: VN-XLHM6-XD4F



**350-6000 MHz 3.5/4.5 dBi Ultrawide Band Slim SISO Omnidirectional Antenna with 1 N Female Connector**

SKU 202727  
 MFG Part #: VC-HUHM6-IONF



**In-Building Omni Antenna SISO 132-960 MHz, 1x N-Female**

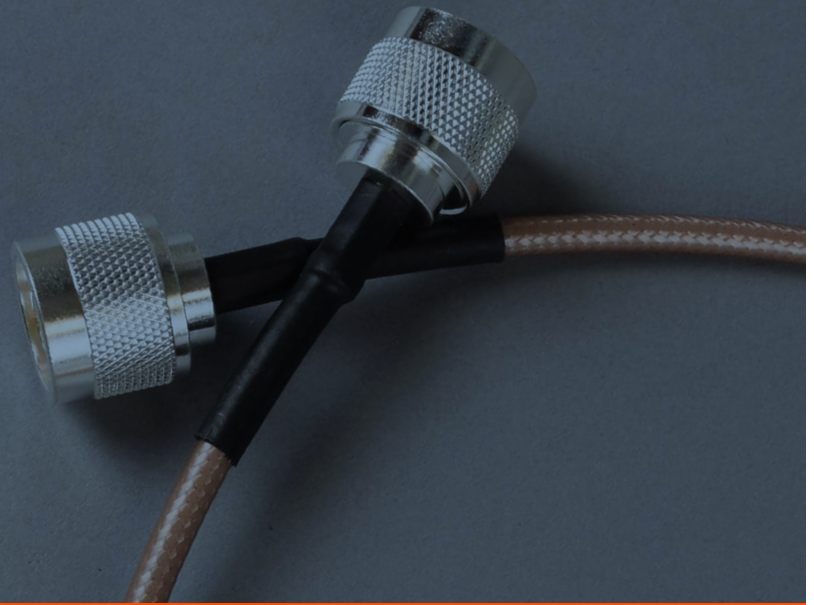
SKU 605237  
 MFG Part #: VP-VVULCO113-NF



**698-960/1710-2700 MHz 5/7 dBi DAS Directional (H:95/75, V:100/70) Antenna with 1 N Female Connector**

SKU 399654  
 MFG Part #: M3050070O11206

# Cable



**3.2 ft TFT-402 Series Cable Assembly with 4.3-10 Female - 4.3-10 Male Connector**

SKU 205033  
MFG Part #: P2RFC-2422-39



**3.2 ft TFT-402-LF Series Cable Assembly with N Male - N Male Connectors**

SKU 249632  
MFG Part #: P2RFC-2064-39



**1.5 ft RET Control Cable with AISG Male - N Female Connectors**

SKU 283095  
MFG Part #: DSH-RET-0.5M



**3 ft RET Control Cable with AISG Male - N Female Connectors**

SKU 260414  
MFG Part #: DSH-RET-1M



**6 ft RET Control Cable with AISG Male - N Female Connectors**

SKU 241851  
MFG Part #: DSH-RET-2M



**9 ft RET Control Cable with AISG Male - N Female Connectors**

SKU 247702  
MFG Part #: DSH-RET-3M



**15 ft RET Control Cable with AISG Male - N Female Connectors**

SKU 223474  
MFG Part #: DSH-RET-5M



**30 ft RET Control Cable with AISG Male - N Female Connectors**

SKU 261386  
MFG Part #: VNV-RET-M-F 30FT

## CABLE ASSEMBLY FINDER

Looking for something specific or unique? Use our downloadable Cable Assembly Finder to discover the jumper you need fast!

[CABLE ASSEMBLY FINDER](#)

# Passive Accessories

## TAPPERS

3 to 30 dB, Ultra-Low PIM, Available in N-F & 4.3-10 F Connectors



**350-5930 MHz, 3 dB, Low PIM Tapper with 4.3-10 Female Connector**

SKU 296874

MFG Part #: VEN-03TAP-360-4F



**350-5930 MHz, 10 dB, Low PIM Tapper with 4.3-10 Female Connector**

SKU 255088

MFG Part #: VEN-10TAP-360-4F



**350-5930 MHz, 15 dB, Low PIM Tapper with 4.3-10 Female Connector**

SKU 228165

MFG Part #: VEN-15TAP-360-4F

## ATTENUATORS

3 to 30 dB, 5 W Power Rating



**3 dB DC-6000 MHz RF Coaxial Attenuator with N Male to N Female Connector**

SKU 288714

MFG Part #: VEN-A0506-03-NMF



**10 dB DC-6000 MHz RF Coaxial Attenuator with N Male to N Female Connector**

SKU 230412

MFG Part #: VEN-A0506-10-NMF



**30 dB DC-6000 MHz RF Coaxial Attenuator with N Male to N Female Connector**

SKU 294203

MFG Part #: VEN-A0506-30-NMF

## RF SURGE ARRESTORS



**0-7 GHz Lightning Arrestor with N Female to N Female Bulkhead Connectors**

SKU 220738

MFG Part #: V-LP-N-J-BHJ



**0-7 GHz Lightning Arrestor with N Male to N Female Bulkhead Connectors**

SKU 244581

MFG Part #: V-LP-N-P-BHJ

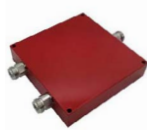


**0-6 GHz Lightning Arrestor with SMA Female to SMA Bulkhead Female Connectors**

SKU 384159

MFG Part #: TW-LP-SMA-J-BHJ

## SPLITTERS



**Public Safety Power Splitter 138-960 MHz, 50W, N-Female 2-way Splitter**

SKU 604516

MFG Part #: VEN-S196-2-NF



**350-5930 MHz, 15 dB, Low PIM Tapper with 4.3-10 Female Connector**

SKU 298697

MFG Part #: VEN-2W-RPD6G-NF



# Enclosures



**24x24x10 basic enclosure with back panel**

SKU 319854  
MFG Part #: V242410-L-O



**14x12x6 NEMA Enclosure with Solid Door, Latch Lock**

SKU 215212  
MFG Part #: V14126LO-BASIC-T



**18x16x10 basic enclosure with back panel**

SKU 513872  
MFG Part #: UV181610LO-BASIC



**DIN Rails for 24x24x10 enclosure**

SKU 516892  
MFG Part #: DIN-24



**DIN Rails for 18x16x10 enclosure**

SKU 388653  
MFG Part #: DIN-10



**DIN Rails for 14x12x6 enclosure**

SKU 308861  
MFG Part #: DIN-12

# Power Systems



**Power Extender with Single PoE+  
for Light Poles with Intermittent  
Power 120/240 VAC**

SKU 553902  
MFG Part #: PWR-XTDR-VNV204



**26" x 27" x 12" Aluminum NEMA  
Enclosure with Solid Door,  
Latch Locks**

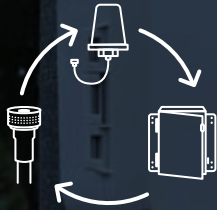
SKU 353340  
MFG Part #: 707170



**36" x 28" x 22" NEMA 3R  
Universal Broadband Enclosure**

SKU 231866  
MFG Part #: VL36-48-0700-105B

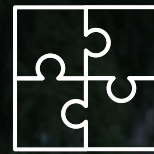
# WHY CHOOSE **ventev**<sup>®</sup>



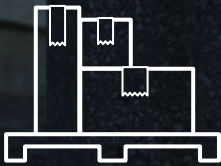
Industry-leading product lines that provide a comprehensive ecosystem of wireless products



Products for every major radio/AP covering Wi-Fi, DAS, CBRS, LTE, SCADA, & two-way



Easy-to-install & Pre-configured, fully integrated solutions



Large inventory of products, ready to ship



Professional product training & educational materials



Customer support with exceptional product and industry knowledge

After you choose the radio



choose **ventev**<sup>®</sup>

For more information

visit [ventevinfra.com](http://ventevinfra.com),  
call 800-851-4965,  
or email [sales@ventev.com](mailto:sales@ventev.com)