

# 2.4/5/6 GHz 6 dBi Wi-Fi Patch Antenna

with 8 RPTNC Male Connectors and  
Articulating Mount

ventev®

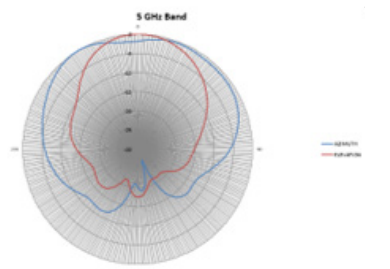
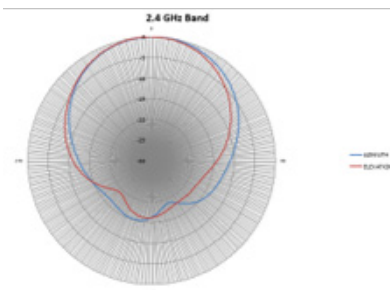
Connect, Protect, and Enable™

Ventev's Multi-Mounted WiFi Patch Antenna with 8 RPTNC Male Connectors offers outstanding Wi-Fi performance in a small form factor design making it ideal for applications where performance and aesthetics are equally important. The antenna can be mounted to the ceiling and also includes a Medium Strength Articulating Mount that articulates horizontally and vertically for precise positioning.

## Specifications

SKU	219521
Manufacturer Part Number	M6060060P1D83602S
Operating Frequency Range	2.4/5/6 GHz
Gain	6 dBi
Polarization	4 x Horizontal, 4 x Vertical
Vertical Beamwidth	80° / 50°
Horizontal Beamwidth	80° / 120°
VSWR	≤ 2.0
Nominal Impedance	50 Ohms
Max Input Power	50 W
Number of Ports	8
Length of Lead	36 in
RF Connector	RPTNC Male
Application	Indoor / Outdoor
Dimensions	9 x 4.4 x 1.2 in
Weight	3.30 lbs.
Mounting Style	Ceiling / Pole / Mast / Wall Mount
Radome Color/Material	White UV Resistant ABS
Bandwidth	100 / 1975 MHz
Front-to-back Ratio	10 / 15 dBi
Isolation	≥ 12 / ≥ 18

## Radiation Patterns



All product specifications are  
subject to change without notice  
or obligation.

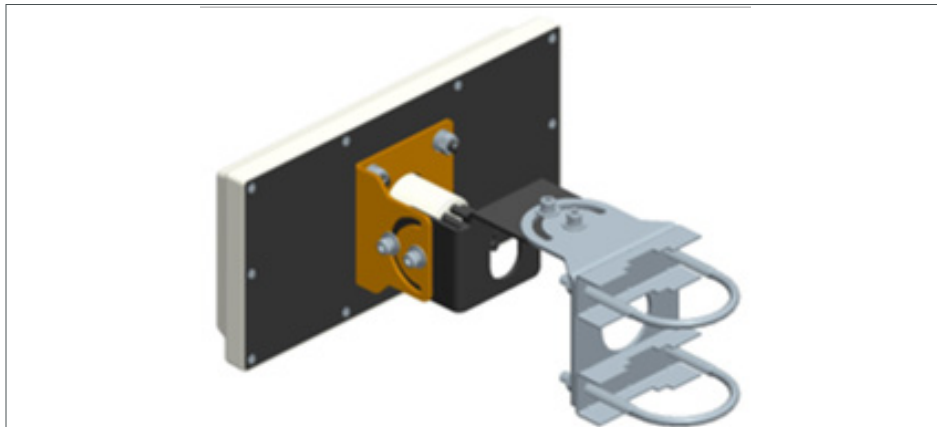
# 2.4/5/6 GHz 6 dBi Wi-Fi Patch Antenna

with 8 RPTNC Male Connectors and  
Articulating Mount

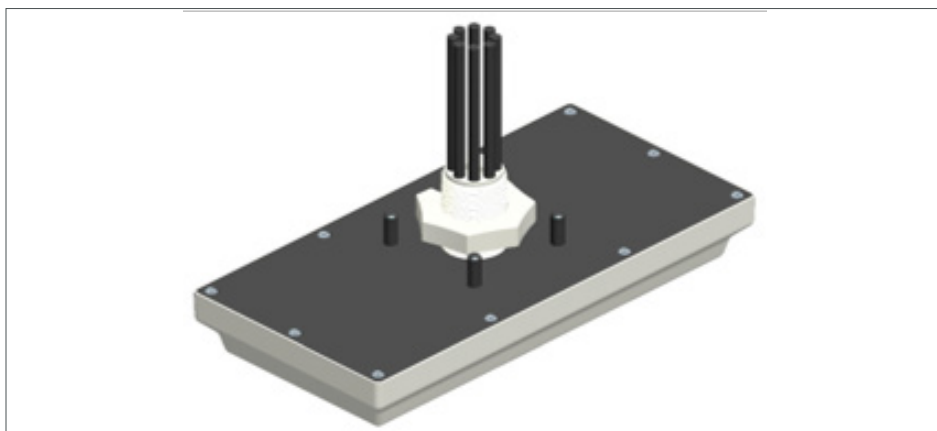
ventev®

Connect, Protect, and Enable™

## Mount Information



*Image Title: Pole/Mast Mount*



*Image Title: Ceiling Mount*



*Image Title: TW-ART-MOUNT-MS*



All product specifications are  
subject to change without notice  
or obligation.

# 2.4/5/6 GHz 6 dBi Wi-Fi Patch Antenna

with 8 RPTNC Male Connectors and  
Articulating Mount

## Mount Specifications

Model	TW-ART-MOUNT-MS
Dimensions	6 x 3 x 3 in
Material	Aluminum
Operating Temperature Range	-40° to 158°F
Mounting Options	Pole or Wall Mount
Mast Diameter	2.125 to 2.5 in
Maximum Load	25 lbs.
Wind Speed Range	≤ 100 mph

*\*NOTE: Max load is a combination of antenna weight and wind strength.*



All product specifications are  
subject to change without notice  
or obligation.