

# 2.4 GHz 12 dBi Wi-Fi Fiberglass Omnidirectional Antenna with Side Mount and 1 N Female Connector

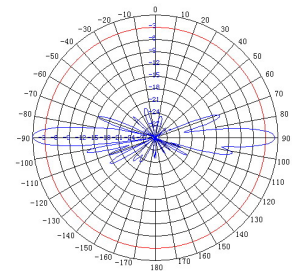
Ventev's 12 dBi fiberglass omnidirectional antenna is designed for indoor and outdoor 2.4 GHz wireless local area networks. It features UV stabilized radome that provides ultimate sustainability against extreme weather conditions such as high temperature, strong winds and rain. Includes a sturdy side mount for convenient mast or wall mounting.

## Specifications

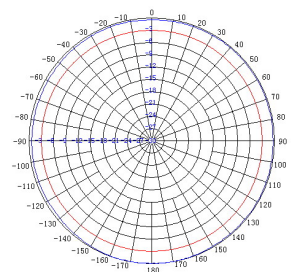
SKU	331256
Manufacturer Part Number	T241200100065
Operating Frequency Range	2.4 GHz
Gain	12 dBi
Polarization	Vertical
Vertical Beamwidth	7°
Horizontal Beamwidth	360°
VSWR	≤ 1.5
Nominal Impedance	50 Ohms
Max Input Power	100 W
Number of Ports	1
RF Connector	N Female
Application	Indoor/Outdoor
Operating Temperature	-22° to 158°F
Weight	0.98 lb.
Wind Load	120 mph
Radome	White Fiberglass



## Radiation Patterns



E Plane



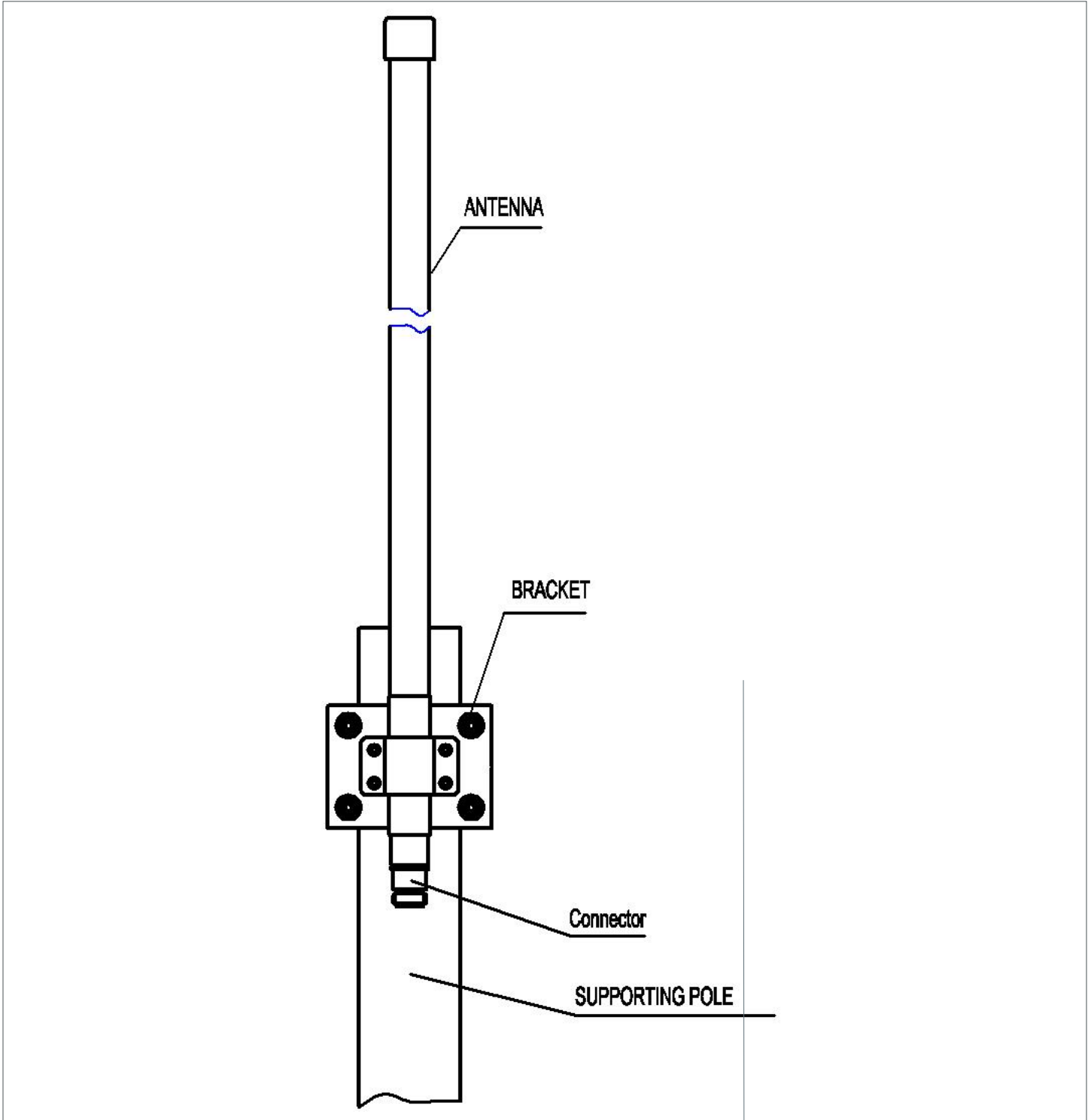
H Plane



All product specifications are subject to change without notice or obligation.

# 2.4 GHz 12 dBi Wi-Fi Fiberglass Omnidirectional Antenna with Side Mount and 1 N Female Connector

## Mount Information



All product specifications are subject to change without notice or obligation.