

2.4/5 GHz 6 dBi Wi-Fi Patch Antenna

with 5 RPTNC Male Connectors

ventev®

Connect, Protect, and Enable™

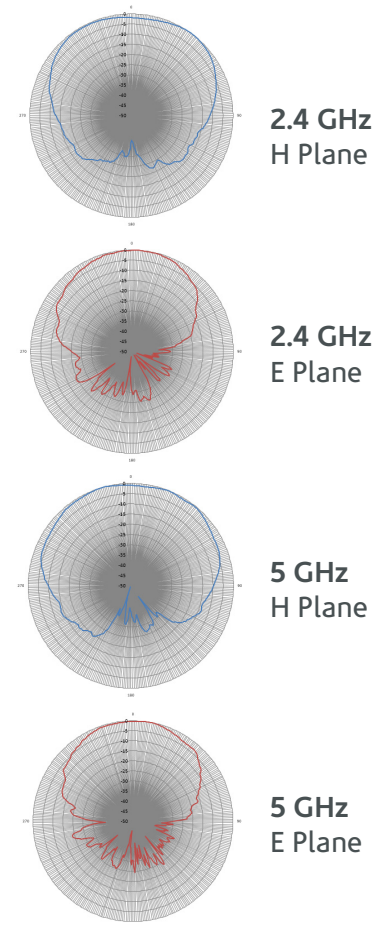
Ventev's 2.4/5 GHz 6 dBi directional antenna features five dual-band antennas in a single unit, where each pigtail is 2.4 and 5 GHz. This solution allows engineers to simplify deployments by using only one antenna for dual band access points.

Specifications

SKU	214484
Manufacturer Part Number	M6060060P1D536D02
Operating Frequency Range	2.4/5 GHz
Gain	6 dBi
Polarization	Vertical
Vertical Beamwidth	60°/70°
Horizontal Beamwidth	105°/125°
VSWR	≤2.0
Nominal Impedance	50 Ohms
Max Input Power	20 W
Number of Ports	5
Length of Lead	36 in
RF Connector	RPTNC Male
Application	Indoor/Outdoor
Operating Temperature	-40° to 158°F
Dimensions	10 x 5.6 x 1.4 in
Weight	1.20 lbs.
Wind Load	60 mph
Isolation	≥ 20 dB
Bandwidth	100/100 MHz



Radiation Patterns

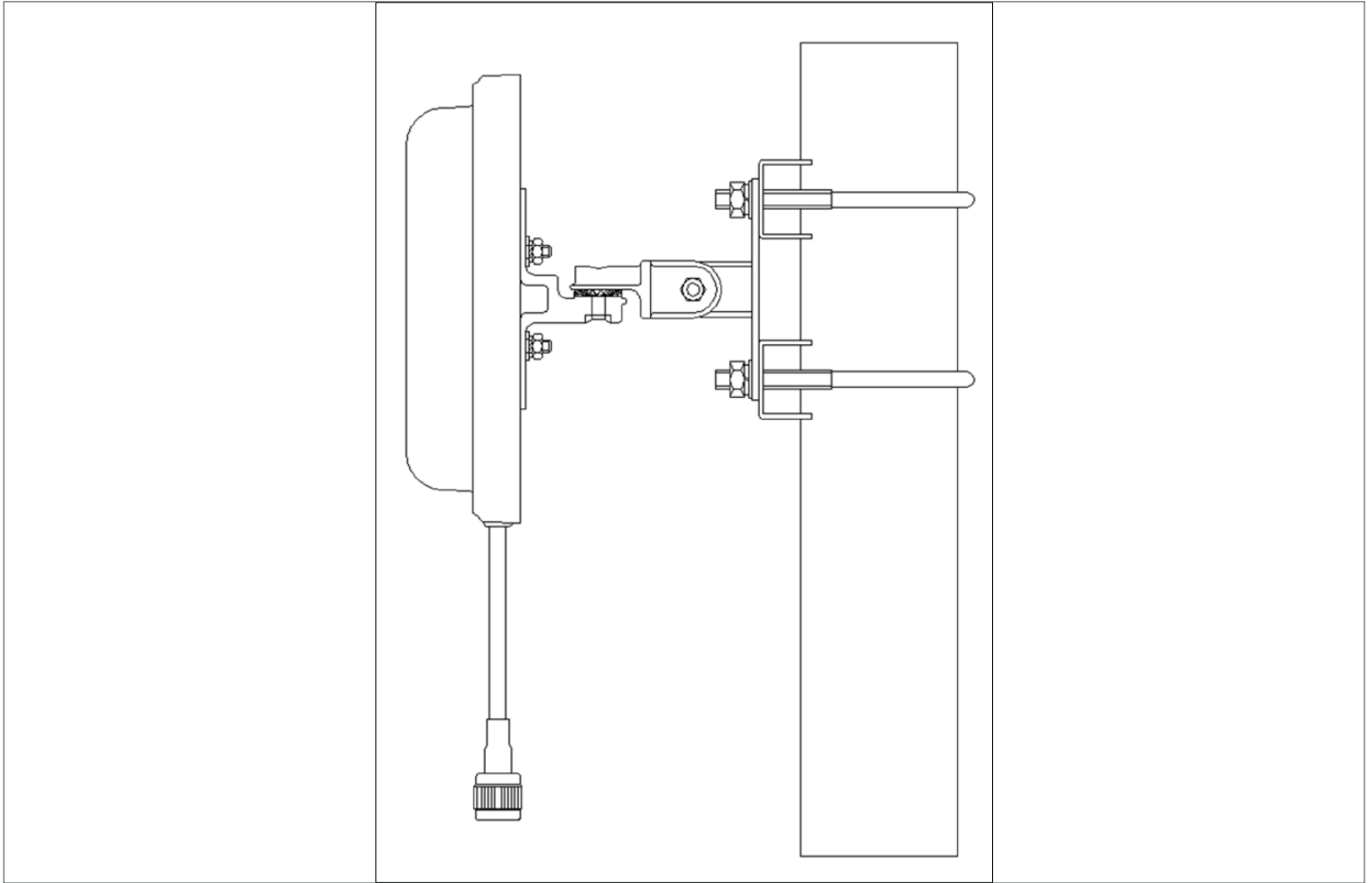


All product specifications are subject to change without notice or obligation.

2.4/5 GHz 6 dBi Wi-Fi Patch Antenna

with 5 RPTNC Male Connectors

Mount Information



Installation Instructions

- Place the bracket on the back of the panel antenna. Attach the antenna to the mast.
- Use the client to test and adjust the receive signal strength (RSSI) and adjust the azimuth and elevation to maximize the RSSI. Tighten each nut and seal the antenna connector.



All product specifications are subject to change without notice or obligation.