

Wi-Fi Right Angle Wall Bracket

Ventev's Wi-Fi Right Angle Bracket is designed to provide optimal Wi-Fi coverage indoors. The mount fits most indoor access points and provides maximum protection from dust and tampering without RF interference. Ideal for warehouses, hospitals, campuses, and universities. Easy to deploy and ensures safe and reliable installation.

Available Models

Description	MFG Part #	SKU
Bracket With Lid	TW-HWM-C-CVR	521473
Bracket Without Lid	TW-HWM-C-NC	538527

Specifications

Application	Indoor
Dimensions	9.21 x 7.11 x 5.24 in.
Weight	With Lid: 2.845 lbs. Without Lid: 1.75 lbs.
Mounting Options	Wall
Construction	Powder coated steel



Features & Benefits

- Mounts to wall surface or secures directly to a single gang electrical box.
- Aesthetically pleasing mount for most wireless access points.
- Mounts access point horizontally for improved performance.
- Rigid base design for improved durability.
- Right Angle Bracket with cover conceals cabling and data outlet.
- Cover swings down for access to access point and cables.
- Reduces installation and maintenance time as well as costs.
- Lightweight, low profile design.



All product specifications are subject to change without notice or obligation.

Wi-Fi Right Angle Wall Bracket

ventev®

Connect, Protect, and Enable™

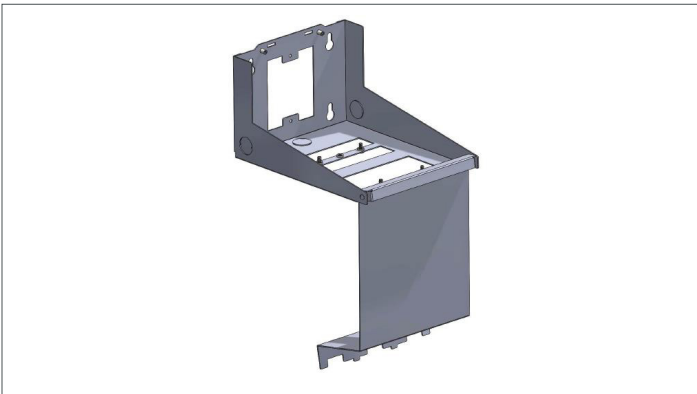
Mount Information



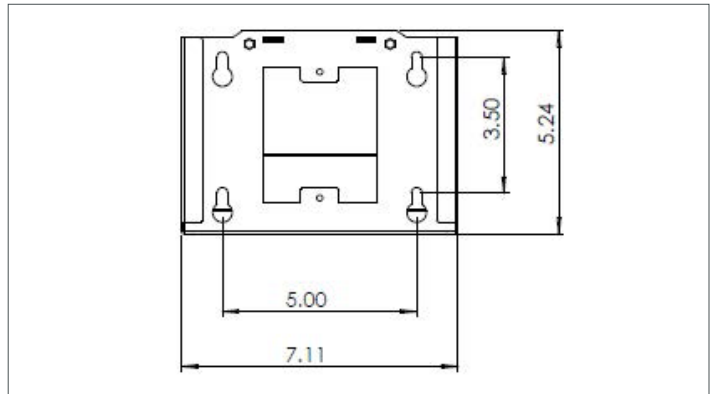
Wi-Fi Right Angle Bracket: With lid



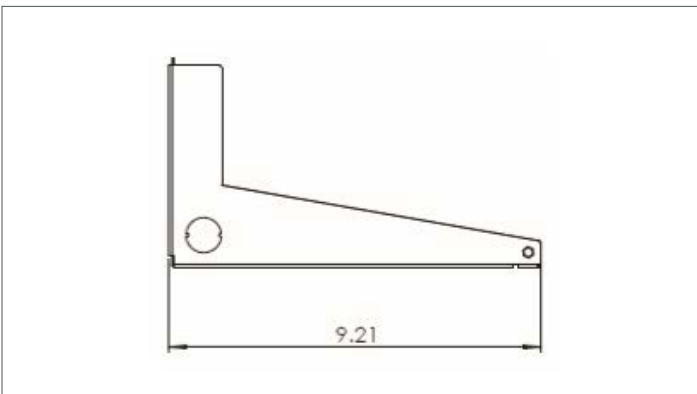
Wi-Fi Right Angle Bracket: Without lid



With Lid/Cover Open



Back View



Side View



All product specifications are subject to change without notice or obligation.