

TerraWave® 2.4/5 GHz 6 dBi Small Form Factor Nano Patch Antenna

with 4 Dual Band Leads & RPTNC Plug Connectors

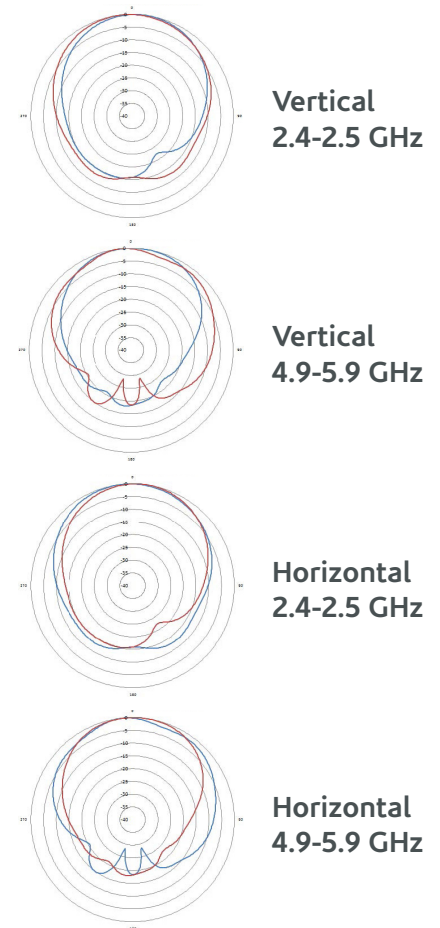
Ventev's TerraWave® 2.4/5 GHz 6 dBi Small Form Factor Nano Patch Antenna delivers outstanding Wi-Fi performance in a very small package and is ideal for space constrained environments or environments that place a premium on aesthetics. The versatile Nano patch antenna is for use indoors and is primarily designed for use with Cisco 2602e, 2702e, 3602e, 3702e, and 3802e access points. It can be mounted on walls or ceiling tiles.

Specifications

SKU	582185
Manufacturer Part Number	M6060060D3D3602N
Operating Frequency Range	2400~2484/4900~5885 MHz
Gain	6 dBi
Bandwidth	100/985 MHz
Polarization	2 x Horizontal, 2 x Vertical
Vertical Beamwidth	90° ± 10°
Horizontal Beamwidth	85° ± 15°
VSWR	2:1 Nominal / 2:1 Nominal
Nominal Impedance	50 Ohms
Front-to-Back Ratio	9/13 dBi
Max Input Power	20 W
Number of Ports	4
RF Connector	RPTNC
Pigtail	3 ft.
Mounting Options	Wall or Ceiling
Application	Indoor
Dimensions	4 x 4 x 1 in.
Construction	PCABS
Color	Bronze



Radiation Patterns

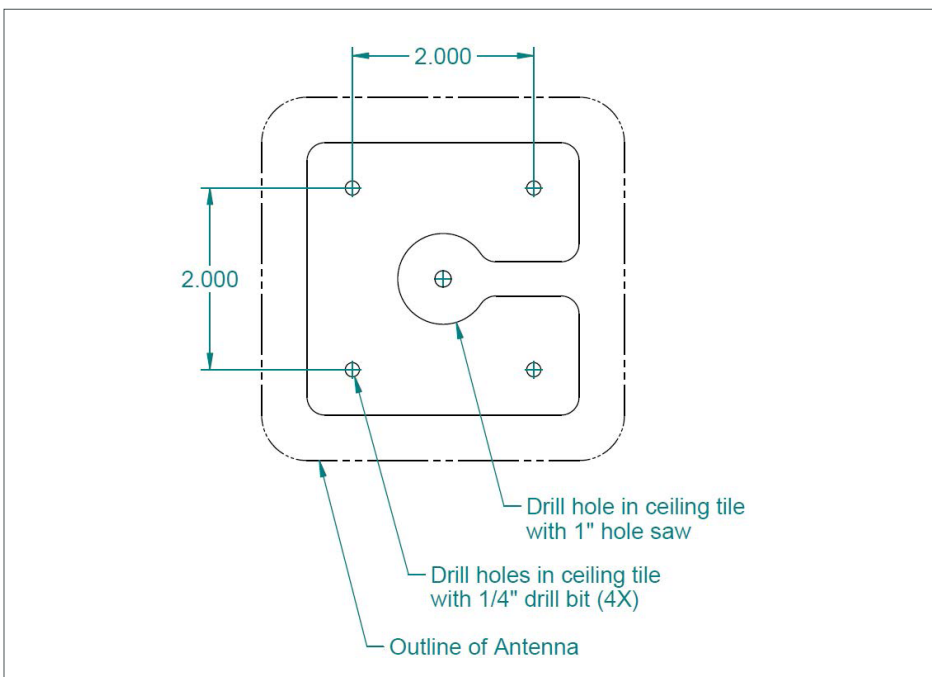
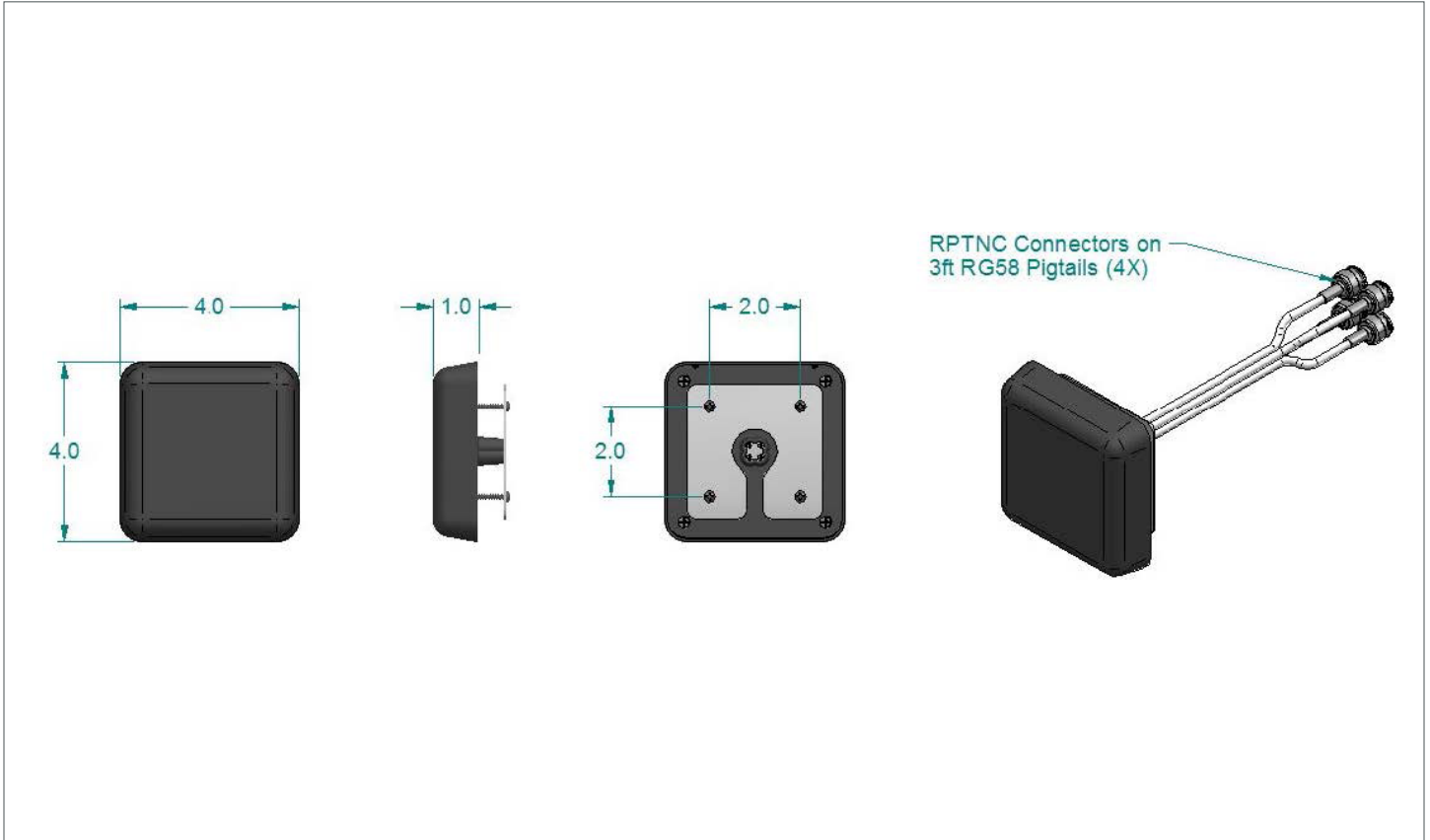


All product specifications are subject to change without notice or obligation.

TerraWave® 2.4/5 GHz 6 dBi Small Form Factor Nano Patch Antenna

with 4 Dual Band Leads & RPTNC Plug Connectors

Mount Information



All product specifications are subject to change without notice or obligation.