

TerraWave® 2.4/5 GHz 13 dBi Wi-Fi Patch Antenna

with 4 N-Female Connectors

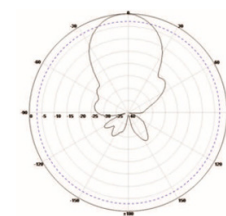
Ventev's TerraWave® high-density 2.4/5 GHz 13 dBi Patch Antenna is designed for wireless networks operating in the 2.4 GHz and 5 GHz frequency range in both indoor and outdoor applications. The antenna uses a narrow 35° beamwidth at 2.4/5 GHz, minimizing channel-to-channel interference which in turn leads to increased capacity. Specifications include vertical polarization, 50 Ohm, 2.0 VSWR, along with 50 W maximum input power.

Specifications

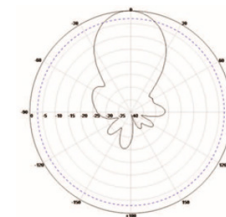
SKU	205266
Manufacturer Part Number	M6130130MP1D3607D
Operating Frequency Range	2.4/5 GHz
Polarization	Vertical/Horizontal
Horizontal Beamwidth	35°
Vertical Beamwidth	35°
Gain	13 dBi
VSWR	≤ 2.0
Max Input Power	50 W
Nominal Impedance	50 Ohms
Bandwidth	100/700 MHz
Isolation	≥ 28 dB
Number of Ports	4
RF Connector	N-Female
Application	Indoor/Outdoor
Operating Temperature	-22° to 158°F
Dimensions	14.96 x 14.96 x 1.3 in.
Weight	7.44 lbs.
Mounting Options	Mast
Pole Diameter	1.97 x 4.7 in.



Radiation Patterns



2.4 GHz



5 GHz

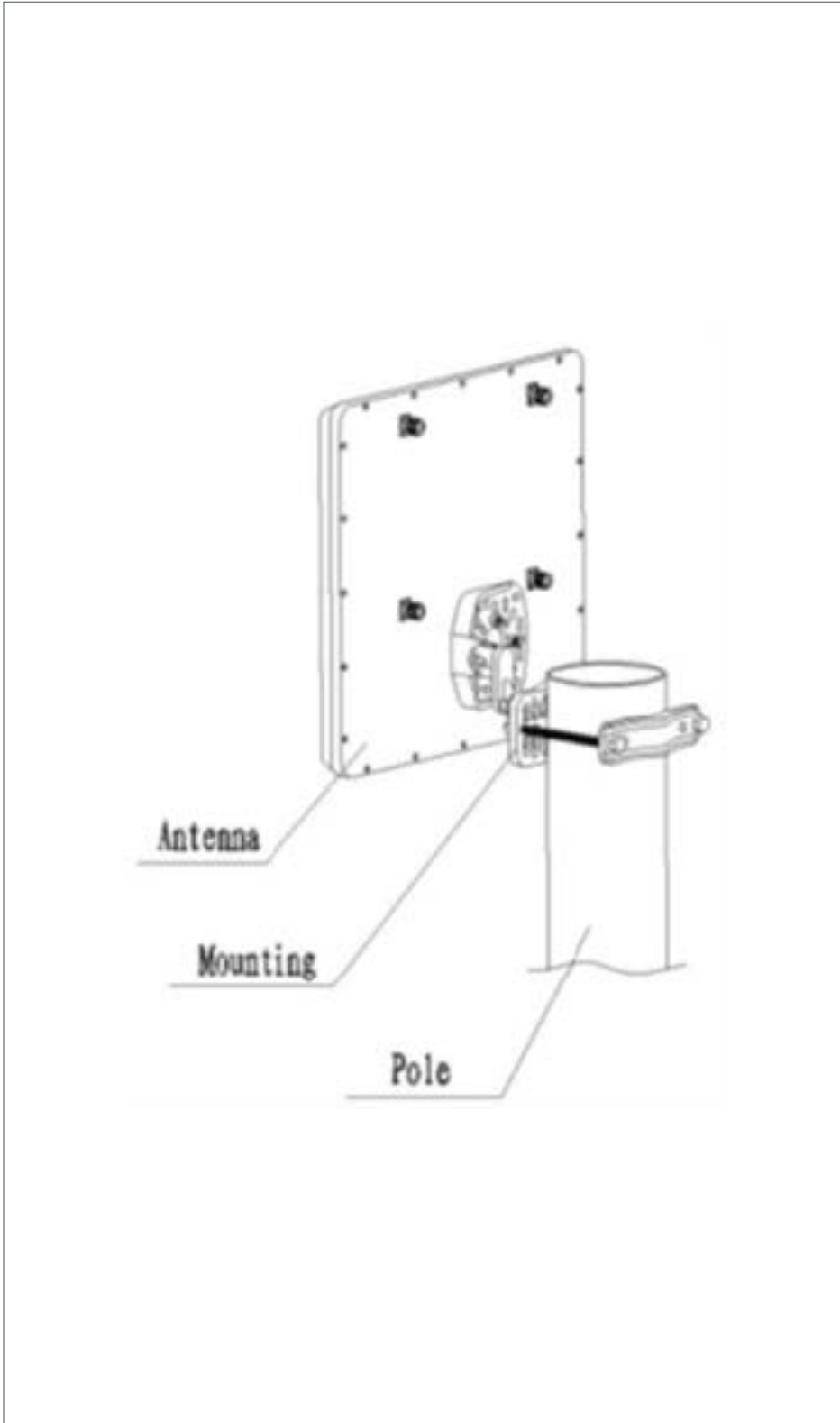


All product specifications are subject to change without notice or obligation.

TerraWave® 2.4/5 GHz 13 dBi Wi-Fi Patch Antenna

with 4 N-Female Connectors

Mount Information



All product specifications are subject to change without notice or obligation.