

TerraWave® 2.4/5 GHz 6 dBi Wi-Fi MIMO Omnidirectional Antenna

with 6 RPTNC Male Connectors

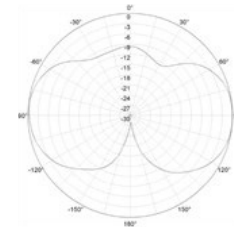
Ventev's TerraWave® 6 dBi outdoor multiple-input and multiple-output (MIMO) omnidirectional antenna has dual-band leads to support both 2.4 and 5 GHz, making it an ideal and aesthetically pleasing antenna to support demanding outdoor applications. The rugged enclosure makes this antenna perfectly suited for use in a warehouse or manufacturing environment where it must withstand exposure to moisture and dust. Includes an L-Bracket for mast and or wall mounting.



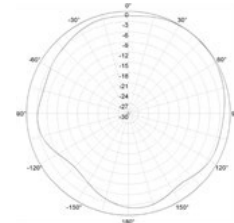
Specifications

SKU	316571
Manufacturer Part Number	M6060060MO1D36020
Operating Frequency Range	2.4/5 GHz
Polarization	Vertical
Horizontal Beamwidth	360°
Vertical Beamwidth	35°/25°
Gain	6 dBi
VSWR	≤ 1.5-2.0
Max Input Power	10 W
Nominal Impedance	50 Ohms
Bandwidth	100/700 MHz
Number of Ports	6
Length of Lead	36 in.
RF Connector	RPTNC Male
Application	Outdoor
Operating Temperature	-40° to 158°F
Dimensions	5.9 x 7 in.
Weight	3.15 lbs.
Mounting Options	Wall, Mast, or Pole
Mast Mount Diameter	1.37 x 1.97 in.

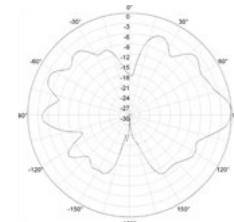
Radiation Patterns



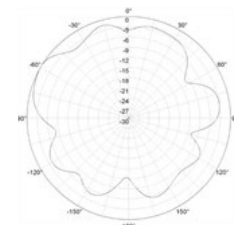
2.4 GHz
E Plane



2.4 GHz
H Plane



5 GHz
E Plane



5 GHz
H Plane

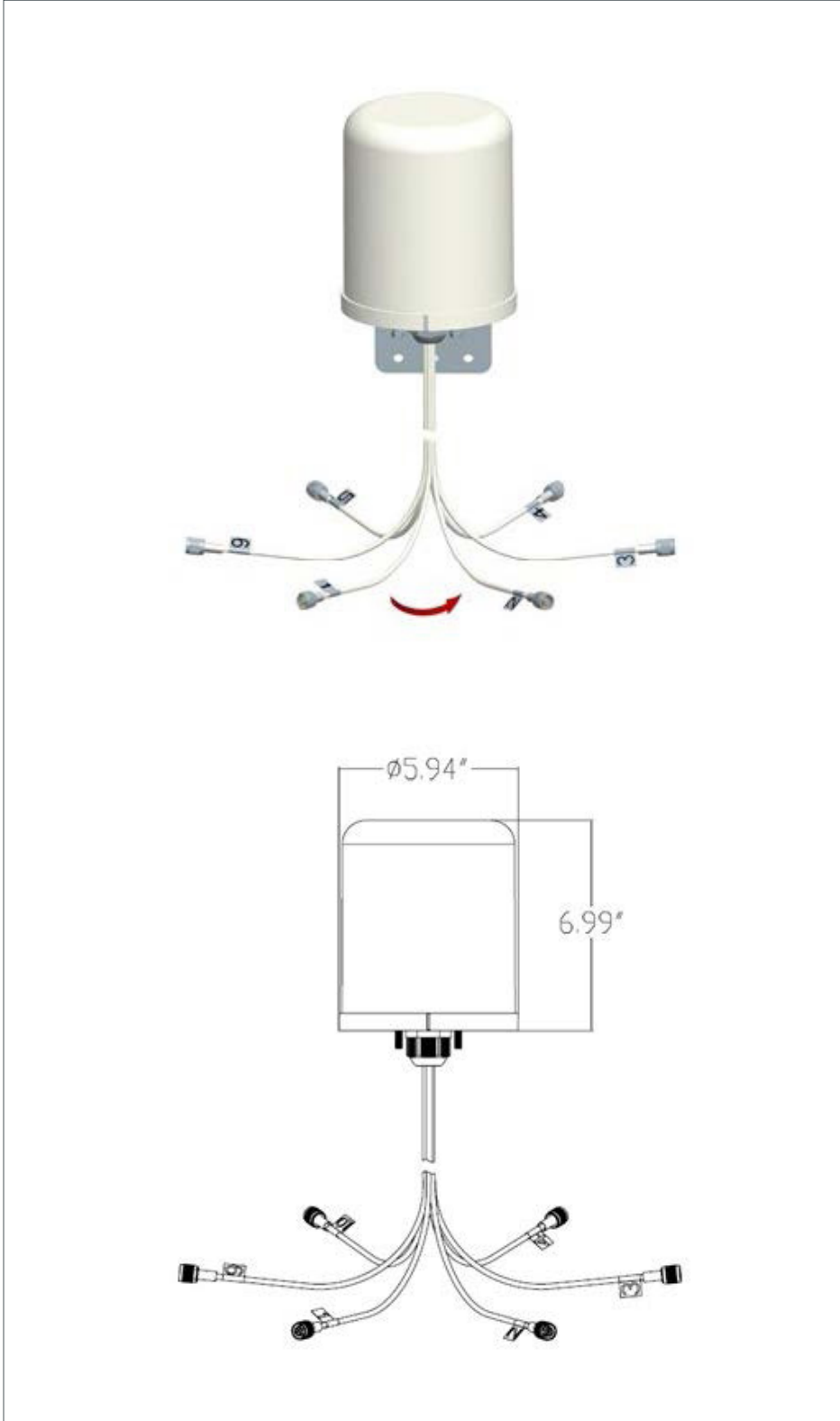


All product specifications are subject to change without notice or obligation.

TerraWave® 2.4/5 GHz 6 dBi Wi-Fi MIMO Omnidirectional Antenna

with 6 RPTNC Male Connectors

Dimensions



All product specifications are
subject to change without notice
or obligation.