

# TerraWave® 2.4/5 GHz 6 dBi Wi-Fi MIMO Omnidirectional Antenna

with 3 RPSMA Male Connectors

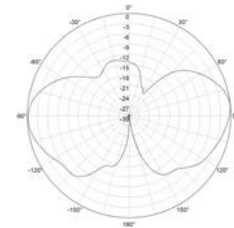
Ventev's TerraWave® 6 dBi Outdoor Multiple-Input and Multiple-Output (MIMO) Omnidirectional Antenna is designed to operate enterprise class 802.11n MIMO access points. With dual-band leads, each cable supports both 2.4 and 5 GHz, making it an ideal and aesthetically pleasing antenna to support demanding outdoor applications in next generation IEEE 802.11n wireless communication systems. The rugged enclosure makes this antenna perfectly suited for use in a warehouse or manufacturing environment where it must withstand exposure to moisture and dust. Includes an L-Bracket for mast and or wall mounting. Industrial beam clamps are available as an additional option.



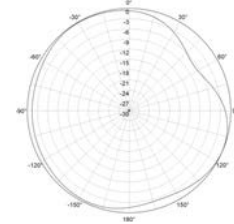
## Specifications

SKU	376872
Manufacturer Part Number	M6060060MO1D33620
Operating Frequency Range	2.4/5 GHz
Polarization	Vertical
Horizontal Beamwidth	360°
Vertical Beamwidth	35°/25°
Gain	6 dBi
VSWR	≤ 1.5-1.8
Max Input Power	10 W
Nominal Impedance	50 Ohms
Number of Ports	3
RF Connector	RPSMA Male
Application	Outdoor
Operating Temperature	-40° to 158°F
Dimensions	5.9 x 7 in.
Weight	2.64 lbs.
Mounting Options	Wall, Mast, or Pole
Mast Mount Diameter	1.37 x 1.97 in.
Wind Load	134 mph

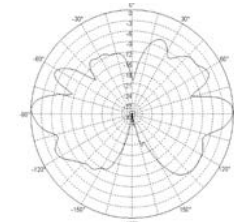
## Radiation Patterns



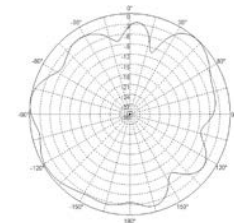
2.4 GHz  
E Plane



2.4 GHz  
H Plane



5 GHz  
E Plane



5 GHz  
H Plane

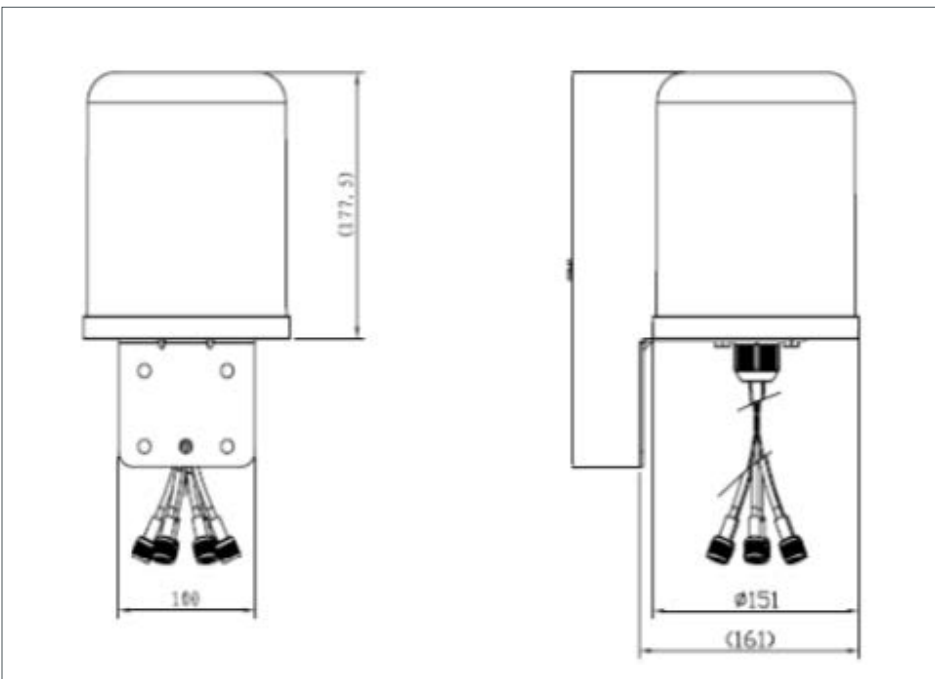
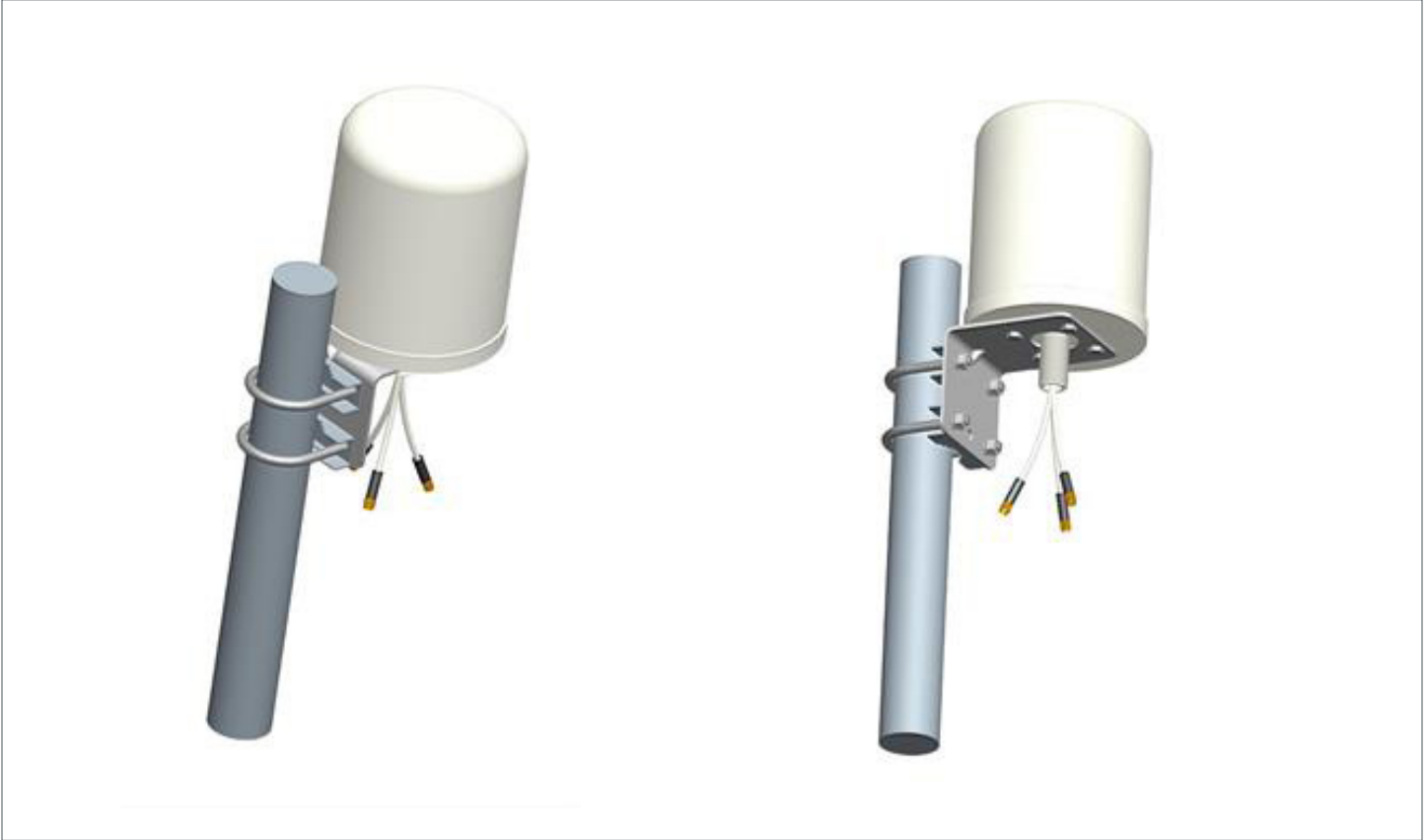


All product specifications are subject to change without notice or obligation.

# TerraWave® 2.4/5 GHz 6 dBi Wi-Fi MIMO Omnidirectional Antenna

with 3 RPSMA Male Connectors

## Antenna & Mount Information



All product specifications are  
subject to change without notice  
or obligation.