

2.4/5 GHz 14 dBi Wi-Fi Patch Antenna

with 4 N Female Connectors

ventev®

Connect, Protect, and Enable™

Ventev's High-Density 2.4/5 GHz 14 dBi Patch Antenna is designed for wireless networks operating in the 2.4 GHz and 5 GHz frequency range in both indoor and outdoor applications. The antenna uses a narrow 35-degree beamwidth at 2.4/5 GHz, minimizing channel-to-channel interference which in turn leads to increased capacity.

Specifications

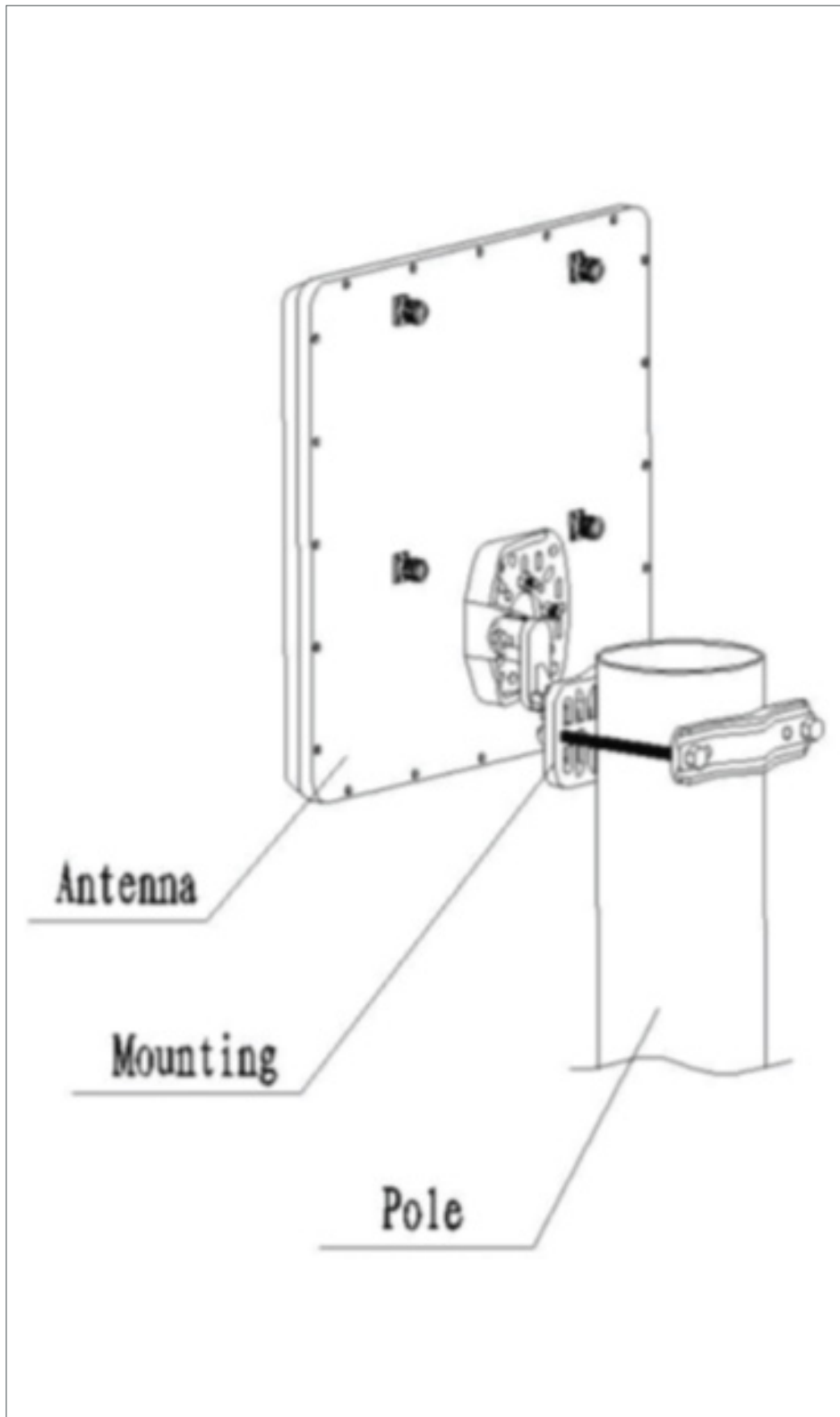
SKU	502653
Manufacturer Part Number	M6140140MP1D0006
Operating Frequency Range	2.4/5 GHz
Gain	14 dBi
Polarization	Vertical/Linear
Vertical Beamwidth	35°
Horizontal Beamwidth	35°
VSWR	≤ 2.0
Nominal Impedance	50 Ohms
Max Input Power	50 W
Number of Ports	4
RF Connector	N Female
Environment	Indoor/Outdoor
Operating Temperature	-22° to 158° F
Dimensions	14.96 x 14.96 x 1.3 in
Weight	7.50 lbs.
Isolation	≥ 28 dB
Mounting Method	Mast
Pole Diameter	1.97 x 4.7 in
Bandwidth	100/700 MHz



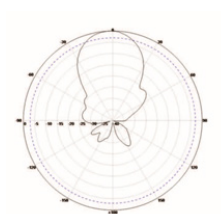
2.4/5 GHz 14 dBi Wi-Fi Patch Antenna

with 4 N Female Connectors

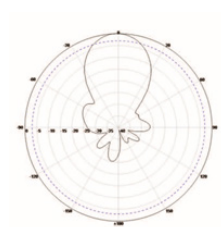
Mount Information



Radiation Patterns



H Plane



E Plane

