

TerraWave® 2.4/5 GHz 6 dBi Wi-Fi MIMO Patch Antenna

with 4 RPTNC Male Connectors

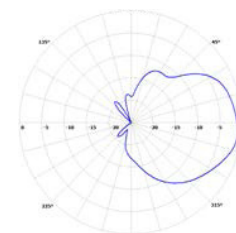
Ventev's TerraWave® 2.4/5 GHz 6 dBi MIMO Patch Antenna is ideal for high density venues such as lecture halls, stadiums, and convention centers that require 2.4/5 GHz frequency operation. It features a four-connector structure and has a low-profile design with high gain. It supports 802.11a/b/g/n and MIMO. The antenna can be pole/mast mounted and includes a universal articulating mount.

Specifications

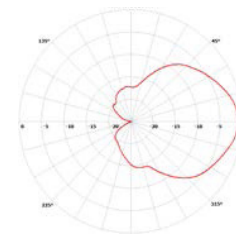
SKU	515086
Manufacturer Part Number	M6060060P23602NB
Operating Frequency Range	2.4/5 GHz
Polarization	Vertical
Horizontal Beamwidth	55° ± 10°/35° ± 10°
Vertical Beamwidth	55° ± 10°/35° ± 10°
Gain	6 dBi
VSWR	≤ 2 / ≤ 2.5
Max Input Power	20 W
Nominal Impedance	50 Ohms
Bandwidth	100/700 MHz
Number of Ports	4
Length of Lead	36 in.
RF Connector	RPTNC Male
Application	Indoor/Outdoor
Dimensions	10.3 x 10.3 x 1.4 in.
Weight	2.31 lbs.
Mounting Options	Mast or Pole



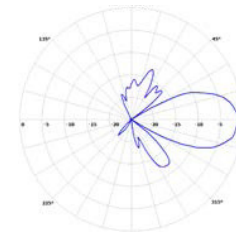
Radiation Patterns



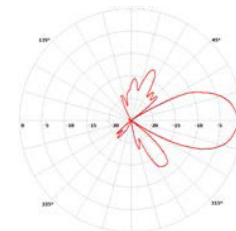
2.4 GHz
E Plane



2.4 GHz
H Plane



5 GHz
E Plane



5 GHz
H Plane

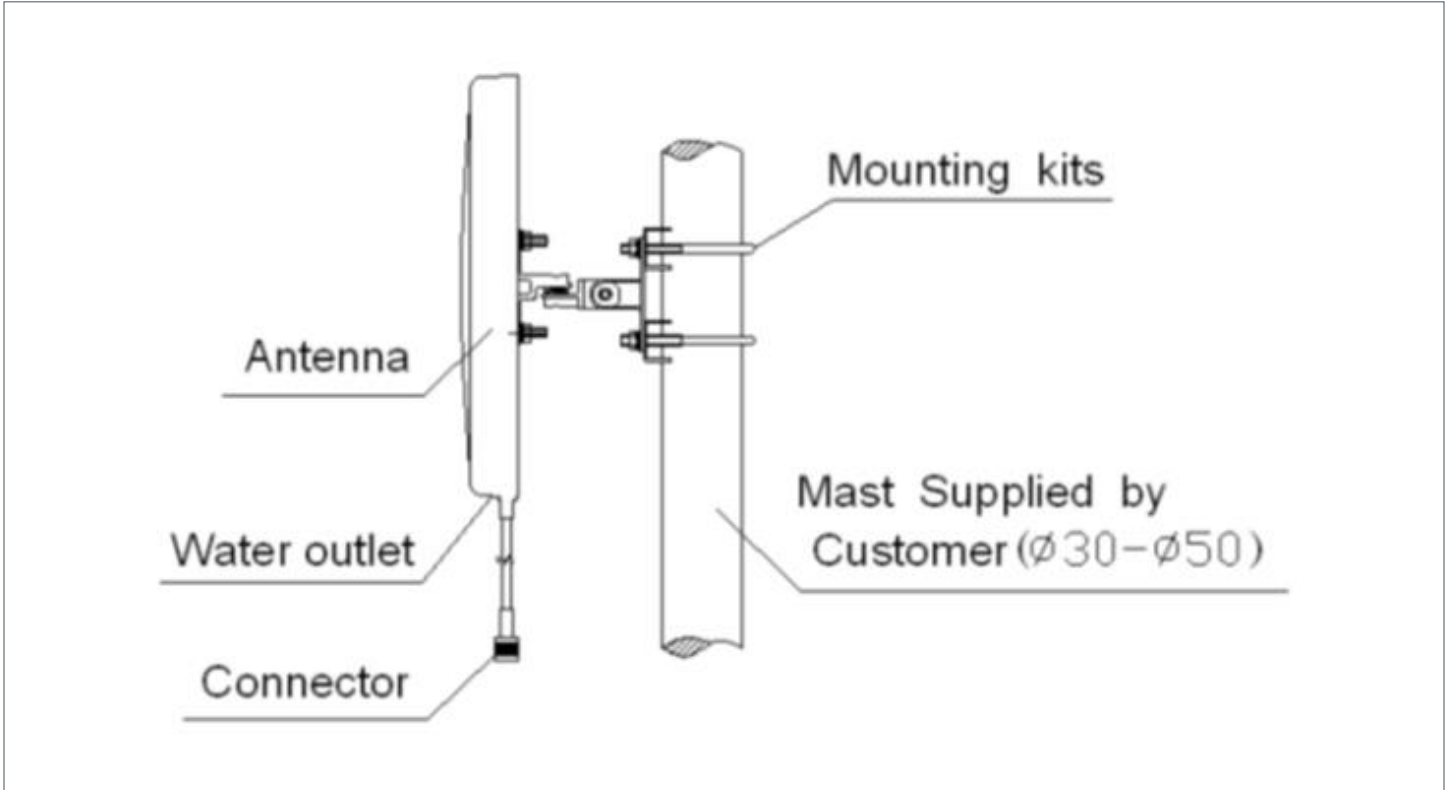


All product specifications are subject to change without notice or obligation.

TerraWave® 2.4/5 GHz 6 dBi Wi-Fi MIMO Patch Antenna

with 4 RPTNC Male Connectors

Antenna & Mount Information



All product specifications are subject to change without notice or obligation.