

# 2.4/5 GHz 6 dBi Wi-Fi Patch Antenna

with 4 RPSMA Male Connectors

ventev®

Connect, Protect, and Enable™

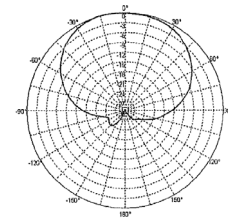
Ventev's 2.4/5 GHz 6 dBi Quad Patch Antenna is designed to be operated with any manufacturer's enterprise-class 802.11n MIMO access points. The antenna comes with four RPSMA Plug connectors and 36" cables. With dual-band leads, each cable supports both 2.4 and 5 GHz, making it an ideal and aesthetically pleasing antenna to support demanding outdoor applications in next-generation IEEE 802.11n wireless communication systems.

## Specifications

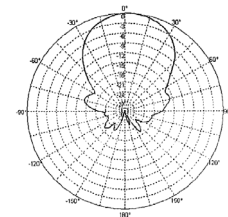
SKU	527504
Manufacturer Part Number	M6060060MP1D43620
Operating Frequency Range	2.4/5 GHz
Gain	6 dBi
Polarization	Vertical
Vertical Beamwidth	80° ± 20° / 45° ± 20°
Horizontal Beamwidth	80° ± 20° / 45° ± 20°
VSWR	≤ 2.0 / ≤ 2.5
Nominal Impedance	50 Ohms
Max Input Power	100 W
Number of Ports	4
Length of Lead	36 in
RF Connector	RPSMA Male
Environment	Indoor/Outdoor
Operating Temperature	-40° to 140° F
Dimensions	9.2 x 9.0 x 1.1 in
Weight	2.65 lbs.
Mounting Style	Wall or Mast/Pole
Front to Back Ratio	≥ 18



## Radiation Patterns



2.4 GHz



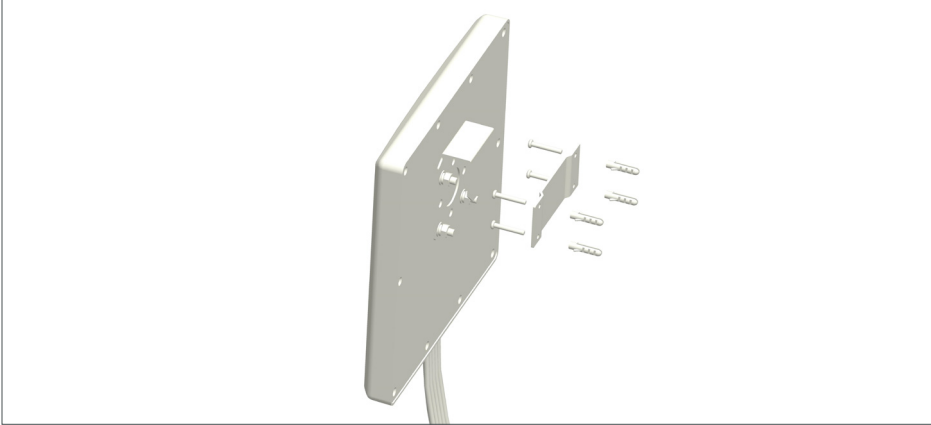
5 GHz



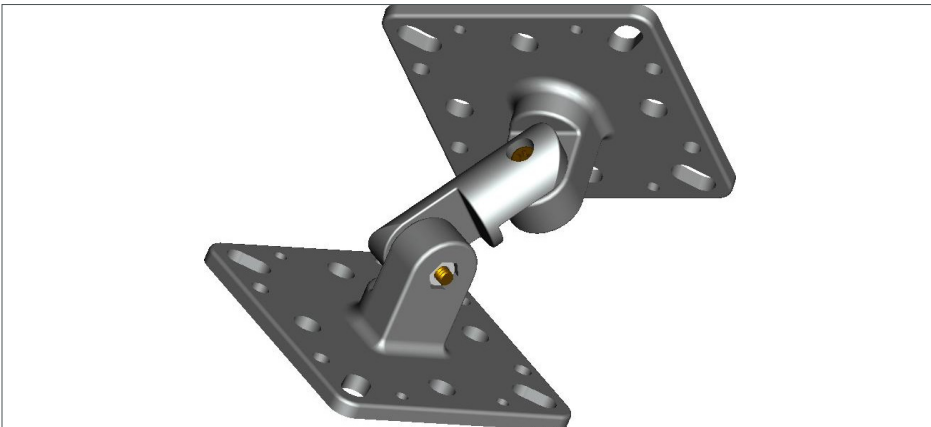
# 2.4/5 GHz 6 dBi Wi-Fi Patch Antenna

with 4 RPSMA Male Connectors

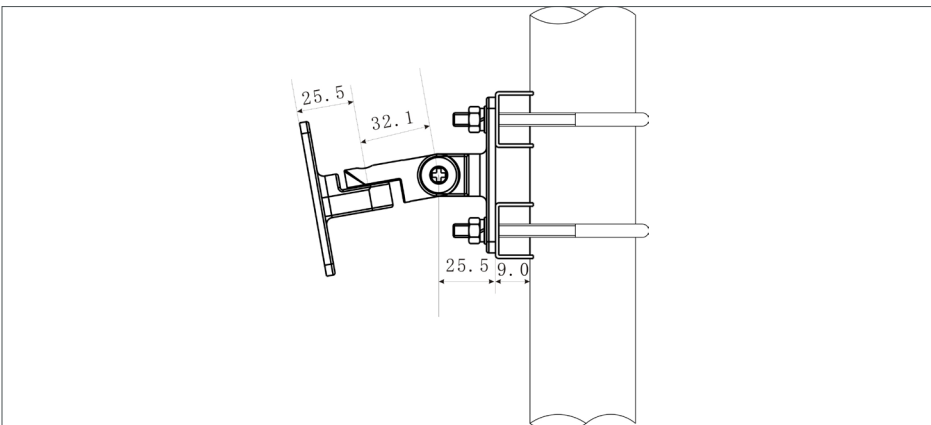
## Mount Information



**Image Title:** Wall Mount with screws



**Image Title:** Articulating Mount



**Image Title:** Mast Mount with Articulating Mount  
**Note:** Articulating Mount can also be wall mounted



# 2.4/5 GHz 6 dBi Wi-Fi Patch Antenna

with 4 RPSMA Male Connectors

## Mount Information

