

2.4/5 GHz 6 dBi Wi-Fi Omni Antenna

with 4 RPSMA Male Connectors

ventev®

Connect, Protect, and Enable™

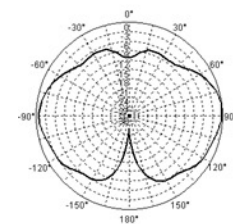
Ventev's 6 dBi outdoor multiple-input and multiple-output (MIMO) omnidirectional antenna is designed to operate enterprise class 802.11n MIMO access points (APs). With dual-band leads, each of the four cables support both 2.4 and 5 GHz, making it an ideal and aesthetically pleasing antenna to support demanding outdoor applications in next generation IEEE 802.11n wireless communication systems. The rugged enclosure makes this antenna perfectly suited for use in a warehouse or manufacturing environment where it must withstand exposure to moisture and dust. Includes an L-Bracket for mast and or wall mounting. Industrial beam clamps are available as an additional option.

Specifications

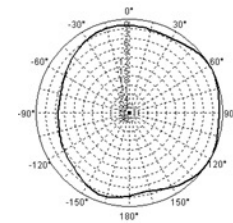
SKU	575525
Manufacturer Part Number	M6060060MO1D43620
Operating Frequency Range	2.4/5 GHz
Gain	6 dBi
Polarization	Vertical
Vertical Beamwidth	45°/20°
Horizontal Beamwidth	360°
VSWR	$\leq 2.0 / \leq 2.2$
Nominal Impedance	50 Ohms
Max Input Power	10 W
Number of Ports	4
Length of Lead	36 in.
RF Connector	RPSMA Male
Operating Temperature	-40° to 158°F
Dimensions	5.9 x 7 in.
Weight	2.64 lbs.
Wind Load	134 mph



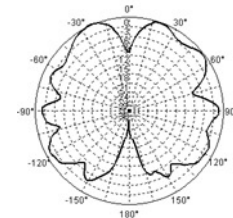
Radiation Patterns



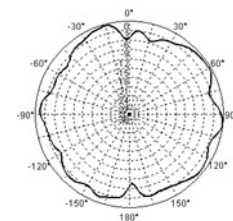
2.4 GHz
E Plane



2.4 GHz
H Plane



5 GHz
E Plane



5 GHz
H Plane

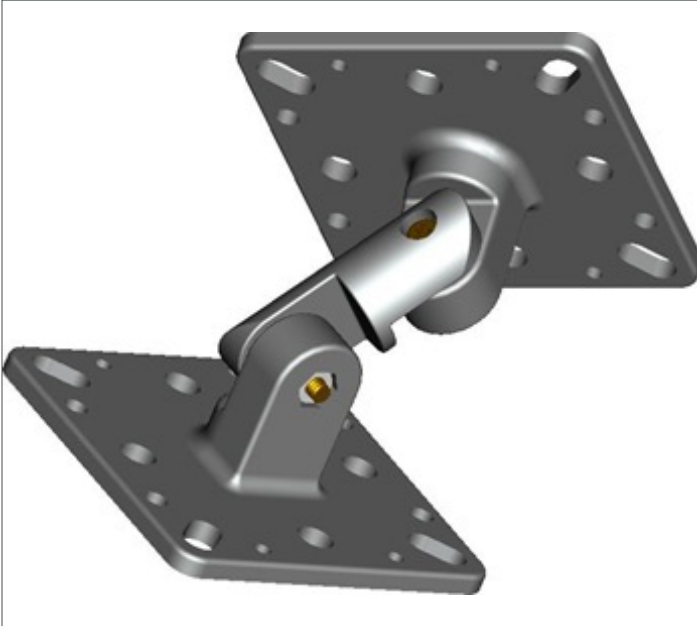


All product specifications are subject to change without notice or obligation.

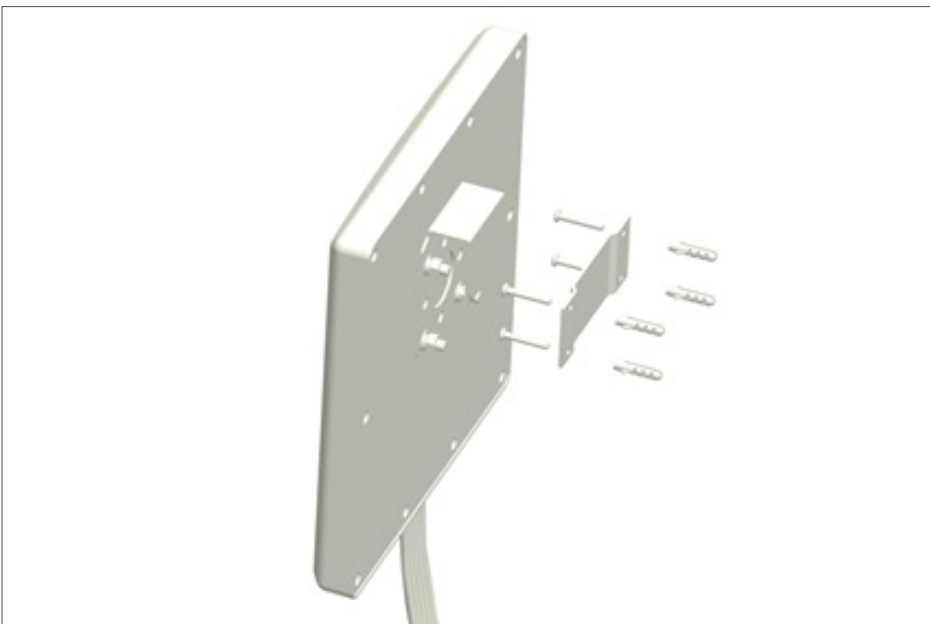
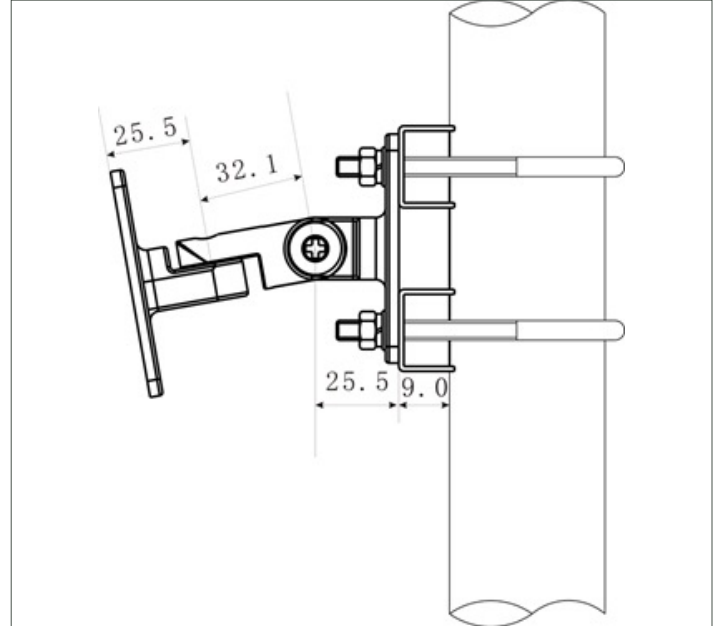
2.4/5 GHz 6 dBi Wi-Fi Omni Antenna

with 4 RPSMA Male Connectors

Mount Information



*Mast Mount with Articulating Mount**



Wall Mount with Screws

**NOTE: Articulating Mount can also be wall mounted.*



*All product specifications are
subject to change without notice
or obligation.*