

2.4/5/6 GHz 6dBi Wi-Fi 6 Femto Patch Antenna

with 4 N Male Connectors and Articulating Mount

ventev®

Connect, Protect, and Enable™

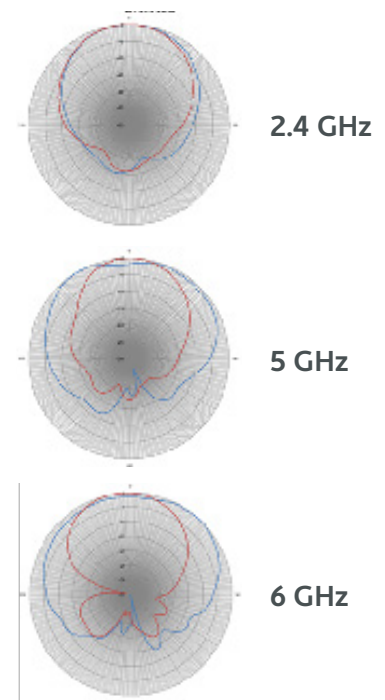
Ventev's small form factor Femto Patch Antenna with 4 N Male Connectors offers outstanding Wi-Fi 6 performance in Ventev's smallest form factor antenna to date! Measuring just 3.4 x 3.4 in. the antenna is one-third of the size of comparable antennas on the market, making it ideal for applications where performance and aesthetics are equally important. The antenna includes a Medium Strength Articulating Mount that articulates horizontally and vertically for precise positioning. Both the antenna and the mount are designed for use indoors or outdoors.

Specifications

| | |
|---------------------------|----------------------------|
| SKU | 607904 |
| Manufacturer Part Number | M6060060D4D3607FP |
| Operating Frequency Range | 2.4/5/6 GHz |
| Gain | 6 dBi |
| Polarization | 2x Horizontal, 2x Vertical |
| Vertical Beamwidth | 80°/50° |
| Horizontal Beamwidth | 80°/120° |
| VSWR | ≤ 2 |
| Nominal Impedance | 50 Ohms |
| Max Input Power | 50 W |
| Number of Ports | 4 |
| Length of Lead | 36 in. |
| RF Connector | N Male |
| Application | IP54 |
| Operating Temperature | -40° to 158°F |
| Dimensions | 3.4 x 3.4 x 1.4 in. |
| Weight | 1 lb. |
| Bandwidth | 100 MHz 1000 MHz |
| Front-to-Back Ratio | 10 dBi / 15 dBi |
| Isolation | ≥ 10 / ≥ 22 |
| Mounting Options | Ceiling, Mast, or Wall |
| Color | White |
| Construction | UV-Resistant ABS |



Radiation Patterns

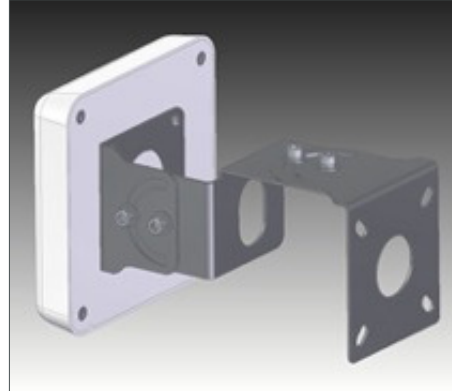
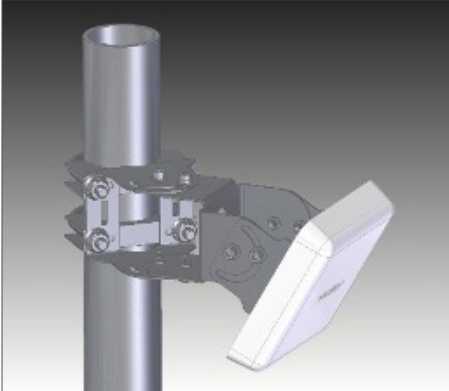


All product specifications are subject to change without notice or obligation.

5.9-7.125GHz 6dBi Wi-Fi 6 Femto Patch Antenna

with 4 N Male Connectors and Articulating Mount

Mount Information



Mount Specifications

| | |
|-----------------------------|-------------------|
| Model | TW-ART-MOUNT-MS |
| Dimensions | 6 x 3 x 3 in. |
| Weight | 0.5 lbs. |
| Material | Zinc-Plated Steel |
| Operating Temperature Range | -40° to 158°F |
| Mounting Options | Pole or Wall |
| Mast Diameter | 2.125 to 2.5 in. |
| Maximum Load | 25 lbs.* |
| Wind Speed Range | ≤ 100 |

*NOTE: Max load is a combination of antenna weight and wind strength.



All product specifications are subject to change without notice or obligation.