

2.4/5/6 GHz 6 dBi Wi-Fi Directional Antenna

with 4 RPTNC Male Connectors

ventev®

Connect, Protect, and Enable™

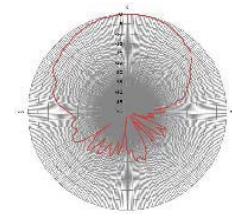
Ventev's 2.4/5/6 GHz 6 dBi High Density directional Wi-Fi antenna is designed to operate with the latest access points. The antenna's gain and directional beam delivers on the modern user demand for high capacity connectivity. Four tri-band leads deliver exceptional performance while simplifying connection to the access point. An articulating mount enables the antenna to be pointed precisely where coverage is most needed, and comes with mounting hardware to support mast and/or wall mounting.

Specifications

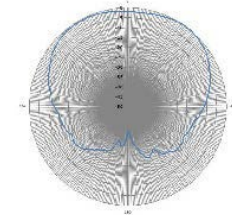
SKU	607919
Manufacturer Part Number	M7060060P1D43602E
Operating Frequency Range	2.4/5/6 GHz
Gain	6 dBi
Polarization	Vertical
Vertical Beamwidth	60°/70°/70°
Horizontal Beamwidth	105°/120°/120°
VSWR	≤ 2.0
Nominal Impedance	50 Ohms
Max Input Power	20 W
Number of Ports	4
Length of Lead	36 in.
RF Connector	RPTNC Male
Application	Indoor/Outdoor
Operating Temperature	-40° to 158°F
Dimensions	10 x 5.6 x 1.4 in.
Weight	1.2 lbs.



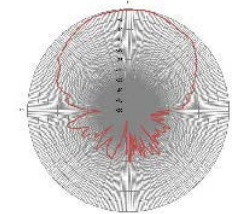
Radiation Patterns



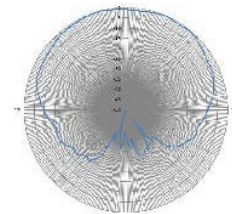
2.4 GHz
E Plane



2.4 GHz
H Plane



5/6 GHz
E Plane



5/6 GHz
H Plane

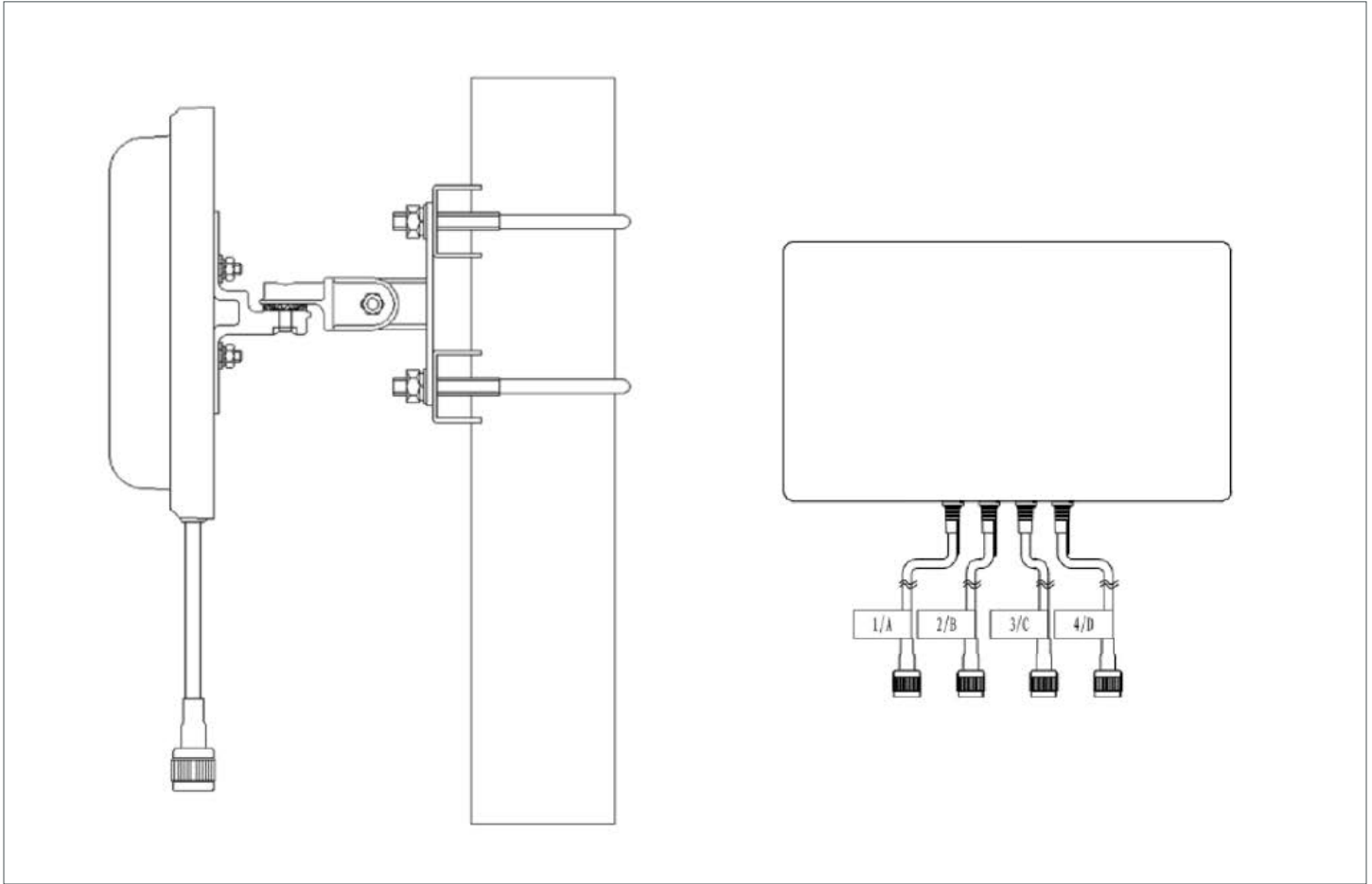


All product specifications are subject to change without notice or obligation.

2.4/5/6 GHz 6 dBi Wi-Fi Directional Antenna

with 4 RPTNC Male Connectors

Mount Information



Installation Instructions

- Place the bracket on the back of the panel antenna. Attach the antenna to the mast.
- Use the client to test and adjust the receive signal strength (RSSI) and adjust the azimuth and elevation to maximize the RSSI. Tighten each nut and seal the antenna connector.



All product specifications are subject to change without notice or obligation.