

TerraWave® 2400-2500/4900-7125 MHz

6/6 dBi Omni

Ventev's TerraWave® 2.4/5/6 GHz 6 dBi Wi-Fi Small Form Factor Omnidirectional antenna's small size and clean appearance, combined with excellent performance, make it ideal for deployments where space is limited, or visual appeal is important. The 4 tri-band leads support 802.11ax radio chains and enable spatial multiplexing. An L-bracket with mounting hardware is included to support mast and/or wall mounting.

Specifications

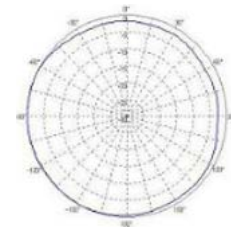
SKU	610693
Manufacturer Part Number	M706006001D43607
Number of Ports	4
Length of Lead	36 in.
RF Connector	N-Male
Application	Omni
Operating Temperature	-40° to 60°F
Dimensions	3.6 diameter x 5.8 in. long
Weight	3.1 lbs.
Mounting Options	Wall or Pole
Radome	White ABS

Electrical Specifications

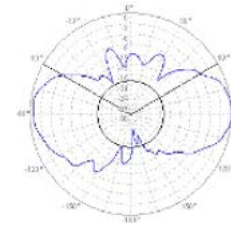
Operating Frequency Range	2400-2500 MHz	4900-6000 MHz	5850-7125 Mhz
Polarization	Vertical		
Vertical Beamwidth	45°	20°	20°
Isolation	≥ 20 / ≥ 23 dB		
Gain	6 dBi		
VSWR	≤ 2.0		
Max Input Power	50 W		
Nominal Impedance	50 Ohms		



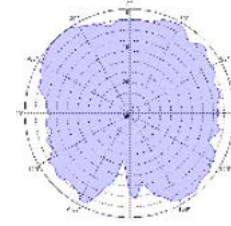
Radiation Patterns



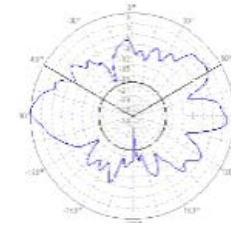
2400-2500 MHz



2400-2500 MHz



4900-7125 MHz



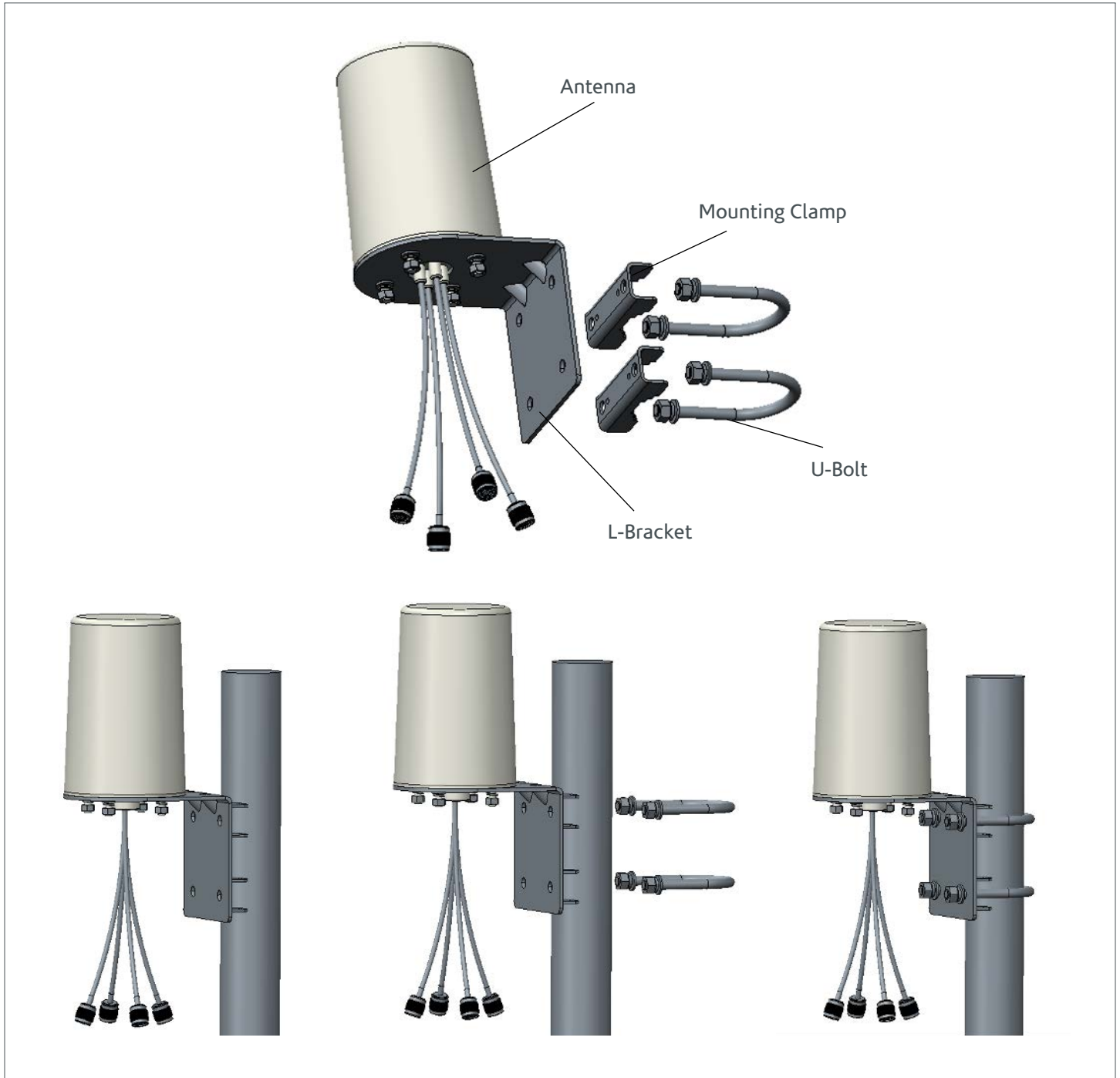
4900-7125 MHz



All product specifications are subject to change without notice or obligation.

TerraWave® 2400-2500/4900-7125 MHz 6/6 dBi Omni

Antenna & Mount Information



All product specifications are subject to change without notice or obligation.